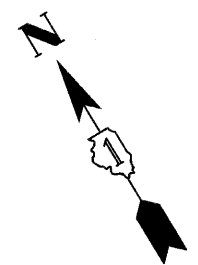
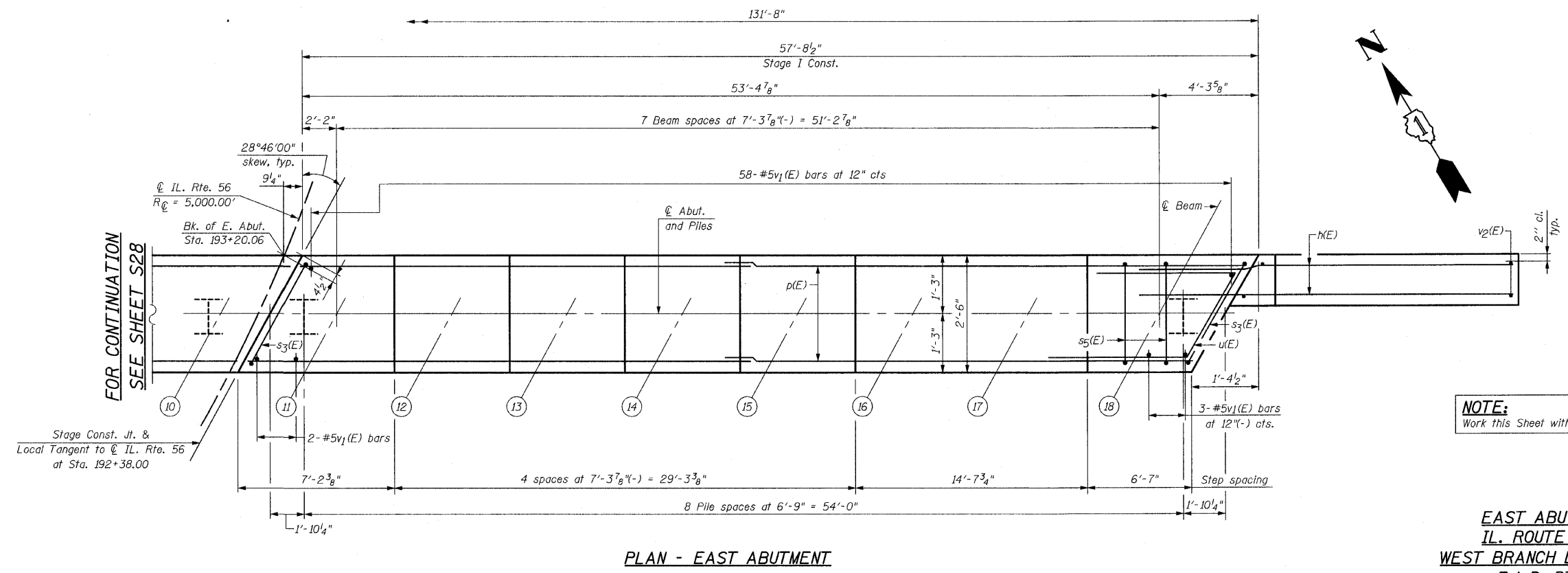
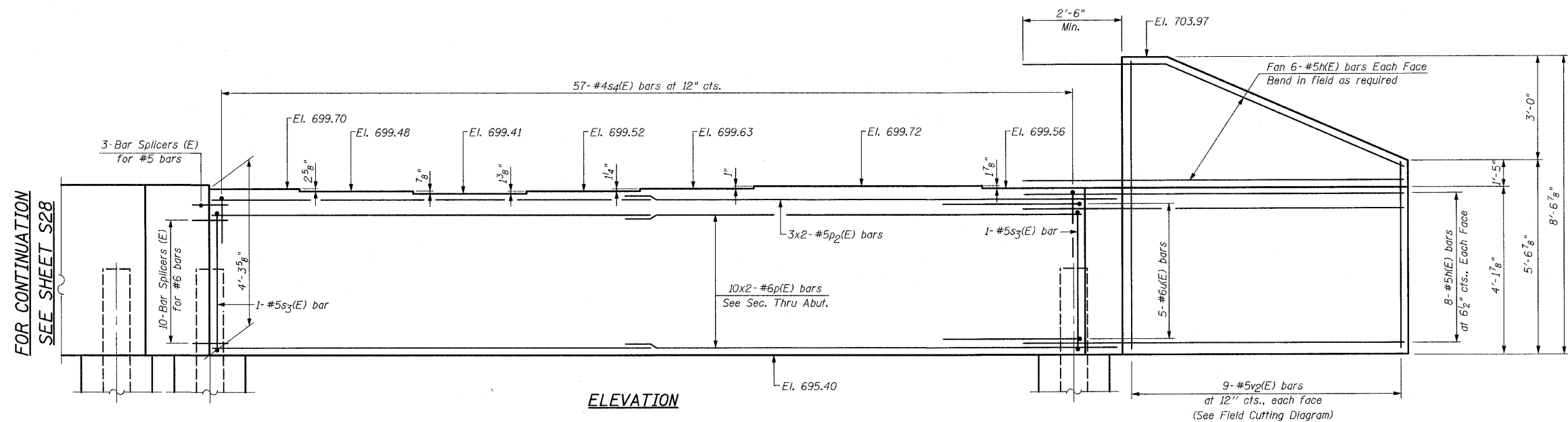


STATE OF ILLINOIS
DEPARTMENT OF TRANSPORTATION



FOR CONTINUATION
SEE SHEET S28

FOR CONTINUATION
SEE SHEET S28

NOTE:
Work this Sheet with Sht. S28

NOTE:
See Sht. S28 for Sec. Thru Abut., Field Cutting Diagram,
Bill of Material and Pile Data.

**EAST ABUTMENT-II
IL. ROUTE 56 OVER
WEST BRANCH DuPAGE RIVER
F.A.P. RTE. 365
SECTION (58&59) WRS-3
DuPAGE COUNTY
STA. 192+38.00
STRUCTURE NO. 022-2027**

DESIGNED -
CHECKED -
DRAWN -
CHECKED -

CR & A
CHRISTIAN-ROGE & ASSOCIATES, INC.
ENGINEERS-PLANNERS-SURVEYORS
211 WEST WACKER DRIVE
CHICAGO, ILLINOIS 60606
PHONE: (312)372-2023 FAX: (312)372-5274

SHEET NO. S29 S43 SHEETS	F.A. RTE.	SECTION	COUNTY	TOTAL SHEETS	SHEET NO.
	365	(58&59) WRS-3	DUPAGE	466	235
			CONTRACT NO. 62420		
ILLINOIS FED. AID PROJECT					