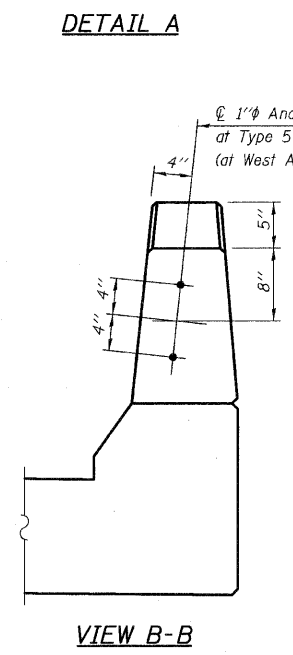
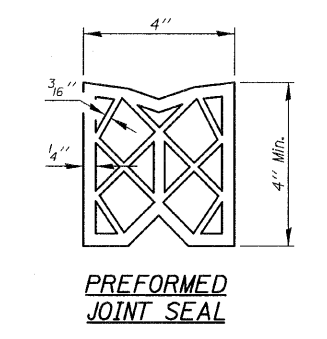
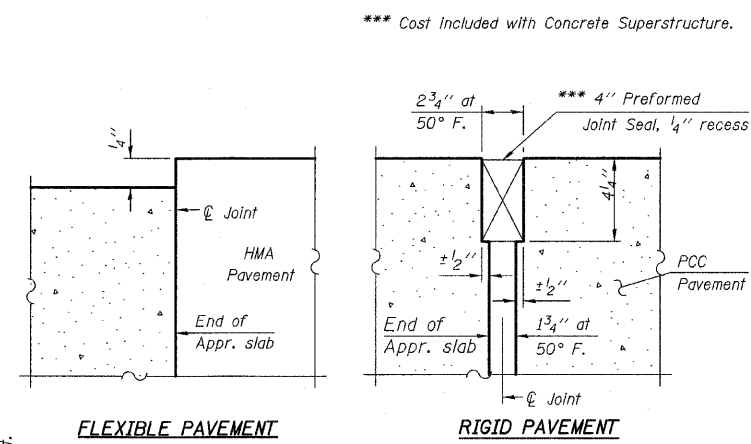
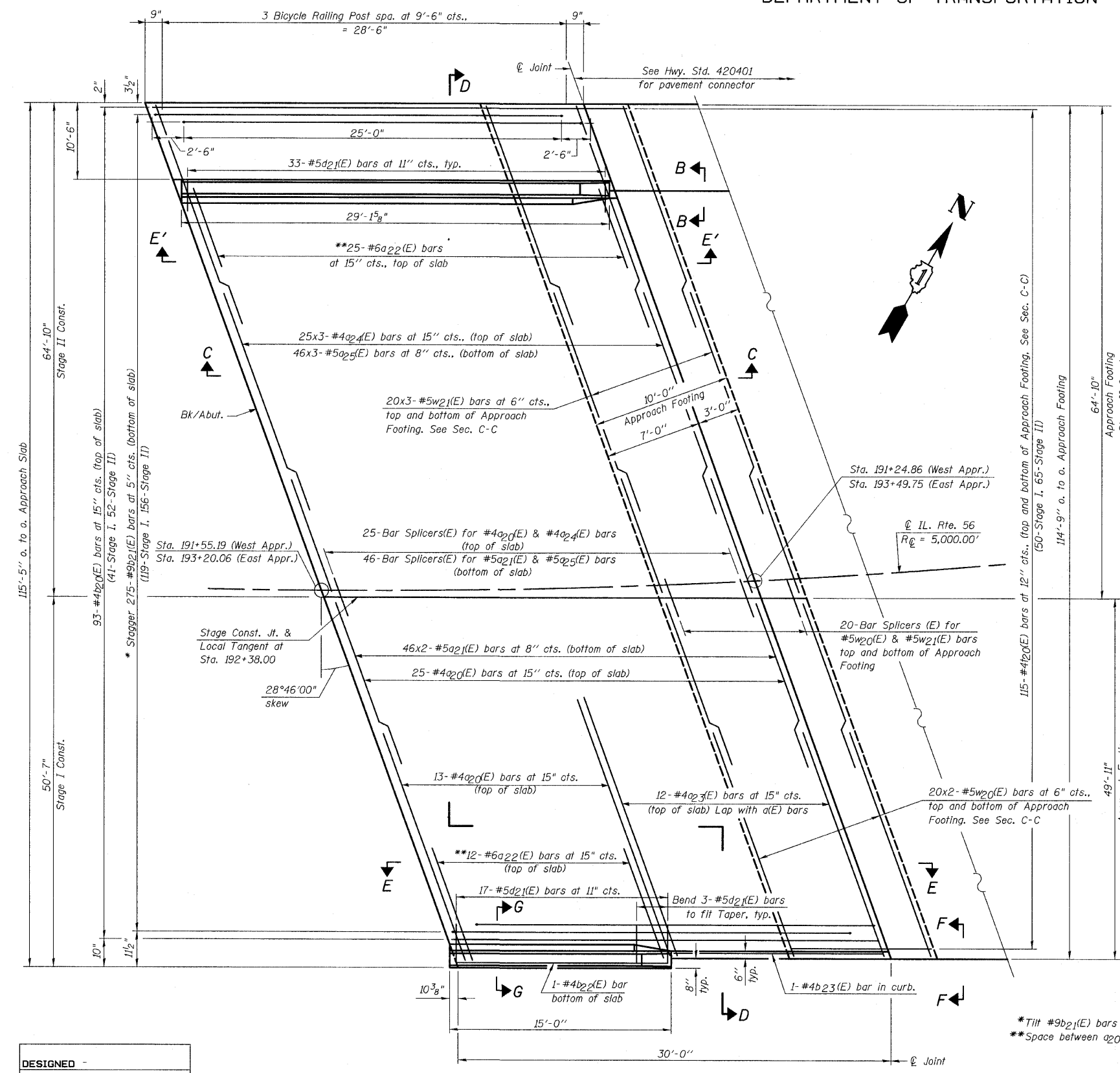


STATE OF ILLINOIS
DEPARTMENT OF TRANSPORTATION

Notes:
See Sht. S33 for Sections C-C, D-D & G-G and Views E-E & E'-E'.
a₂(E) thru a₂(E) bar spacings measured along Local Tangent.



MIN. BAR LAP:
#4 bar = 1'-10"
#5 bar = 2'-6"

*Tilt #9b21(E) bars as required to maintain clearance.
**Space between a2(E) or a24(E) bars, typ. each parapet.

(Sheet 1 of 3)

DESIGNED	-
CHECKED	-
DRAWN	-
CHECKED	-

PLAN
(East Approach Slab shown)
(West Approach Slab opp. hand)

APPROACH SLAB DETAILS-I
IL. ROUTE 56 OVER
WEST BRANCH DuPAGE RIVER
F.A.P. RTE. 365
SECTION (58&59) WRS-3
DuPAGE COUNTY
STA. 192+38.00
STRUCTURE NO. 022-2027

CHRISTIAN-ROGE & ASSOCIATES, INC.
ENGINEERS-PLANNERS-SURVEYORS
211 WEST WACKER DRIVE
CHICAGO, ILLINOIS 60606
PHONE: (312)372-2923 FAX: (312)372-5274

SHEET NO. S31	F.A. RTE. 365	SECTION (58&59) WRS-3	COUNTY DuPAGE	TOTAL SHEETS 466	SHEET NO. 237
S43 SHEETS	CONTRACT NO. 62420			ILLINOIS FED. AID PROJECT	