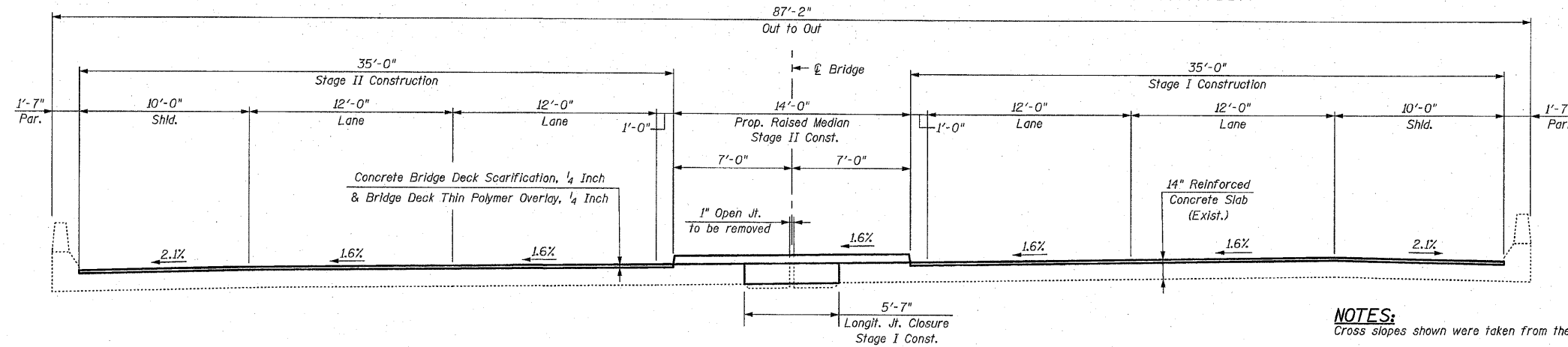
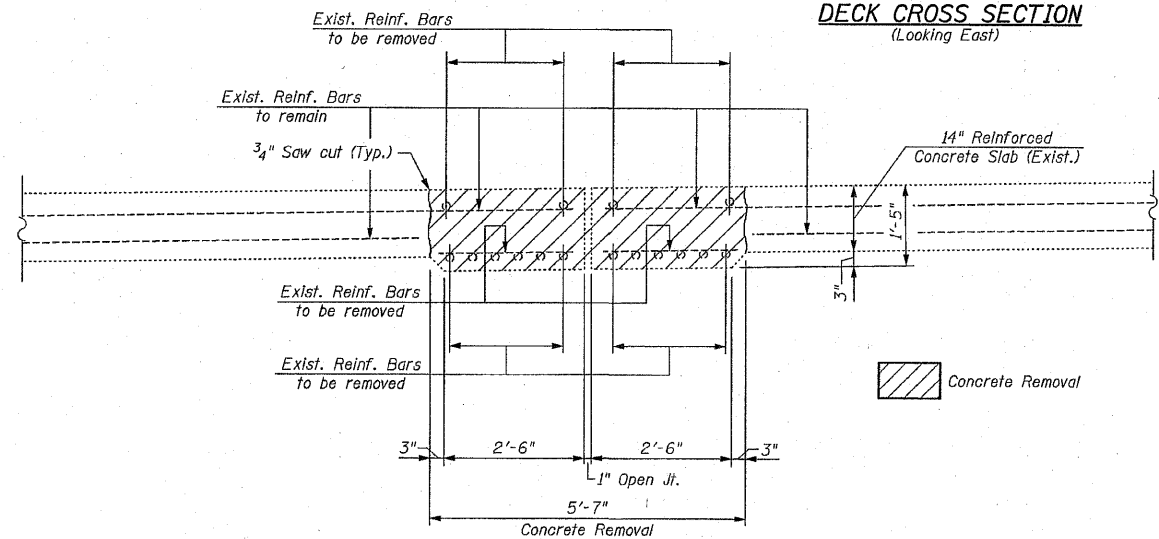


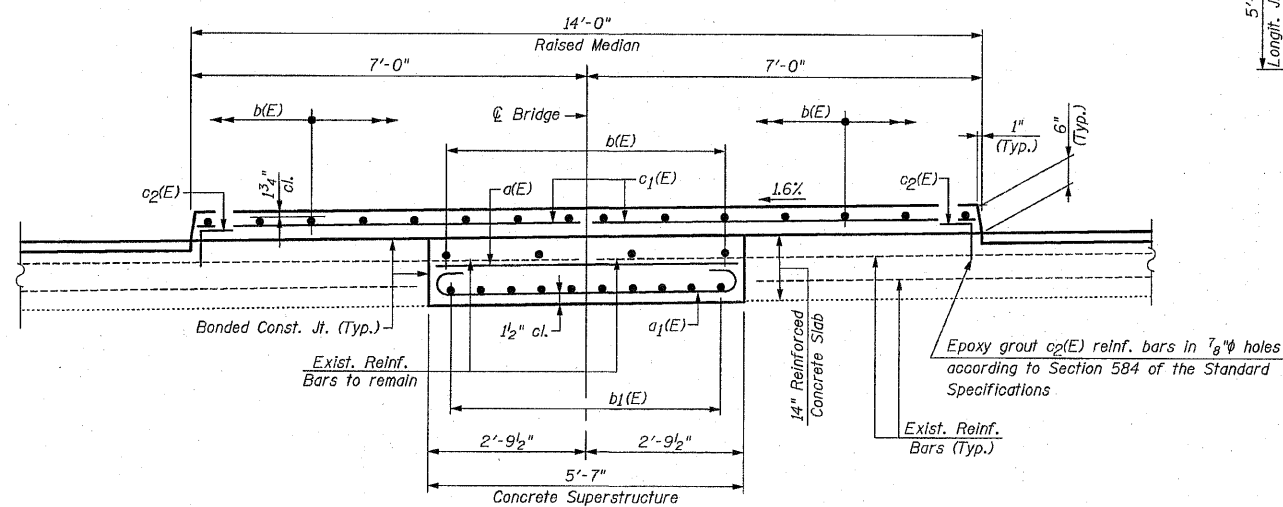
STATE OF ILLINOIS  
DEPARTMENT OF TRANSPORTATION



**DECK CROSS SECTION**  
(Looking East)

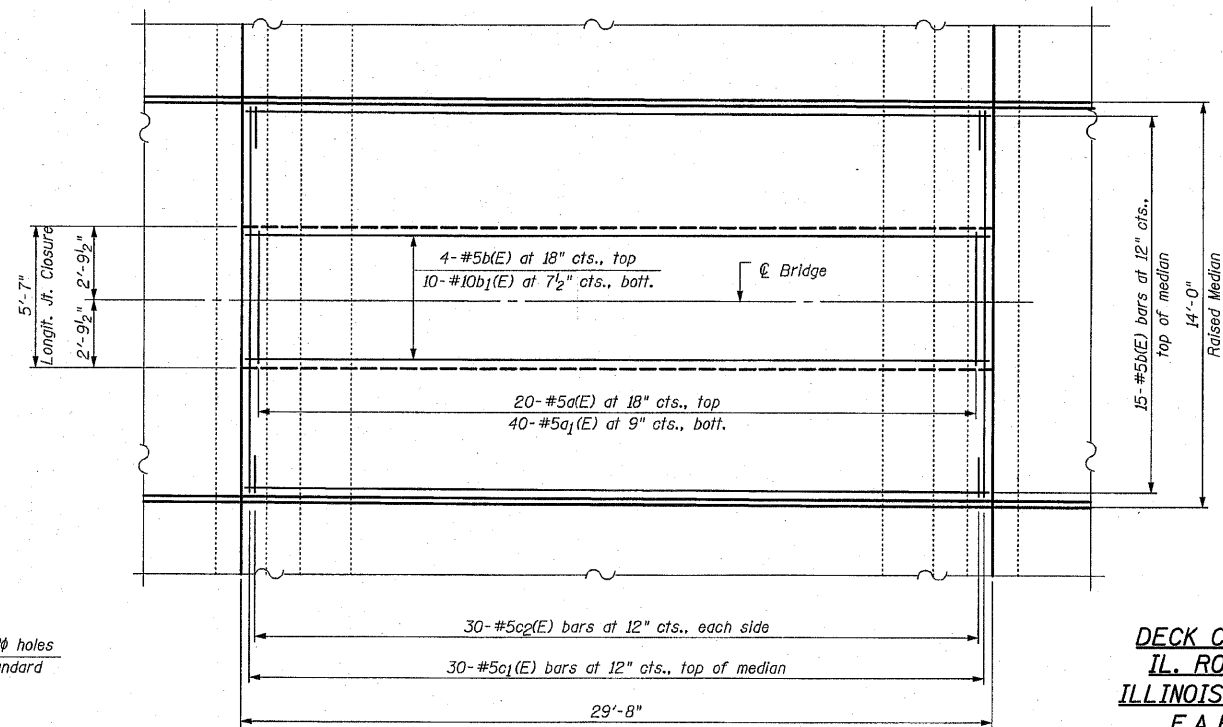
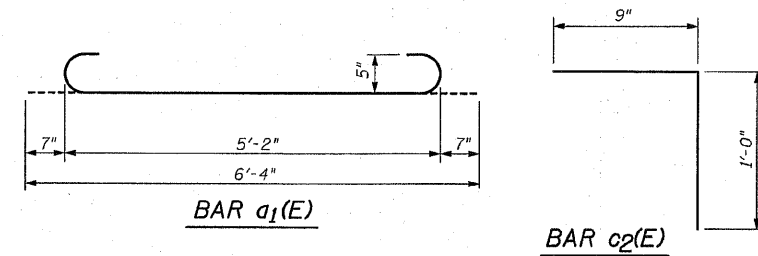


**EXISTING SECTION A-A**



**PROPOSED SECTION A-A**

**NOTES:**  
Cross slopes shown were taken from the existing plans.  
The proposed overlay cross slopes shall match existing cross slopes.



**PROPOSED MEDIAN PLAN & LONGITUDINAL JOINT CLOSURE**

BILL OF MATERIAL				
Bar	No.	Size	Length	Shape
a1(E)	20	#5	5'-2"	—
a1(E)	40	#5	6'-4"	U
b(E)	19	#5	29'-4"	—
b1(E)	10	#10	29'-4"	—
c1(E)	30	#5	13'-6"	—
c2(E)	60	#5	1'-9"	7
Concrete Superstructure		Cu. Yd.	15.0	
Reinforcement Bars, Epoxy Coated		Pound	2,750	
Concrete Bridge Deck Scarification, 1/4 Inch		Sq. Yd.	231	
Bridge Deck Thin Polymer Overlay, 1/4 Inch		Sq. Yd.	231	
Concrete Removal		Cu. Yd.	8.6	

DESIGNED -	200
CHECKED -	EXAMINED
DRAWN -	PASSED
CHECKED -	ENGINEER OF BRIDGE DESIGN
	ENGINEER OF BRIDGES AND STRUCTURES

CHRISTIAN-ROGE & ASSOCIATES, INC.  
ENGINEERS-PLANNERS-SURVEYORS  
211 WEST WACKER DRIVE  
CHICAGO, ILLINOIS 60606  
PHONE: (312)372-2023 FAX: (312)372-5274

SHEET NO. S2	F.A. RTE.	SECTION	COUNTY	TOTAL SHEETS	SHEET NO.
S6 SHEETS	365	(58&59) WRS-3	DUPAGE	466	251
			CONTRACT NO. 62420		
ILLINOIS FED. AID PROJECT					

**DECK CROSS SECTION  
IL. ROUTE 56 OVER  
ILLINOIS PRAIRIE PATH  
F.A.P. RTE. 365  
SECTION (58&59) WRS-3  
DuPAGE COUNTY  
STA. 248+03.00  
STRUCTURE NO. 022-0151**