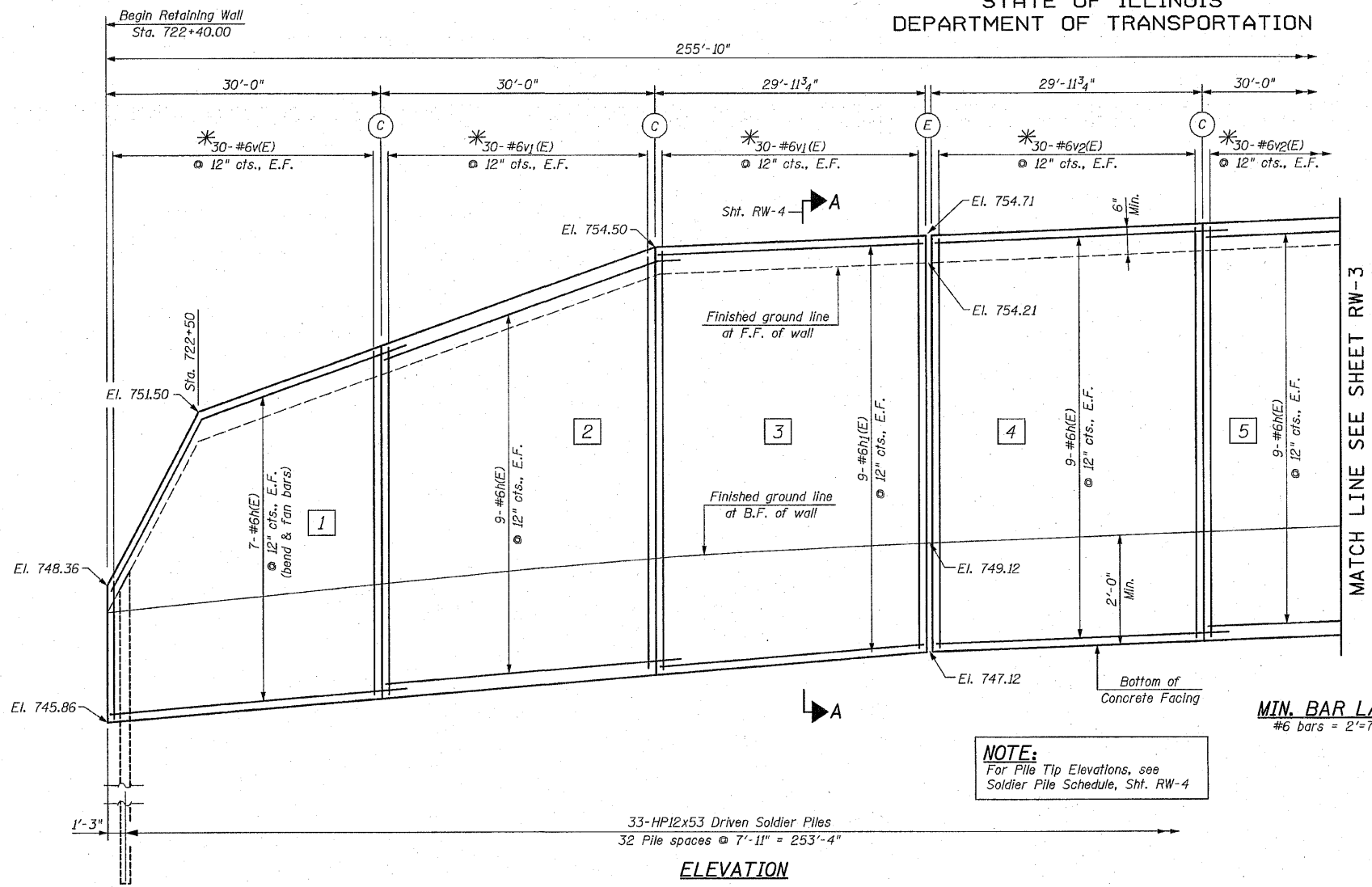
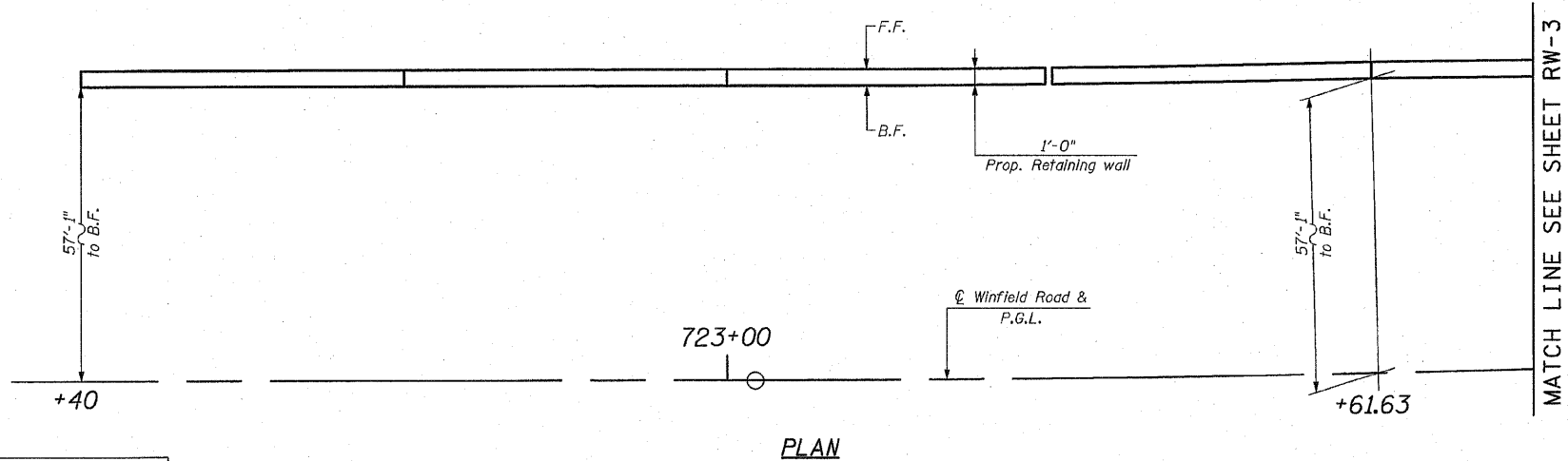


STATE OF ILLINOIS  
DEPARTMENT OF TRANSPORTATION



ELEVATION



PLAN

- GENERAL NOTES:**
- Plan dimensions and details relative to existing plans are subject to nominal construction variations. The Contractor shall field verify existing dimensions and details affecting new construction and make necessary approved adjustments prior to construction or ordering of materials. Such variations shall not be cause for additional compensation for a change in the scope of work, however, the Contractor will be paid for the quantity actually furnished at the unit price bid for the work.
  - The Contractor is responsible for the design and performance of the lagging using no less than a 3 in. nominal rough-sawn thickness and timber with a minimum allowable bending stress of 1000 psi.
  - Pipe Underdrain Outlet Pipes shall drain into concrete headwalls. See Article 601.05 of the Standard Specifications and see Highway Standard 601101.
  - Reinforcement Bars shall conform to the requirements of ASTM A 706, Gr. 60. See Special Provisions.
  - All Exposed Concrete edges shall be chamfered 3/4" unless otherwise noted.
  - Reinforcement Bars designated (E) shall be Epoxy Coated.

**TOTAL BILL OF MATERIAL**

DESCRIPTION	UNIT	QUANTITY
Concrete Structures	Cu. Yd.	62.8
Pipe Underdrains for Structures 4"	Foot	266
Stud Shear Connectors	Each	836
Furnishing Soldier Piles (HP Section)	Foot	760
Driving Soldier Piles	Foot	760
Reinforcement Bars, Epoxy Coated	Pound	11,800
Structure Excavation	Cu. Yd.	250
Untreated Timber Lagging	Sq. Ft.	1,200
Geocomposite Wall Drain	Sq. Yd.	90

\* Cut in field to fit

**LEGEND:**

- E.F. = Each Face
- F.F. = Front Face
- B.F. = Back Face
- (C) = Construction Joint
- (E) = Expansion Joint
- (1) = Panel Numbers
- (I) = Pile Numbers

**NOTE:**  
For Pile Tip Elevations, see  
Soldier Pile Schedule, Sht. RW-4

**MIN. BAR LAP:**  
#6 bars = 2'-7"

DESIGNED -	200
CHECKED -	EXAMINED
DRAWN -	PASSED
CHECKED -	ENGINEER OF BRIDGES AND STRUCTURES

**CHRISTIAN-ROGE & ASSOCIATES, INC.**  
ENGINEERS-PLANNERS-SURVEYORS  
211 WEST WACKER DRIVE  
CHICAGO, ILLINOIS 60606  
PHONE: (312)372-2023 FAX: (312)372-5274

SHEET NO. RW-2	F.A. RTE. 365	SECTION (58&59) WRS-3	COUNTY DuPAGE	TOTAL SHEETS 466	SHEET NO. 257
RW-5 SHEETS					CONTRACT NO. 62420
ILLINOIS FED. AID PROJECT					

**PLAN & ELEVATION-I**  
**IL. ROUTE 56**  
**SOLDIER PILE RETAINING WALL**  
**F.A.P. RTE. 365**  
**SECTION (58&59) WRS-3**  
**DuPAGE COUNTY**  
**STA. 722+40.00 TO STA. 725+00.00**  
**AT WINFIELD ROAD**