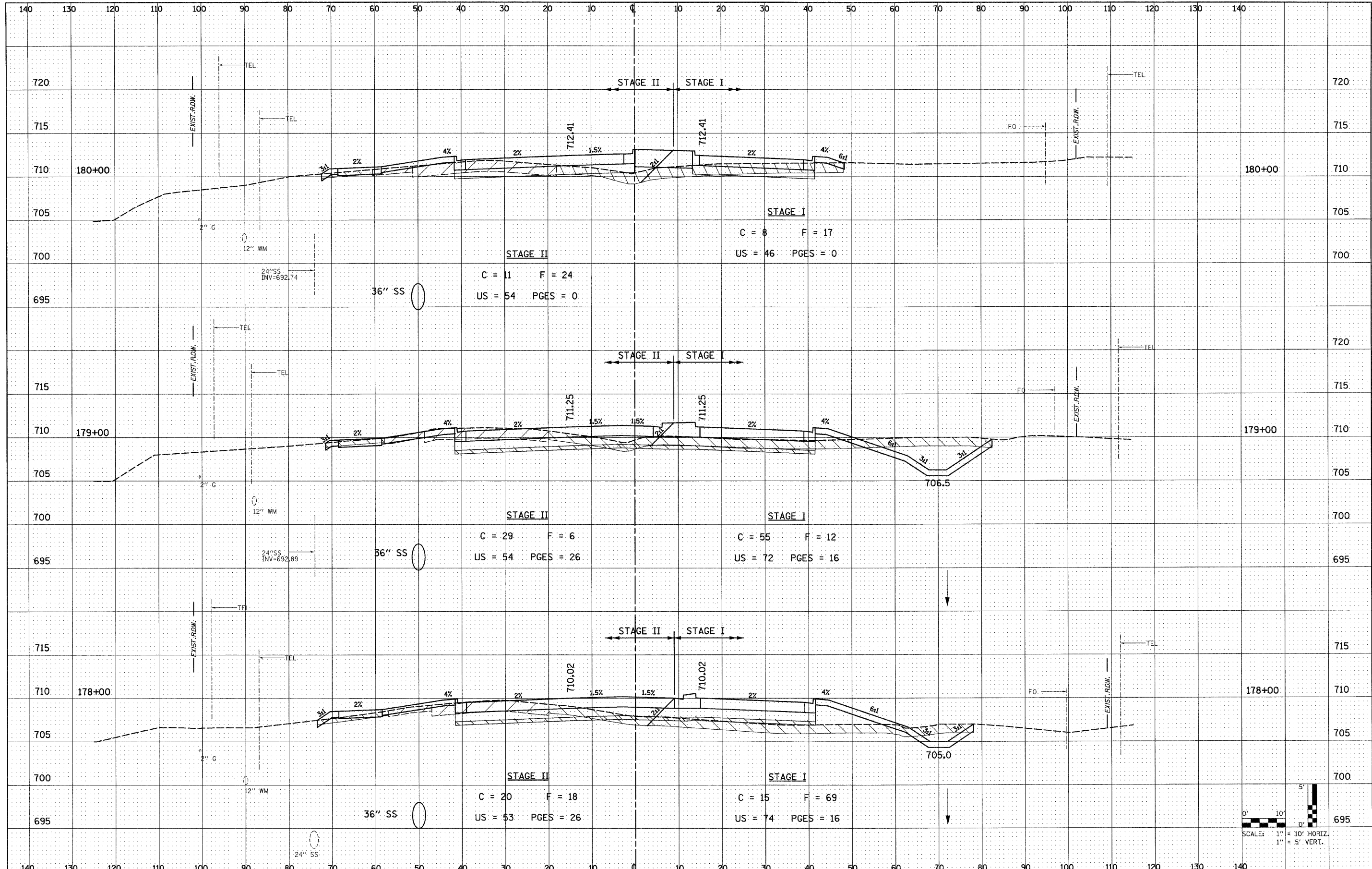


DATE	
BY	
FINAL SURVEY	
SURVEYED	
PLOTTED	
NOTE BOOK	
AREAS	
CHECKED	
NO.	

DATE	
BY	
ORIGINAL SURVEY	
SURVEYED	
PLOTTED	
NOTE BOOK	
AREAS	
CHECKED	
NO.	



FILE NAME = D:\62420-sht-xssht.dgn  
 PLOT DATE = 12/3/2010  
 PLOT SCALE = 100.000' / IN.

**CHRISTIAN-ROGE & ASSOCIATES, INC.**  
 ENGINEERS-PLANNERS-SURVEYORS  
 211 WEST WACKER DRIVE  
 CHICAGO, ILLINOIS 60606  
 PHONE: (312)372-2023 FAX: (312)372-5274

DESIGNED	- S.J.P.	REVISED	-
DRAWN	- W.A.M.	REVISED	-
CHECKED	- M.P.	REVISED	-
DATE	- DECEMBER 3, 2010	REVISED	-

**STATE OF ILLINOIS**  
**DEPARTMENT OF TRANSPORTATION**

**CROSS SECTIONS**  
**IL. RTE. 56**  
 SCALE: NONE SHEET NO. 39 OF 74 SHEETS STA. TO STA.

F.A.P. RTE.	SECTION	COUNTY	TOTAL SHEETS	SHEET NO.
365	(58&59) WRS-3	DUPAGE	466	376
FED. ROAD DIST. NO. 1				ILLINOIS FED. AID PROJECT
CONTRACT NO. 62420				

