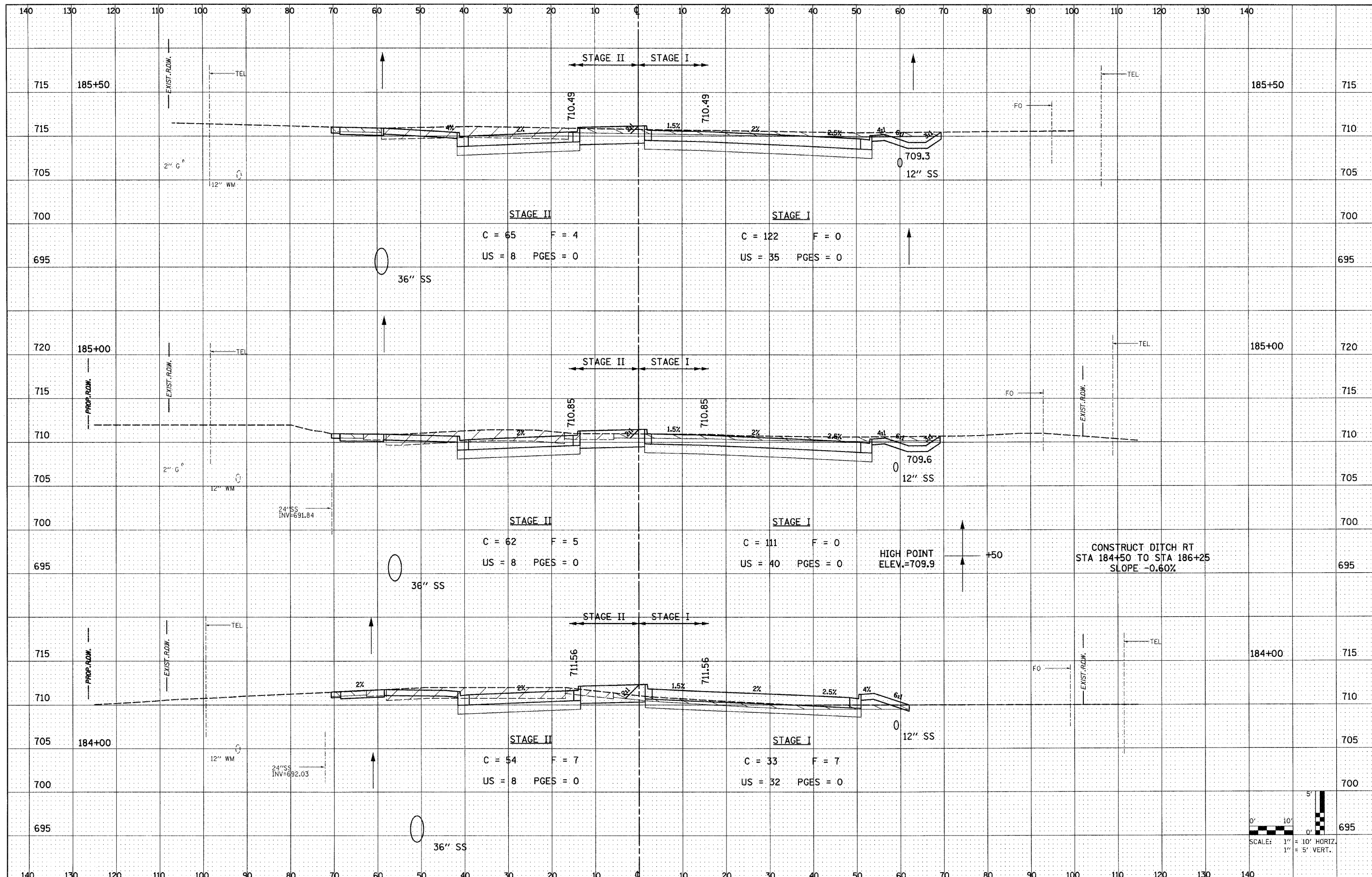


DATE	
BY	
FINAL SURVEY	
SURVEYED	
PLOTTED	
NOTE BOOK	
AREAS	
CHECKED	
NO.	

DATE	
BY	
ORIGINAL SURVEY	
SURVEYED	
PLOTTED	
NOTE BOOK	
AREAS	
CHECKED	
NO.	



FILE NAME = D162420-shr-xshd.dgn
 PLOT DATE = 12/3/2010
 PLOT SCALE = 1/8\"/>

CHRISTIAN-ROGE & ASSOCIATES, INC.
 ENGINEERS-PLANNERS-SURVEYORS
 211 WEST WACKER DRIVE
 CHICAGO, ILLINOIS 60606
 PHONE: (312)372-2023 FAX: (312)372-5274

DESIGNED	- S.J.P.	REVISED	-
DRAWN	- W.A.M.	REVISED	-
CHECKED	- M.P.	REVISED	-
DATE	- DECEMBER 3, 2010	REVISED	-

STATE OF ILLINOIS
DEPARTMENT OF TRANSPORTATION

CROSS SECTIONS
IL. RTE. 56

SCALE: NONE SHEET NO. 41 OF 74 SHEETS STA. TO STA.

F.A.P. RTE.	SECTION	COUNTY	TOTAL SHEETS	SHEET NO.
365	(58&59) WRS-3	DUPAGE	466	378
CONTRACT NO. 62420				
FED. ROAD DIST. NO. 1 ILLINOIS FED. AID PROJECT				

