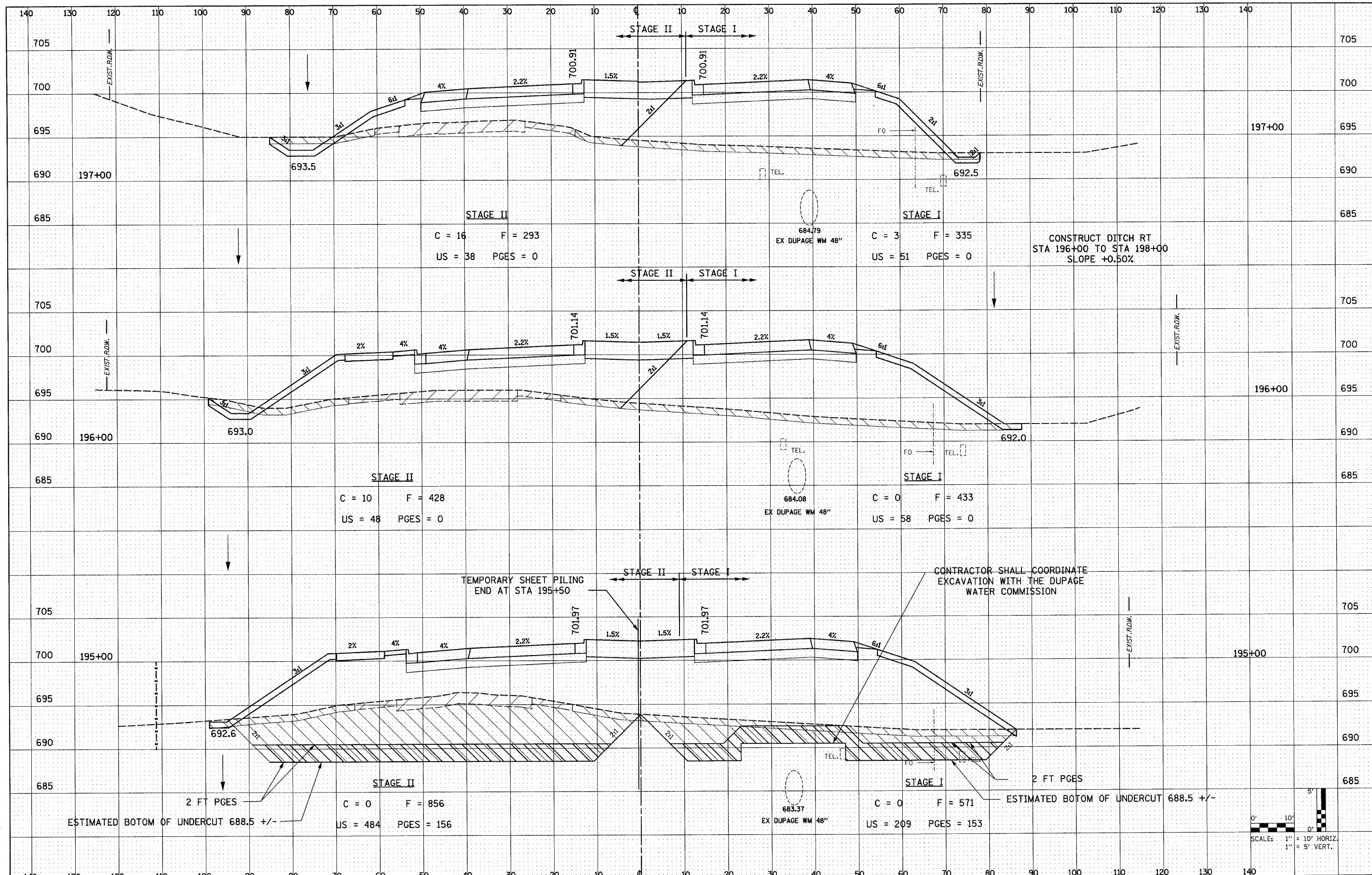


DATE	
BY	
FINAL SURVEY	
NOTE BOOK	
NO.	

DATE	
BY	
ORIGINAL SURVEY	
NOTE BOOK	
NO.	



FILE NAME = D162428-ah1-xssht.dgn  
 PLOT DATE = 12/3/2010  
 PLOT SCALE = 100.000 / IN.

**CHRISTIAN-ROGE & ASSOCIATES, INC.**  
 ENGINEERS-PLANNERS-SURVEYORS  
 211 WEST WACKER DRIVE  
 CHICAGO, ILLINOIS 60606  
 PHONE: (312)372-2023 FAX: (312)372-5274

DESIGNED -	S.J.P.	REVISED -	
DRAWN -	W.A.M.	REVISED -	
CHECKED -	M.P.	REVISED -	
DATE -	DECEMBER 3, 2010	REVISED -	

**STATE OF ILLINOIS  
 DEPARTMENT OF TRANSPORTATION**

<b>CROSS SECTIONS IL RTE 56</b>	
SCALE: NONE	SHEET NO. 46 OF 74 SHEETS
STA.	TO STA.

F.A.P. RTE.	SECTION	COUNTY	TOTAL SHEETS	SHEET NO.
365	(58&59) WRS-3	DUPAGE	466	383
CONTRACT NO. 62420				
FED. ROAD DIST. NO. 1 (ILLINOIS) FED. AID PROJECT				