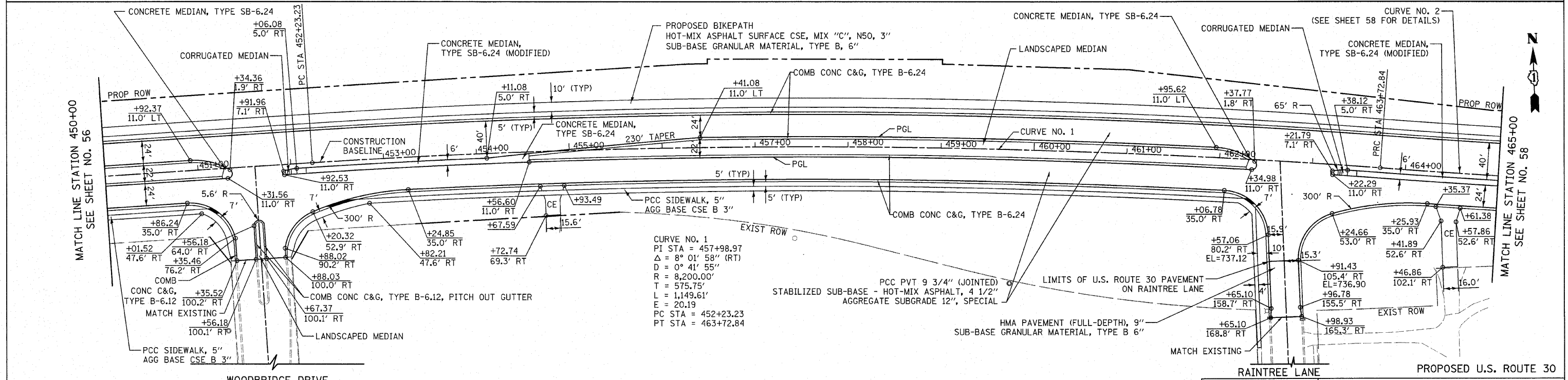
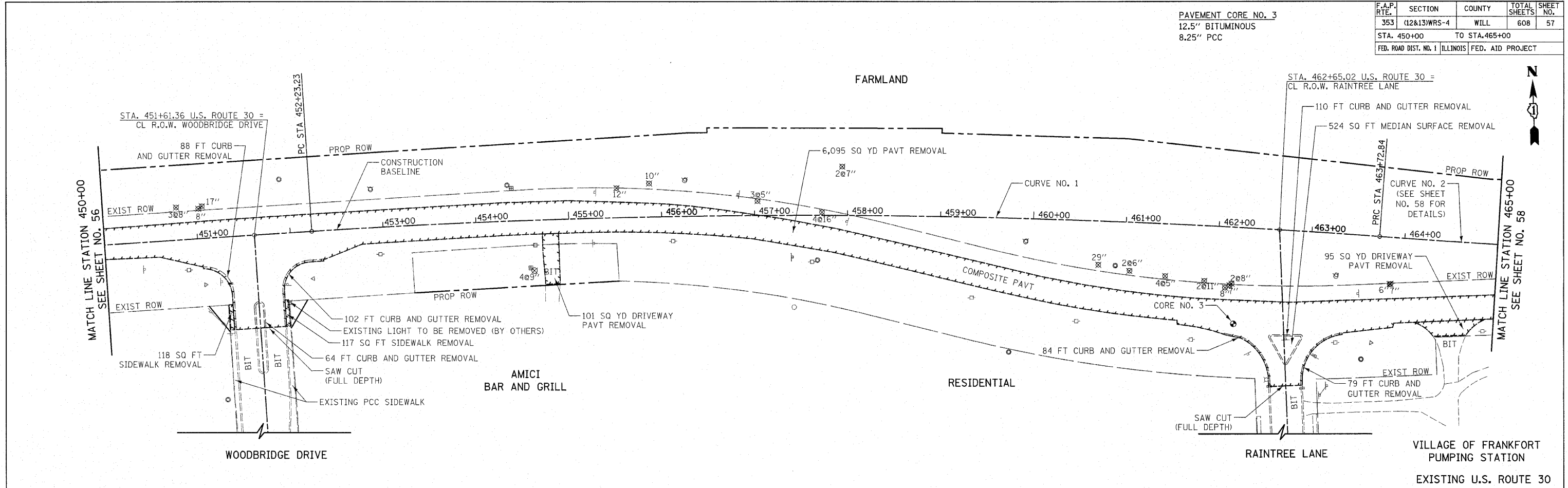


PAVEMENT CORE NO. 3
12.5" BITUMINOUS
8.25" PCC

F.A.P. RTE.	SECTION	COUNTY	TOTAL SHEETS	SHEET NO.
353	(12&13)WRS-4	WILL	608	57
STA. 450+00		TO STA. 465+00		
FED. ROAD DIST. NO. 1 ILLINOIS FED. AID PROJECT				



CURVE NO. 1
PI STA = 457+98.97
Δ = 8° 01' 58" (RT)
D = 0° 41' 55"
R = 8,200.00'
T = 575.75'
L = 1,149.61'
E = 20.19
PC STA = 452+23.23
PT STA = 463+72.84

- NOTES:
1. ALL DRIVEWAY RADII SHALL BE 15' UNLESS OTHERWISE NOTED. FOR FLARE RATES AND ADDITIONAL DRIVEWAY DETAILS SEE SHEET 496.
 2. ALL SIDE STREET CORNER RADII SHALL BE 50' UNLESS OTHERWISE NOTED.
 3. FOR CONCRETE MEDIAN DETAILS, SEE SHEET NO. 494.

REVISIONS	NAME	DATE

ILLINOIS DEPARTMENT OF TRANSPORTATION

U.S. ROUTE 30
ROADWAY PLANS

STATION 450+00 TO STATION 465+00

SCALE IN FEET
0 50

DATE 6/11/2010

DRAWN BY DJK
CHECKED BY JRV