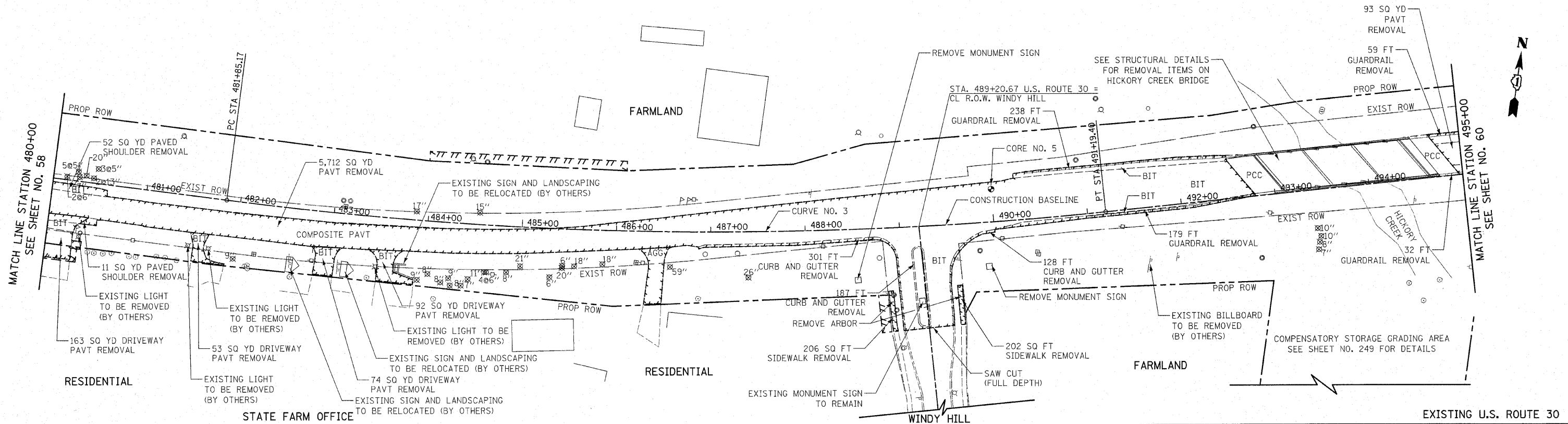
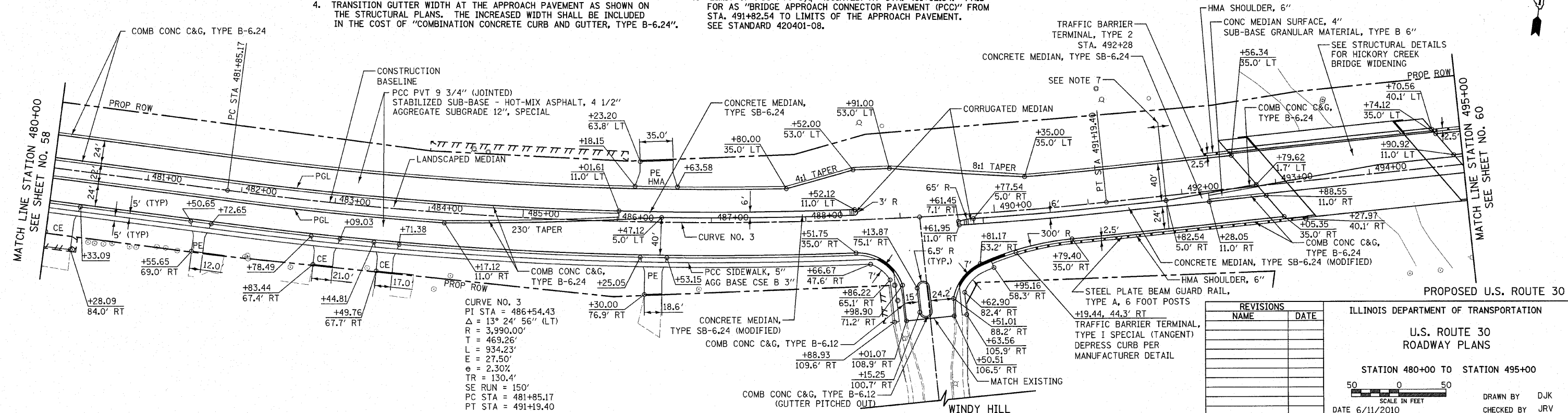


F.A.P. RTE.	SECTION	COUNTY	TOTAL SHEETS	SHEET NO.
353	(12&13)WRS-4	WILL	608	59
STA. 480+00		TO STA. 495+00		
FED. ROAD DIST. NO. 1		ILLINOIS FED. AID PROJECT		



- NOTES:
- ALL DRIVEWAY RADII SHALL BE 15' UNLESS OTHERWISE NOTED. FOR FLARE RATES AND ADDITIONAL DRIVEWAY DETAILS SEE SHEET 496.
 - ALL SIDE STREET CORNER RADII SHALL BE 50' UNLESS OTHERWISE NOTED.
 - FOR CONCRETE MEDIAN DETAILS, SEE SHEET NO. 494.
 - TRANSITION GUTTER WIDTH AT THE APPROACH PAVEMENT AS SHOWN ON THE STRUCTURAL PLANS. THE INCREASED WIDTH SHALL BE INCLUDED IN THE COST OF "COMBINATION CONCRETE CURB AND GUTTER, TYPE B-6.24".
 - FOR SUPERELEVATION DETAILS, AND GRADING FROM STA. 490+00 TO HICKORY CREEK BRIDGE, SEE SHEET NO. 301.
 - FOR DETAILS OF HMA SHOULDER BEHIND CURB AND GUTTER, SEE SHEET NO. 500.
 - LIMIT OF PCC PVT 9 3/4" (JOINTED) AT STA. 491+82.54. PAID FOR AS "BRIDGE APPROACH CONNECTOR PAVEMENT (PCC)" FROM STA. 491+82.54 TO LIMITS OF THE APPROACH PAVEMENT. SEE STANDARD 420401-08.



REVISIONS	
NAME	DATE

ILLINOIS DEPARTMENT OF TRANSPORTATION

U.S. ROUTE 30 ROADWAY PLANS

STATION 480+00 TO STATION 495+00

SCALE IN FEET

DATE 6/11/2010

DRAWN BY DJK
CHECKED BY JRV