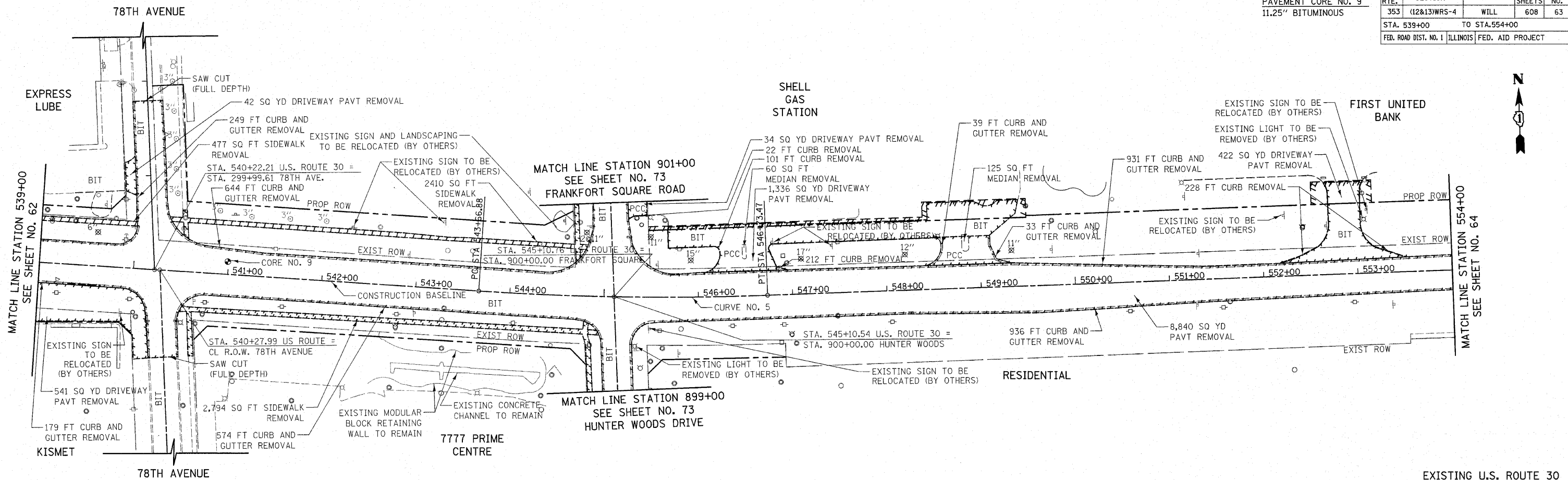
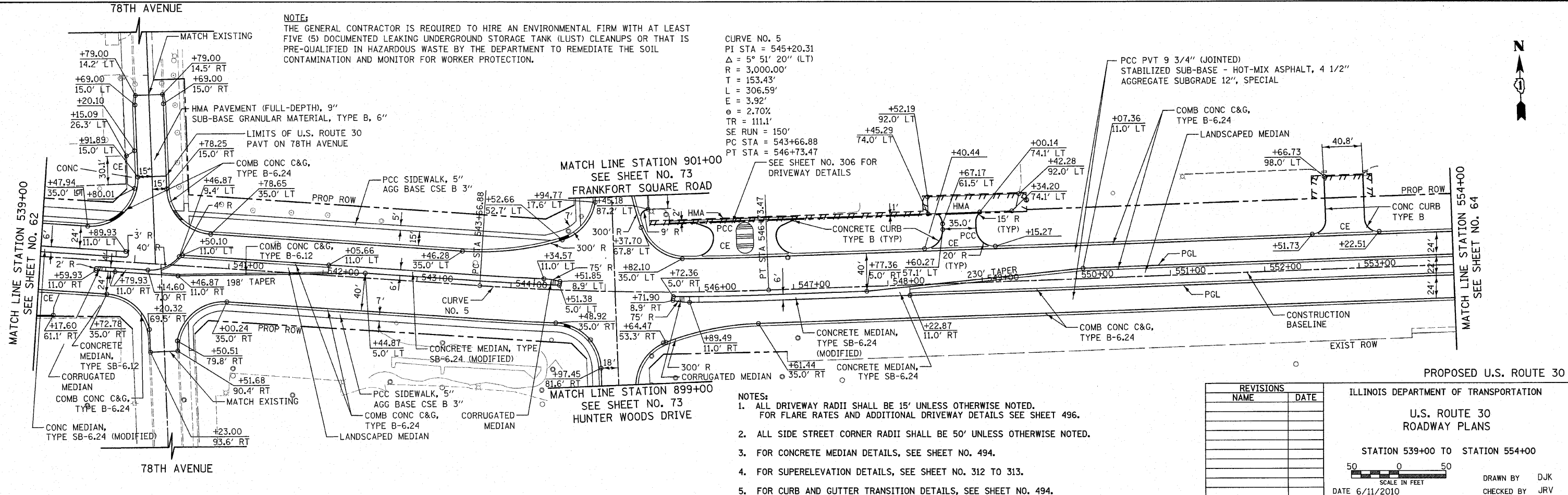


| F.A.P. RTE. | SECTION | COUNTY | TOTAL SHEETS | SHEET NO. |
|---|--------------|----------------|--------------|-----------|
| 353 | (12&13)WRS-4 | WILL | 608 | 63 |
| STA. 539+00 | | TO STA. 554+00 | | |
| FED. ROAD DIST. NO. 1 ILLINOIS FED. AID PROJECT | | | | |



NOTE:
THE GENERAL CONTRACTOR IS REQUIRED TO HIRE AN ENVIRONMENTAL FIRM WITH AT LEAST FIVE (5) DOCUMENTED LEAKING UNDERGROUND STORAGE TANK (LUST) CLEANUPS OR THAT IS PRE-QUALIFIED IN HAZARDOUS WASTE BY THE DEPARTMENT TO REMEDIATE THE SOIL CONTAMINATION AND MONITOR FOR WORKER PROTECTION.

CURVE NO. 5
PI STA = 545+20.31
 $\Delta = 5^\circ 51' 20''$ (LT)
R = 3,000.00'
T = 153.43'
L = 306.59'
E = 3.92'
e = 2.70%
TR = 111.1'
SE RUN = 150'
PC STA = 543+66.88
PT STA = 546+73.47



- NOTES:**
1. ALL DRIVEWAY RADII SHALL BE 15' UNLESS OTHERWISE NOTED. FOR FLARE RATES AND ADDITIONAL DRIVEWAY DETAILS SEE SHEET 496.
 2. ALL SIDE STREET CORNER RADII SHALL BE 50' UNLESS OTHERWISE NOTED.
 3. FOR CONCRETE MEDIAN DETAILS, SEE SHEET NO. 494.
 4. FOR SUPERELEVATION DETAILS, SEE SHEET NO. 312 TO 313.
 5. FOR CURB AND GUTTER TRANSITION DETAILS, SEE SHEET NO. 494.

| REVISIONS | |
|-----------|------|
| NAME | DATE |
| | |
| | |
| | |
| | |
| | |
| | |
| | |
| | |
| | |

ILLINOIS DEPARTMENT OF TRANSPORTATION
U.S. ROUTE 30 ROADWAY PLANS
STATION 539+00 TO STATION 554+00

SCALE IN FEET
0 50

DATE 6/11/2010

DRAWN BY DJK
CHECKED BY JRV