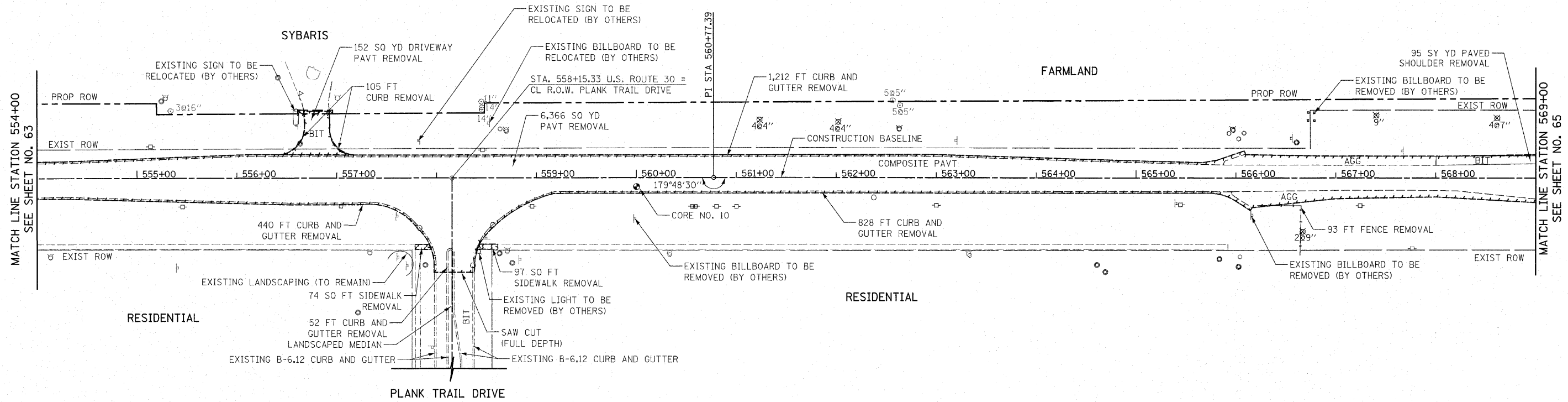
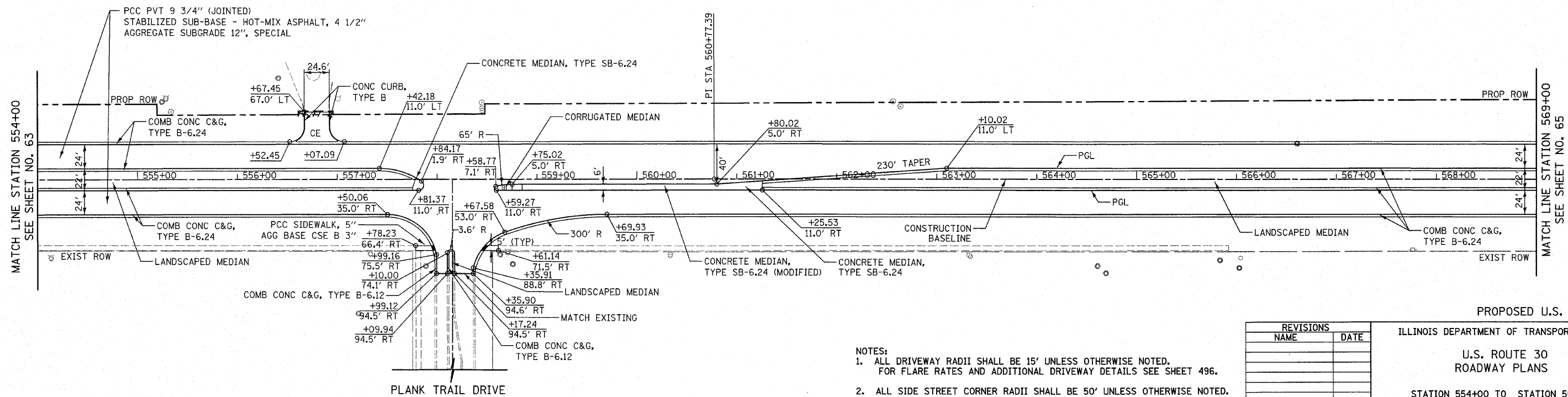


PAVEMENT CORE NO. 10
12" BITUMINOUS
9" PCC

F.A.P. RTE.	SECTION	COUNTY	TOTAL SHEETS	SHEET NO.
353	(12&13)WRS-4	WILL	608	64
STA. 554+00		TO STA. 569+00		
FED. ROAD DIST. NO. 1		ILLINOIS FED. AID PROJECT		



EXISTING U.S. ROUTE 30



PROPOSED U.S. ROUTE 30

- NOTES:
- ALL DRIVEWAY RADII SHALL BE 15' UNLESS OTHERWISE NOTED. FOR FLARE RATES AND ADDITIONAL DRIVEWAY DETAILS SEE SHEET 496.
 - ALL SIDE STREET CORNER RADII SHALL BE 50' UNLESS OTHERWISE NOTED.
 - FOR CONCRETE MEDIAN DETAILS, SEE SHEET NO. 494.

REVISIONS	
NAME	DATE

ILLINOIS DEPARTMENT OF TRANSPORTATION

U.S. ROUTE 30
ROADWAY PLANS

STATION 554+00 TO STATION 569+00

SCALE IN FEET
50 0 50

DATE 6/11/2010

DRAWN BY DJK
CHECKED BY JRJ