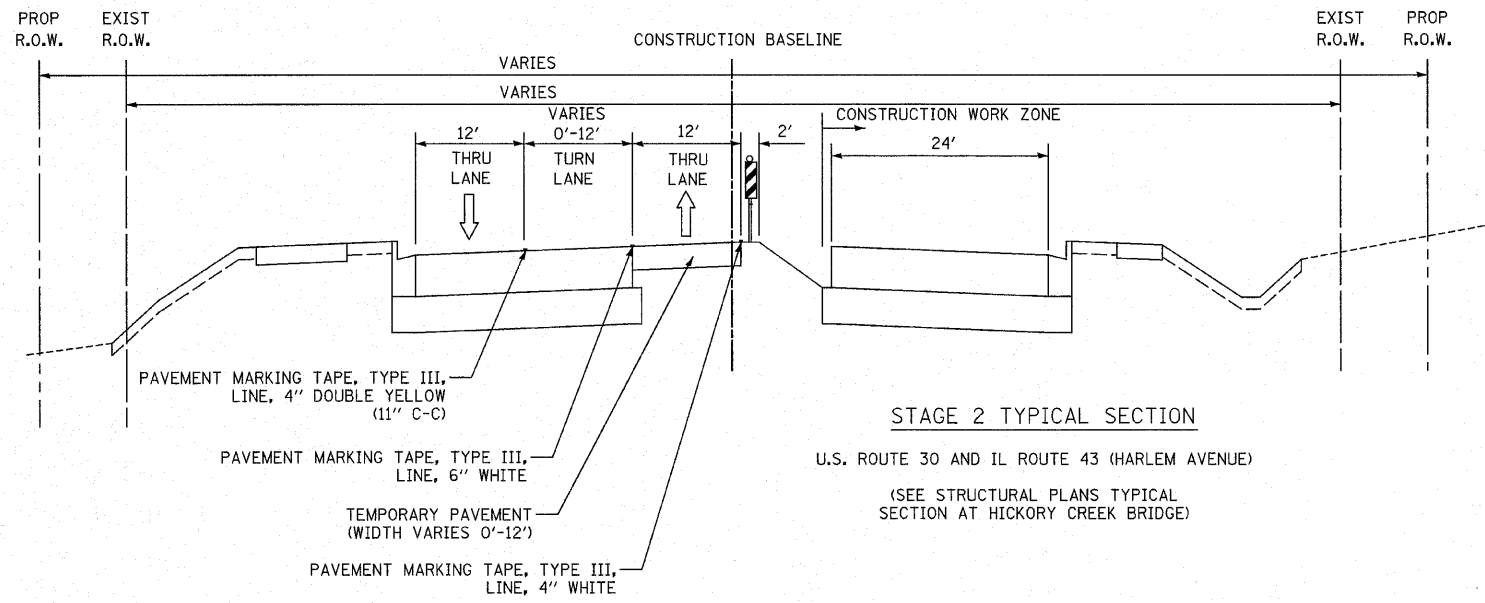


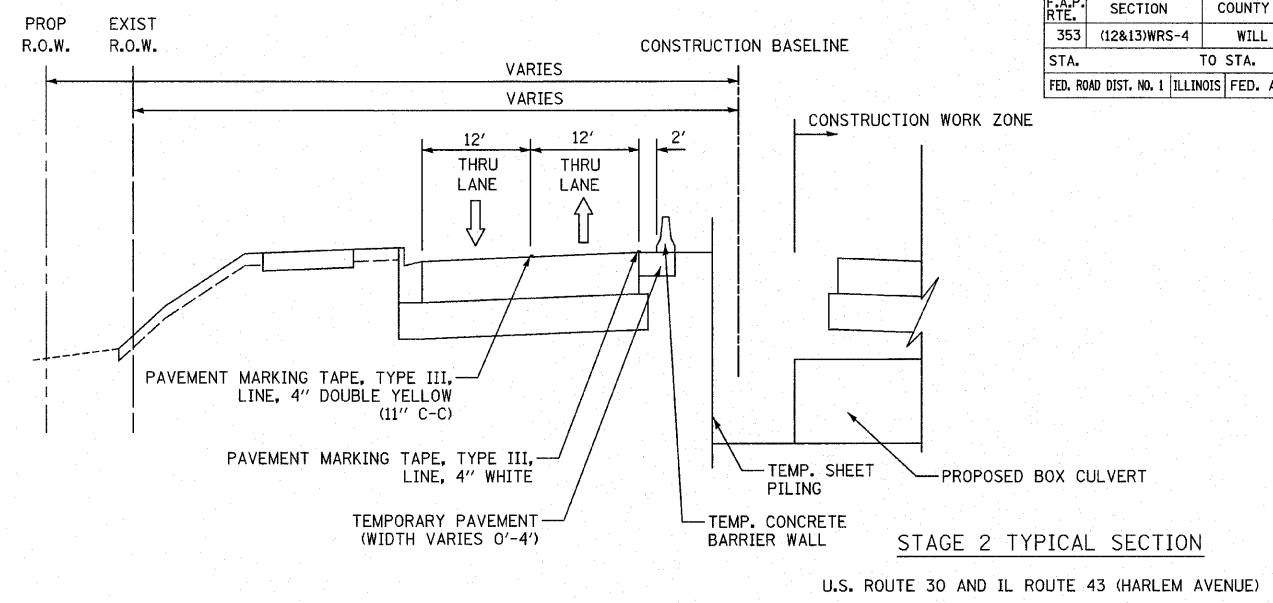
F.A.P. RTE.	SECTION	COUNTY	TOTAL SHEETS	SHEET NO.
353	(12&13)WRS-4	WILL	608	93
STA.		TO STA.		
FED. ROAD DIST. NO. 1 ILLINOIS FED. AID PROJECT				



STAGE 2 TYPICAL SECTION  
U.S. ROUTE 30 AND IL ROUTE 43 (HARLEM AVENUE)  
(SEE STRUCTURAL PLANS TYPICAL SECTION AT HICKORY CREEK BRIDGE)

STAGE 2 NOTES

1. CONSTRUCT TEMPORARY PAVEMENT REQUIRED FOR STAGE 2 TRAFFIC.
2. MOVE TEMPORARY SIGNAL HEADS.
3. SHIFT TRAFFIC TO PERMANENT PAVEMENT CONSTRUCTED DURING STAGE 1.
4. EXTEND SEWER LATERALS AND BOX CULVERTS.
5. CONSTRUCT EASTBOUND LANES.
6. GRADE REMAINING MEDIAN AREAS TO FINISH GRADE ELEVATIONS AND PLACE SUB-BASE MATERIAL.



STAGE 2 TYPICAL SECTION  
U.S. ROUTE 30 AND IL ROUTE 43 (HARLEM AVENUE)

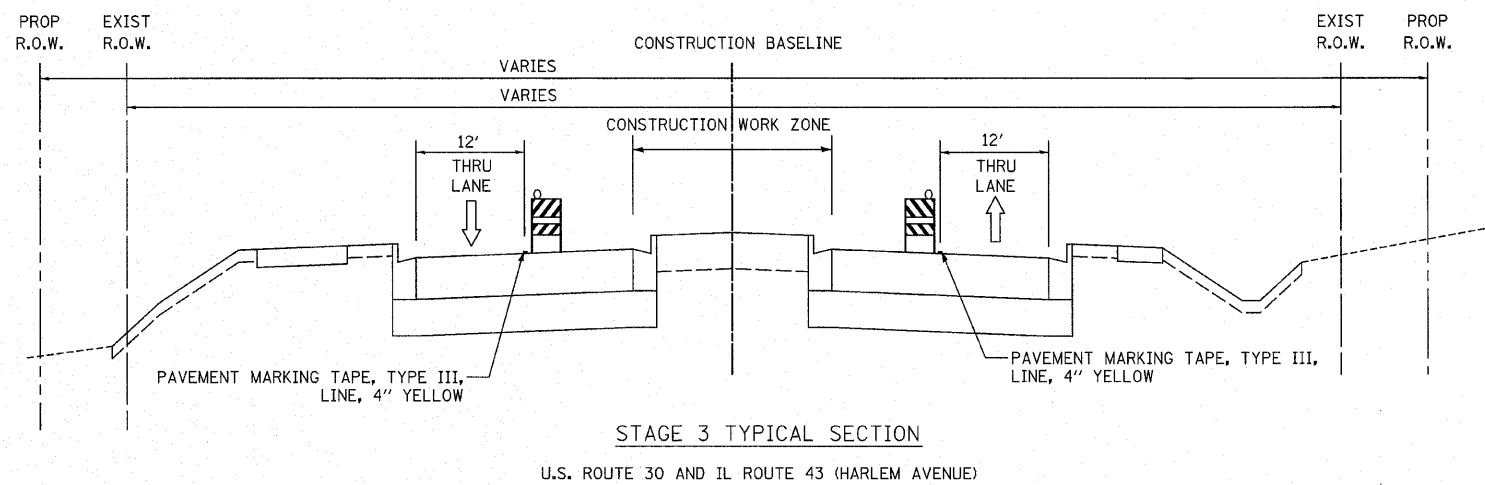
STA. 440+50 TO STA. 442+50  
STA. 990+50 TO STA. 992+25 (HARLEM AVENUE)

STAGE 2A NOTES

1. CONSTRUCT SIDE STREETS. ADJACENT SIDE STREETS SHALL NOT BE CLOSED AT THE SAME TIME. THE CONTRACTOR SHALL ALTERNATE SIDE STREET CLOSURES.
2. MOVE TEMPORARY SIGNAL HEADS AT THE INTERSECTION OF U.S. ROUTE 30 AND IL ROUTE 43.
3. CONSTRUCT PERMANENT PAVEMENT AT LOCATION OF CROSS-OVER AND AT THE INTERSECTION OF U.S. ROUTE 30 AND IL ROUTE 43.

STAGE 2B NOTES

1. CONSTRUCT PERMANENT PAVEMENT AT LOCATION OF CROSS-OVER.



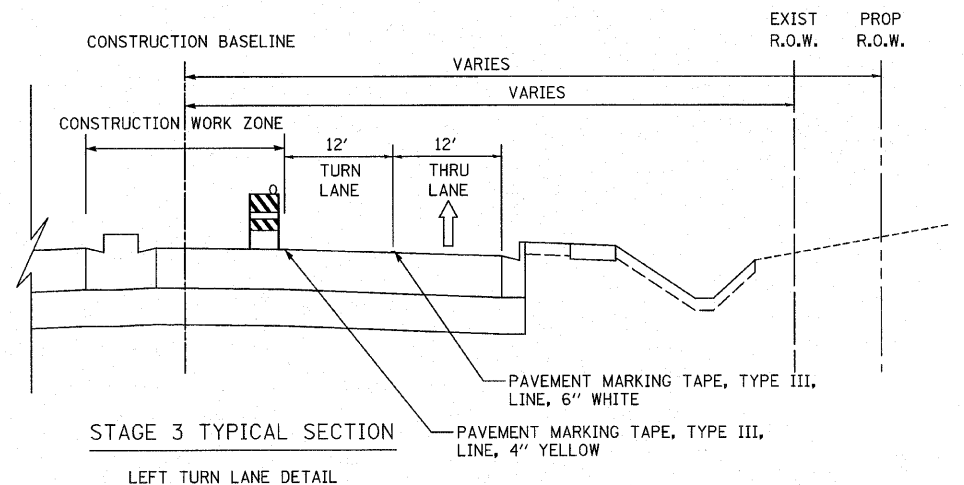
STAGE 3 TYPICAL SECTION  
U.S. ROUTE 30 AND IL ROUTE 43 (HARLEM AVENUE)

STAGE 3 NOTES

1. MOVE TEMPORARY SIGNAL HEADS AND SHIFT TRAFFIC ON U.S. ROUTE 30.
2. CONSTRUCT REMAINING PERMANENT PAVEMENT AND CURB AND GUTTER IN MEDIAN AREAS ALONG U.S. ROUTE 30. ACCESS ACROSS THE MEDIAN AT INTERSECTIONS SHALL BE MAINTAINED EXCEPT FOR SHORT DURATIONS WHEN CONSTRUCTION IS OCCURRING AT THE INTERSECTION. THE TEMPORARY LEFT TURN LANES ALONG U.S. ROUTE 30 MAY BE TEMPORARILY CLOSED WHEN THE CONTRACTOR IS CONSTRUCTING THE PERMANENT PAVEMENT ADJACENT TO THESE LANES.
3. PLACE LANDSCAPING IN MEDIANS.

STAGE 3A NOTES

1. SHIFT TRAFFIC ON HARLEM AVENUE AND ON U.S. ROUTE 30 AT HARLEM AVENUE.
2. CONSTRUCT REMAINING PERMANENT PAVEMENT AND CURB AND GUTTER IN MEDIAN AREAS ALONG HARLEM AVENUE.
3. CONSTRUCT REMAINING PERMANENT PAVEMENT IN MEDIAN AREAS ALONG U.S. ROUTE 30 AT THE INTERSECTIONS OF PFEIFFER ROAD, 80TH AVENUE AND HUNTER WOODS / FRANKFORT SQUARE. ACCESS ACROSS THE MEDIAN AT THESE INTERSECTIONS SHALL BE MAINTAINED EXCEPT FOR SHORT DURATIONS WHEN CONSTRUCTION IS OCCURRING AT THE INTERSECTIONS.
4. PLACE LANDSCAPING IN MEDIANS ON HARLEM AVENUE.
5. MILL EXISTING PAVEMENT AND BASE COURSE WIDENING ON HARLEM. PLACE BINDER AND SURFACE COURSE ON SIDE ROADS AND HARLEM AVENUE USING DAILY LANE CLOSURES IN ACCORDANCE WITH STANDARD 701201 AND 701501.



STAGE 3 TYPICAL SECTION  
LEFT TURN LANE DETAIL

6. PLACE AGGREGATE SHOULDERS ON HARLEM AVENUE USING DAILY LANE CLOSURES IN ACCORDANCE WITH STANDARD 701201.
7. PLACE PERMANENT PAVEMENT MARKINGS USING DAILY LANE CLOSURES IN ACCORDANCE WITH STANDARD 701201 AND 701501. ACTIVATE PERMANENT SIGNALS.

REVISIONS	
NAME	DATE

ILLINOIS DEPARTMENT OF TRANSPORTATION  
MAINTENANCE OF TRAFFIC  
TYPICAL SECTIONS

SCALE: VERT. NOT TO SCALE  
HORIZ. NOT TO SCALE  
DATE 6/11/2010  
DRAWN BY DJK  
CHECKED BY JRJ