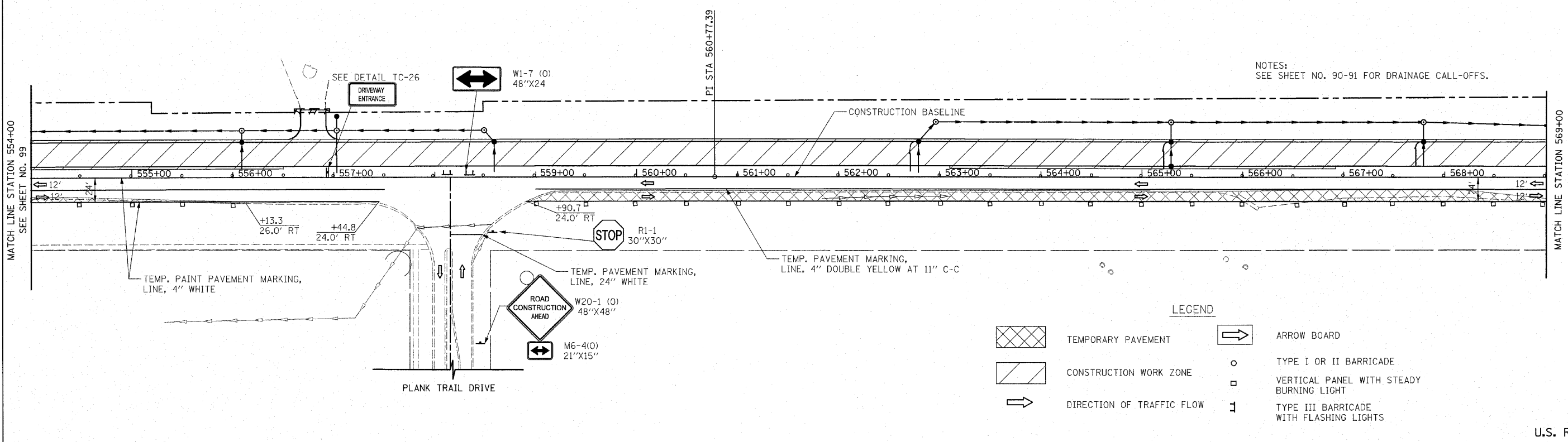
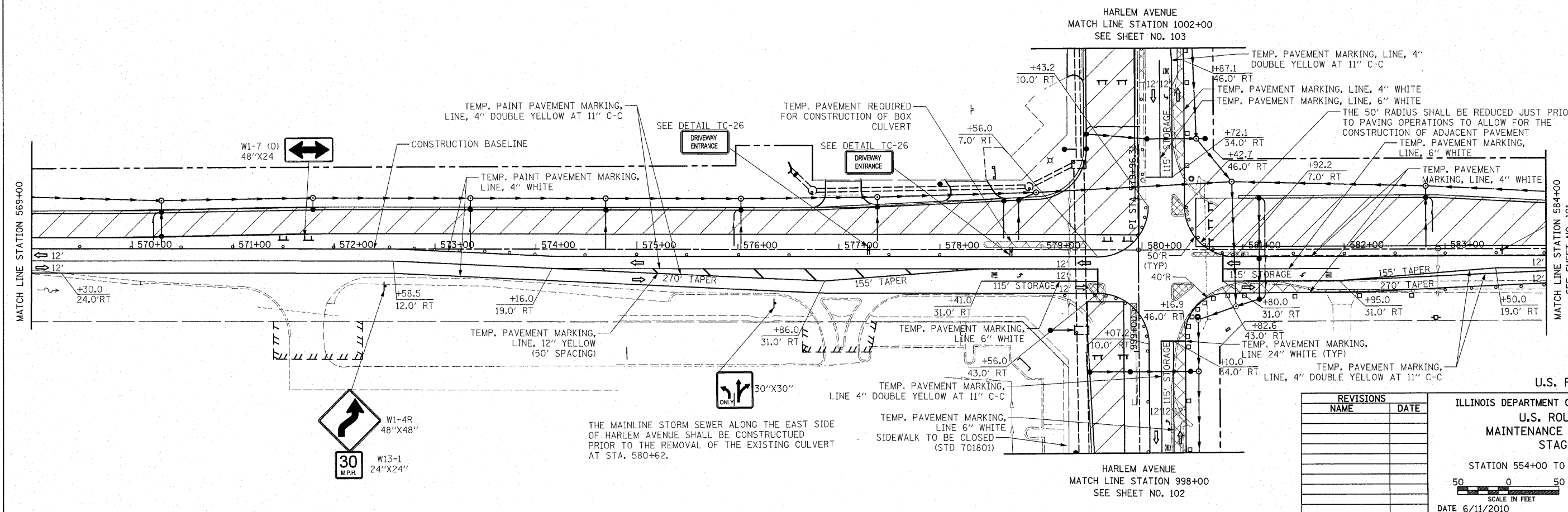


NOTES:
SEE SHEET NO. 90-91 FOR DRAINAGE CALL-OFFS.



- LEGEND**
- TEMPORARY PAVEMENT
 - CONSTRUCTION WORK ZONE
 - DIRECTION OF TRAFFIC FLOW
 - ARROW BOARD
 - TYPE I OR II BARRICADE
 - VERTICAL PANEL WITH STEADY BURNING LIGHT
 - TYPE III BARRICADE WITH FLASHING LIGHTS

U.S. ROUTE 30



REVISIONS	
NAME	DATE

ILLINOIS DEPARTMENT OF TRANSPORTATION
U.S. ROUTE 30
MAINTENANCE OF TRAFFIC
STAGE 1

STATION 554+00 TO STATION 584+00

50 0 50
SCALE IN FEET

DATE 6/11/2010

DRAWN BY DJK
CHECKED BY JRV

THE MAINLINE STORM SEWER ALONG THE EAST SIDE OF HARLEM AVENUE SHALL BE CONSTRUCTED PRIOR TO THE REMOVAL OF THE EXISTING CULVERT AT STA. 580+62.