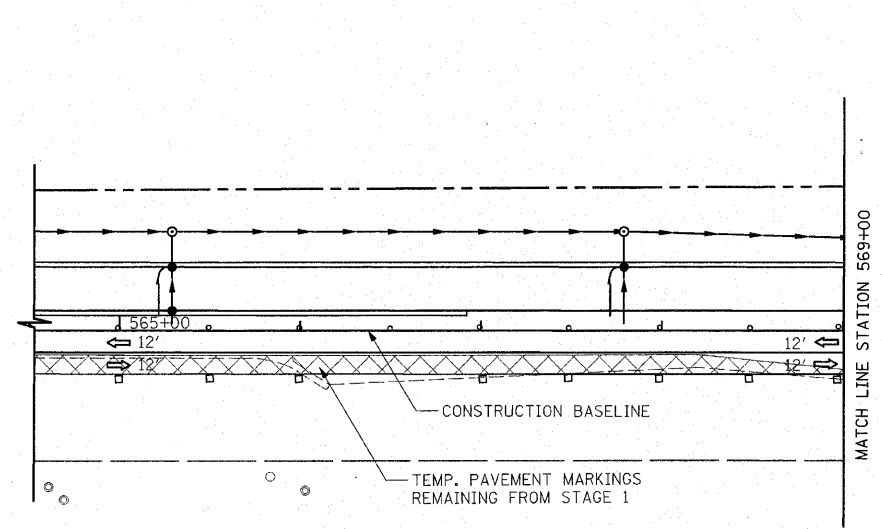
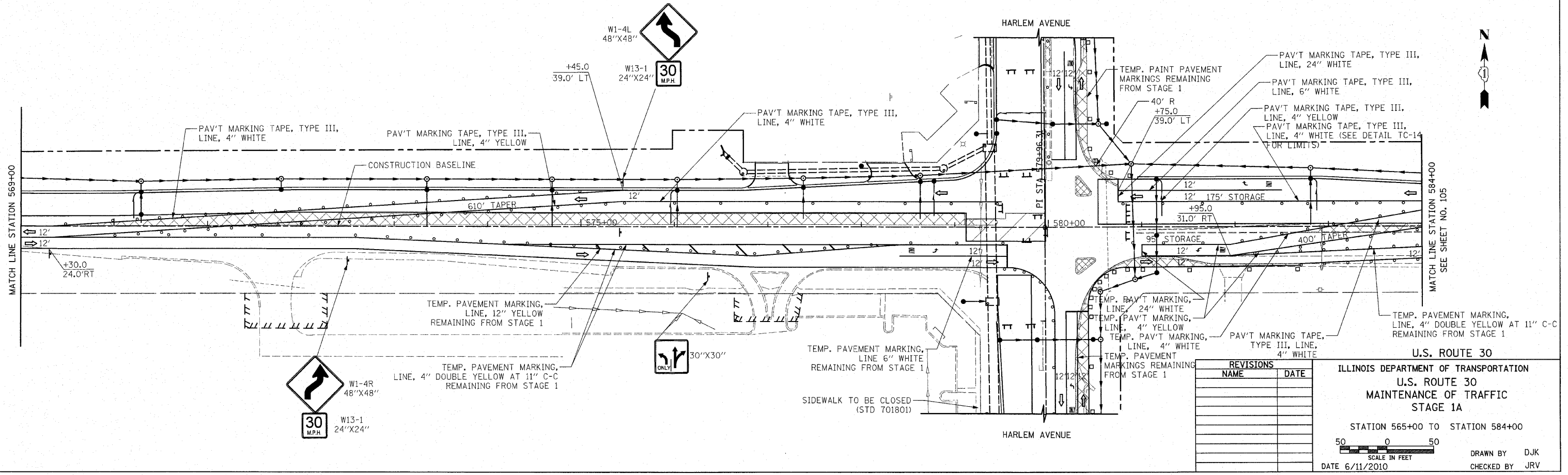


F.A.P. RTE.	SECTION	COUNTY	TOTAL SHEETS	SHEET NO.
353	(12&13)WRS-4	WILL	608	104
STA. 565+00		TO STA. 584+00		
FED. ROAD DIST. NO. 1 ILLINOIS FED. AID PROJECT				



LEGEND

- TEMPORARY PAVEMENT
 - CONSTRUCTION WORK ZONE
 - DIRECTION OF TRAFFIC FLOW
 - ARROW BOARD
 - TYPE I OR II BARRICADE
 - VERTICAL PANEL WITH STEADY BURNING LIGHT
 - TYPE III BARRICADE WITH FLASHING LIGHTS
- U.S. ROUTE 30**



REVISIONS	
NAME	DATE

U.S. ROUTE 30
ILLINOIS DEPARTMENT OF TRANSPORTATION
U.S. ROUTE 30
MAINTENANCE OF TRAFFIC
STAGE 1A

STATION 565+00 TO STATION 584+00

SCALE IN FEET
 50 0 50

DATE 6/11/2010

DRAWN BY DJK
 CHECKED BY JRV