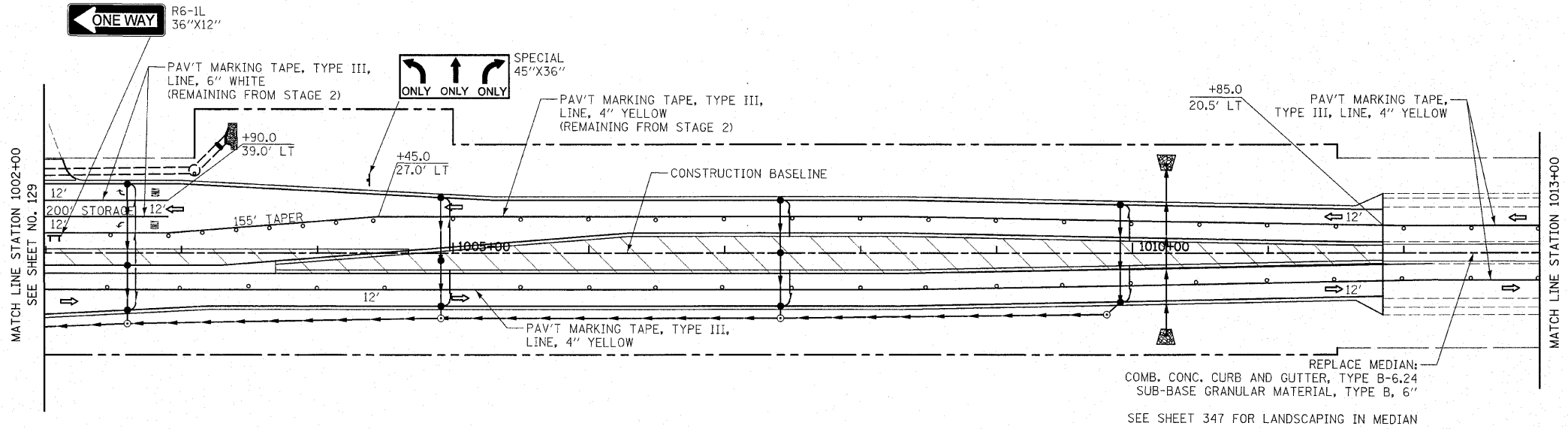


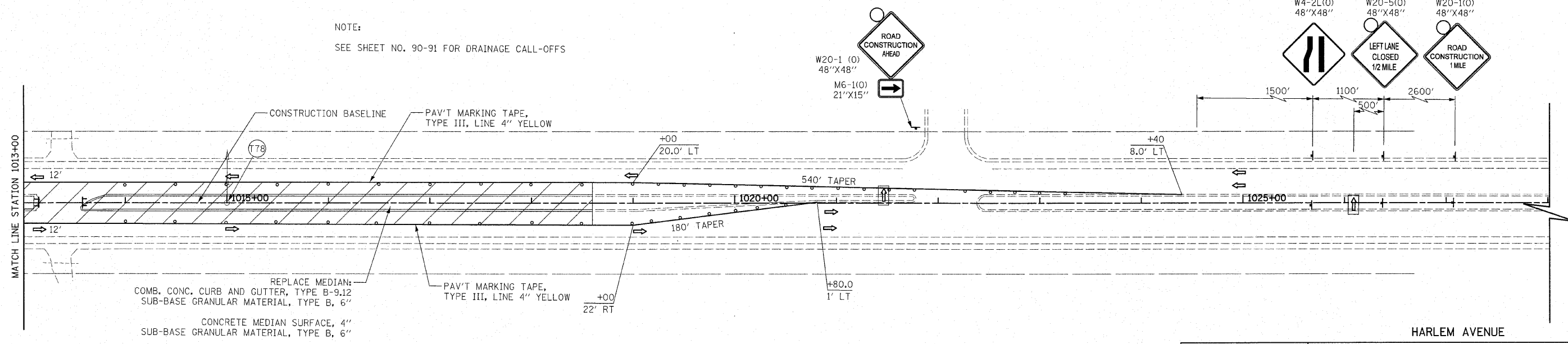
F.A.P. RTE.	SECTION	COUNTY	TOTAL SHEETS	SHEET NO.
353	(12&13)WRS-4	WILL	608	131
STA. 1002+00		TO STA. 1028+00		
FED. ROAD DIST. NO. 1 ILLINOIS FED. AID PROJECT				



LEGEND

	TEMPORARY PAVEMENT		ARROW BOARD
	CONSTRUCTION WORK ZONE		TYPE I OR II BARRICADE
	DIRECTION OF TRAFFIC FLOW		VERTICAL PANEL WITH STEADY BURNING LIGHT
			TYPE III BARRICADE WITH FLASHING LIGHT

HARLEM AVENUE



REVISIONS	
NAME	DATE

HARLEM AVENUE

ILLINOIS DEPARTMENT OF TRANSPORTATION  
HARLEM AVENUE  
MAINTENANCE OF TRAFFIC  
STAGE 3A

STATION 1002+00 TO STATION 1028+00

50 0 50  
SCALE IN FEET

DATE 6/11/2010 DRAWN BY DJK  
CHECKED BY JRJ