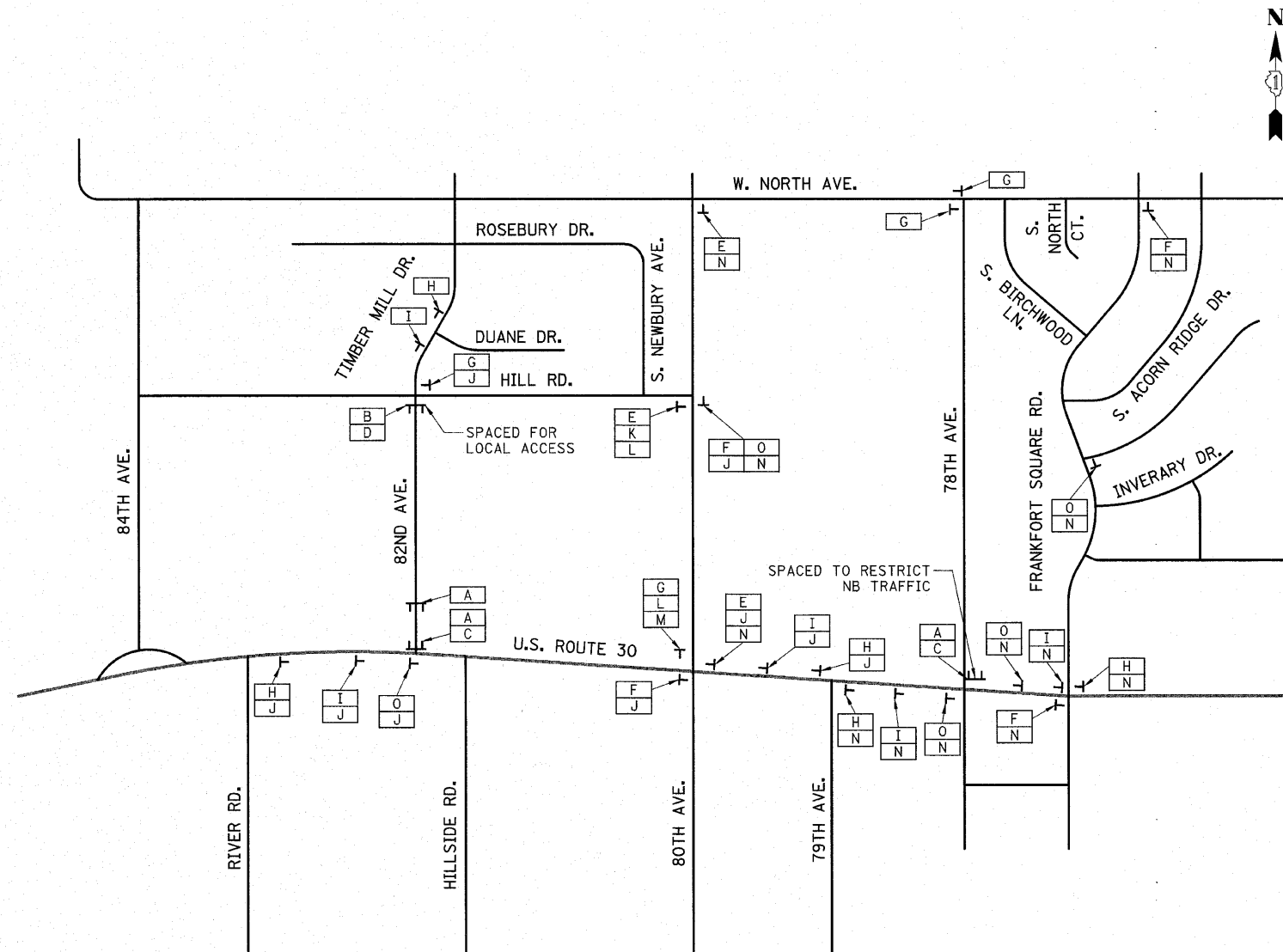


F.A.P. RTE.	SECTION	COUNTY	TOTAL SHEETS	SHEET NO.
353	(12&13)WRS-4	WILL	608	133
STA.		TO STA.		
FED. ROAD DIST. NO. 1		ILLINOIS	FED. AID PROJECT	

LEGEND

- (A) ROAD CLOSED R11-2 48" x 30"
  - (B) ROAD CLOSED TO THRU TRAFFIC R11-4 60" x 30"
  - (C) DETOUR MR-10(R) 48" x 18"
  - (D) DETOUR MR-10(L) 48" x 18"
  - (E) DETOUR M4-9(R) 30" x 24"
  - (F) DETOUR M4-9(L) 30" x 24"
  - (G) END DETOUR M4-8A 24" x 18"
  - (H) ROAD CLOSED AHEAD W20-3 48" x 48"
  - (I) DETOUR AHEAD W20-2 48" x 48"
  - (J) 82ND AVE W17-1100 33" x 12"
  - (K) TO M4-5 24" x 12"
  - (L) 30 M1-4 24" x 24"
  - (M) M6-4 24" x 15"
  - (N) 78TH AVE W17-1100 33" x 12"
  - (O) DETOUR M4-9 30" x 24"
- TYPE III BARRICADE



THE WORK SHOWN ON THIS SHEET SHALL BE PAID FOR AS 1 EACH FOR "TRAFFIC CONTROL AND PROTECTION FOR TEMPORARY DETOURS".

NOTES:  
 SIGN I TO BE PLACED MIN. 100' PRIOR TO INTERSECTION.  
 SIGN H TO BE PLACED MIN. 100' PRIOR TO SIGN I.  
 SIGNS A, B, C AND D TO BE PLACED ON TYPE III BARRICADE.

REVISIONS	
NAME	DATE

ILLINOIS DEPARTMENT OF TRANSPORTATION  
 DETOUR PLAN STAGE 1  
 82ND AVENUE/78TH AVENUE  
 SCALE: VERT. NOT TO SCALE  
 DATE: 6/11/2010  
 DRAWN BY: DJK  
 CHECKED BY: JRJ