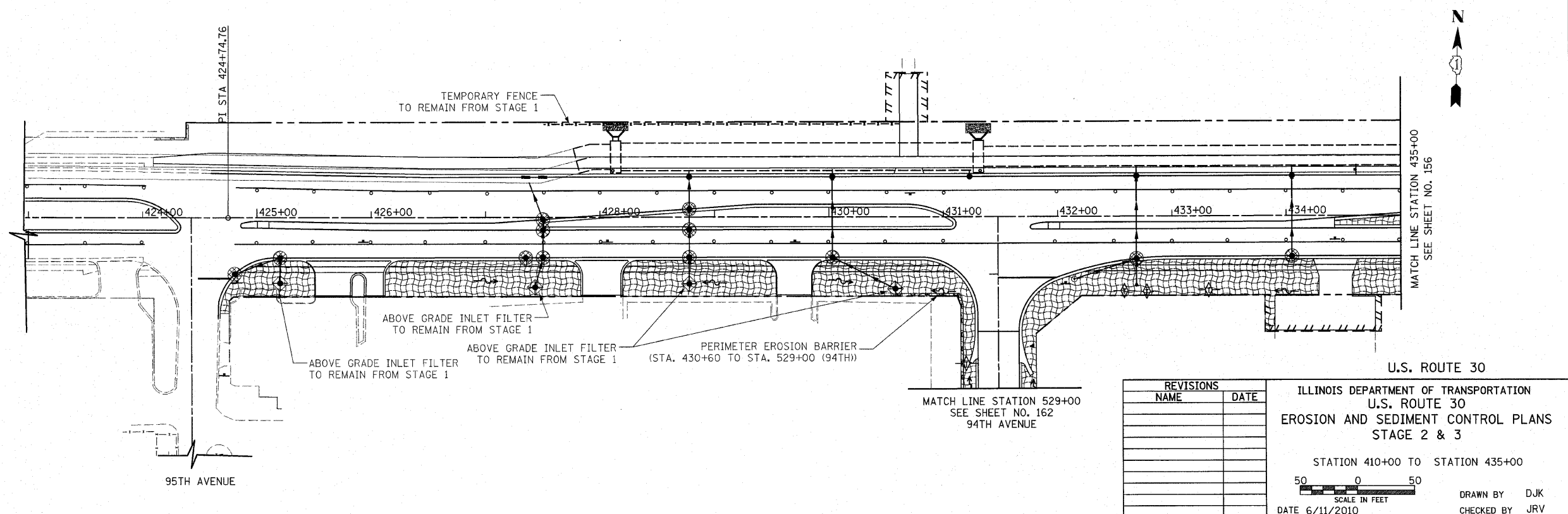


F.A.P. RTE.	SECTION	COUNTY	TOTAL SHEETS	SHEET NO.
353	(12&13)WRS-4	WILL	608	155
STA. 410+00		TO STA. 435+00		
FED. ROAD DIST. NO. 1		ILLINOIS FED. AID PROJECT		

NOTE: INLET FILTERS PLACED DURING STAGE 1 SHALL BE MAINTAINED THROUGHOUT STAGES 2 AND 3, UNLESS OTHERWISE DIRECTED BY THE ENGINEER.



REVISIONS	
NAME	DATE

ILLINOIS DEPARTMENT OF TRANSPORTATION
 U.S. ROUTE 30
 EROSION AND SEDIMENT CONTROL PLANS
 STAGE 2 & 3

STATION 410+00 TO STATION 435+00

50 0 50
 SCALE IN FEET

DATE 6/11/2010

DRAWN BY DJK
 CHECKED BY JRV