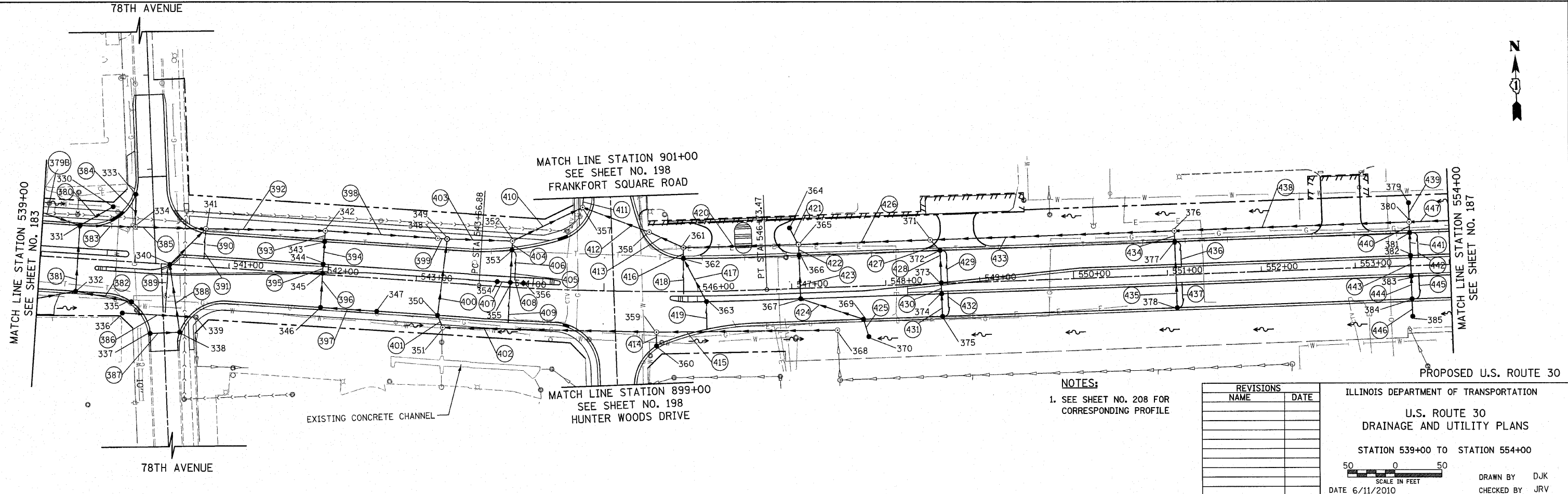
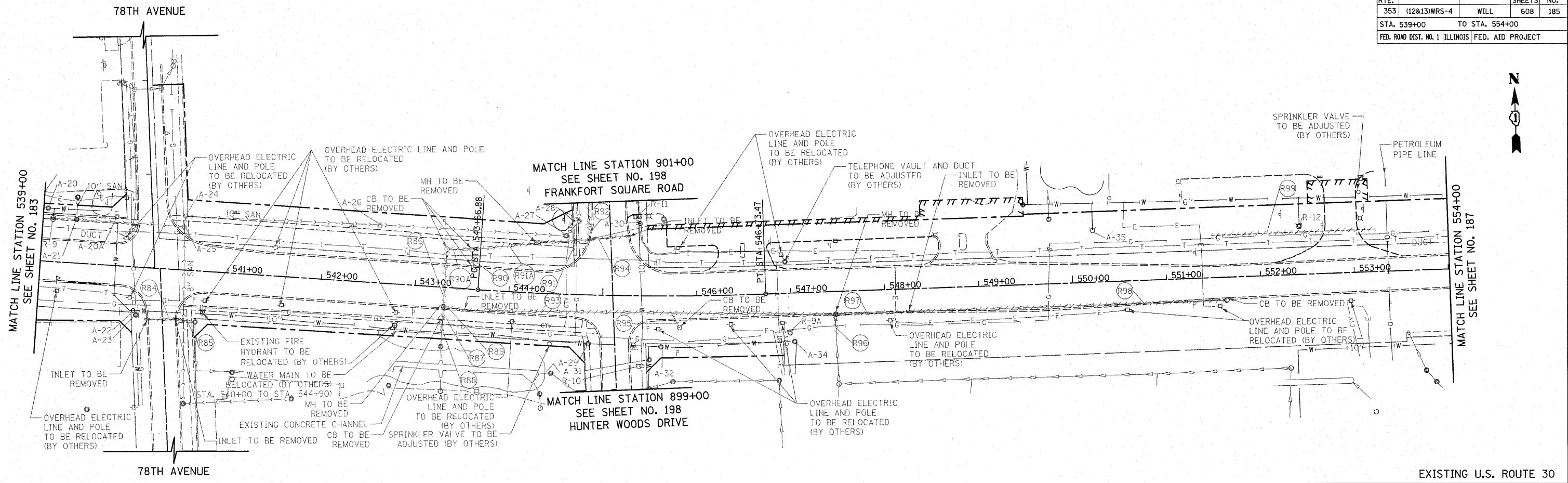


F.A.P. RTE.	SECTION	COUNTY	TOTAL SHEETS	SHEET NO.
353	(12&13)WRS-4	WILL	608	185
STA. 539+00		TO STA. 554+00		
FED. ROAD DIST. NO. 1 ILLINOIS FED. AID PROJECT				



NOTES:
 1. SEE SHEET NO. 208 FOR CORRESPONDING PROFILE

REVISIONS	
NAME	DATE

ILLINOIS DEPARTMENT OF TRANSPORTATION
**U.S. ROUTE 30
 DRAINAGE AND UTILITY PLANS**
 STATION 539+00 TO STATION 554+00
 DATE 6/11/2010
 DRAWN BY DJK
 CHECKED BY JRV

