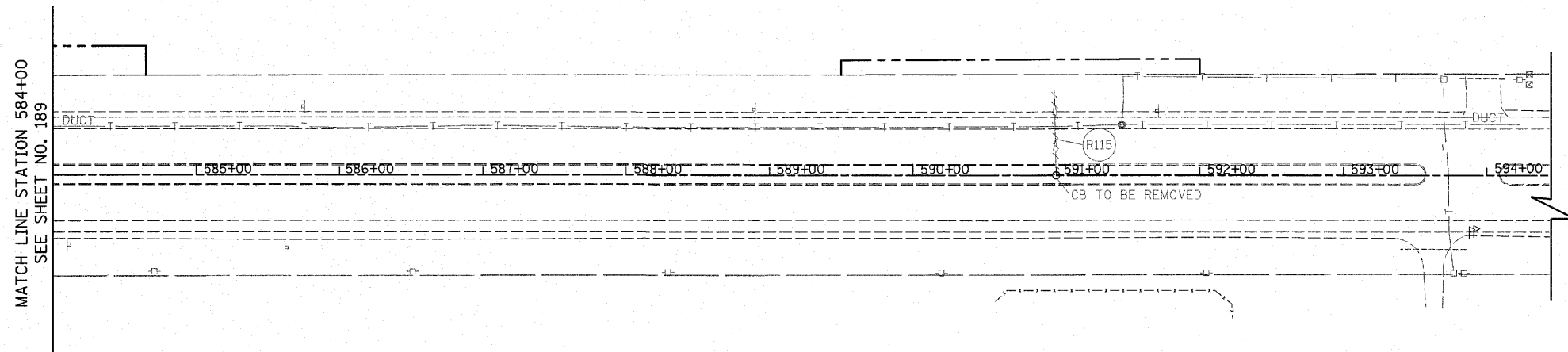
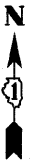


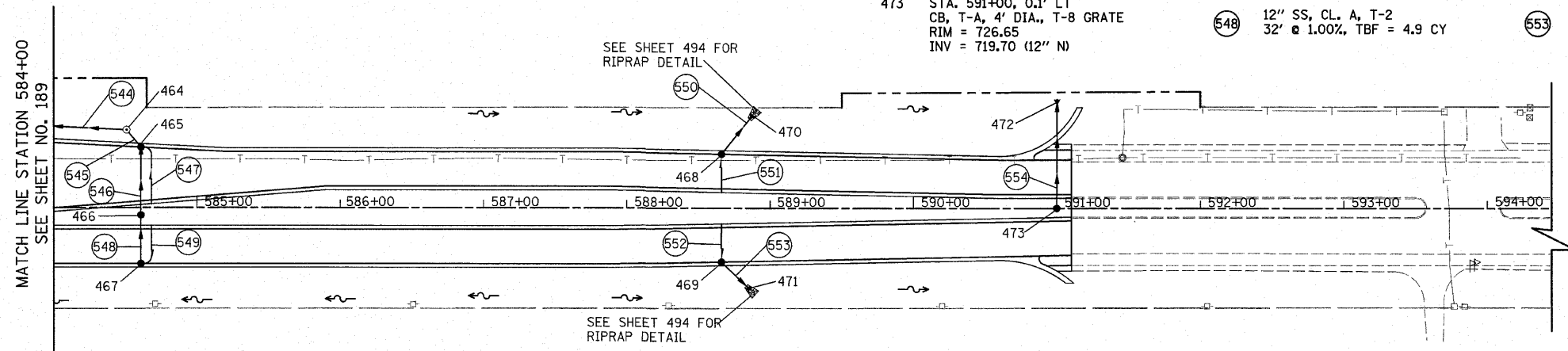
F.A.P. RTE.	SECTION	COUNTY	TOTAL SHEETS	SHEET NO.
353	(12&13)WRS-4	WILL	608	191
STA. 584+00		TO STA. 599+00		
FED. ROAD DIST. NO. 1 ILLINOIS FED. AID PROJECT				



(R115) 57' STORM SEWER REMOVAL 12"  
TBF = 3.3 CY

EXISTING U.S. ROUTE 30

464 STA. 584+51, 54.1' LT MH, T-A, 4'-DIA., T-1 FR. CL. RIM = 727.25 INV = 721.91 (18" W) INV = 722.52 (12" SE)	466 STA. 584+61, 5.2' RT CB, T-A, 4'-DIA., T-8 GRATE RIM = 727.94 INV = 723.07 (12" N & S)	468 STA. 588+66, 37.5' LT CB, T-C, T-24 F&G RIM = 727.20 INV = 724.99 (12" NE, 4" S)	470 STA. 588+88, 64.8' LT PRC FLARED END SECTION, 12" INV = 724.80	(544) SEE SHEET. NO. 143	(549) 30' - PIPE UNDERDRAINS 4"	(554) 12" SS, CL. A, T-2 69' @ 1.00%, TBF = 18.8 CY
465 STA. 584+61, 42.1' LT CB, T-A, 4'-DIA., T-24 F&G RIM = 727.11 INV = 722.62 (12" S & NW) INV = 723.11 (4" E)	467 STA. 584+61, 39.0' RT CB, T-C, T-24 F&G RIM = 727.19 INV = 723.39 (12" N, 4" E)	469 STA. 588+66, 37.5' RT CB, T-C, T-24 F&G RIM = 727.20 INV = 725.09 (12" SE, 4" N)	471 STA. 588+86, 56.6' RT PRC FLARED END SECTION, 12" INV = 724.98	(545) 12" SS, CL. A, T-2 10' @ 1.00%, TBF = 0.0 CY	(550) 12" SS, CL. A, T-1 27' @ 0.57%, TBF = 0.0 CY	
			472 STA. 591+00, 75.6' LT PRC FLARED END SECTION, 12" INV = 718.96	(546) 12" SS, CL. A, T-2 45' @ 1.00%, TBF = 8.7 CY	(551) 27' - PIPE UNDERDRAINS 4"	
			473 STA. 591+00, 0.1' LT CB, T-A, 4' DIA., T-8 GRATE RIM = 726.65 INV = 719.70 (12" N)	(547) 42' - PIPE UNDERDRAINS 4"	(552) 27' - PIPE UNDERDRAINS 4"	
				(548) 12" SS, CL. A, T-2 32' @ 1.00%, TBF = 4.9 CY	(553) 12" SS, CL. A, T-1 20' @ 0.44%, TBF = 0.0 CY	



NOTES:  
1. SEE SHEET NO. 209 FOR CORRESPONDING PROFILE

REVISIONS	
NAME	DATE

PROPOSED U.S. ROUTE 30

ILLINOIS DEPARTMENT OF TRANSPORTATION

U.S. ROUTE 30  
DRAINAGE AND UTILITY PLANS

STATION 584+00 TO STATION 599+00

SCALE IN FEET

DATE 6/11/2010

DRAWN BY DJK  
CHECKED BY JRV