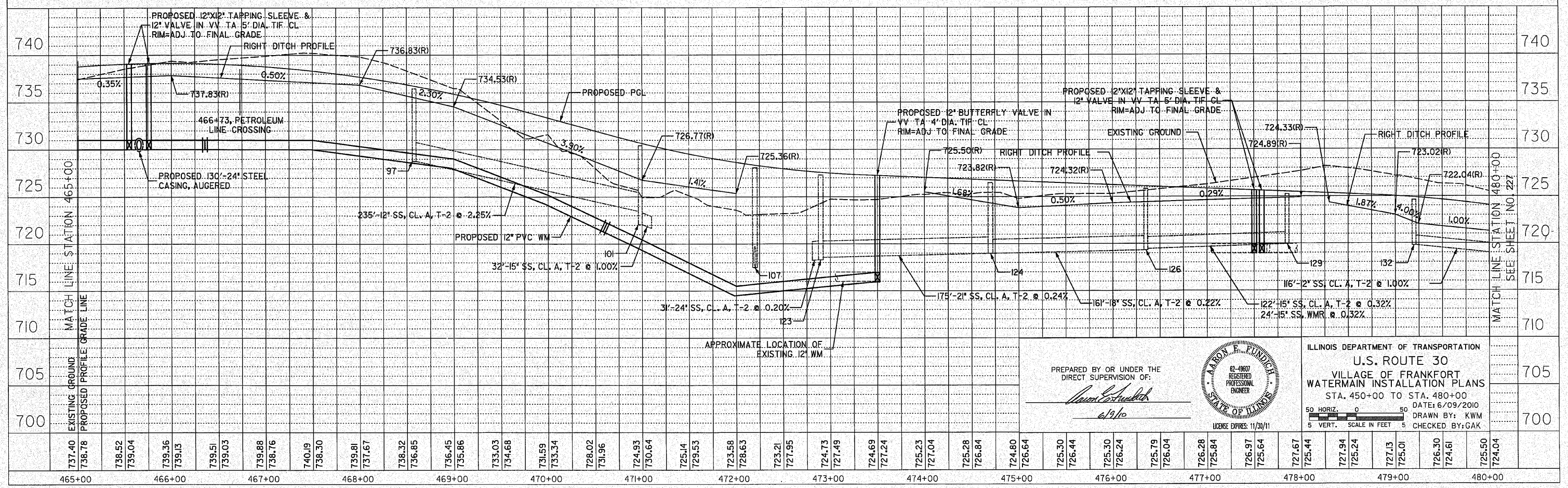
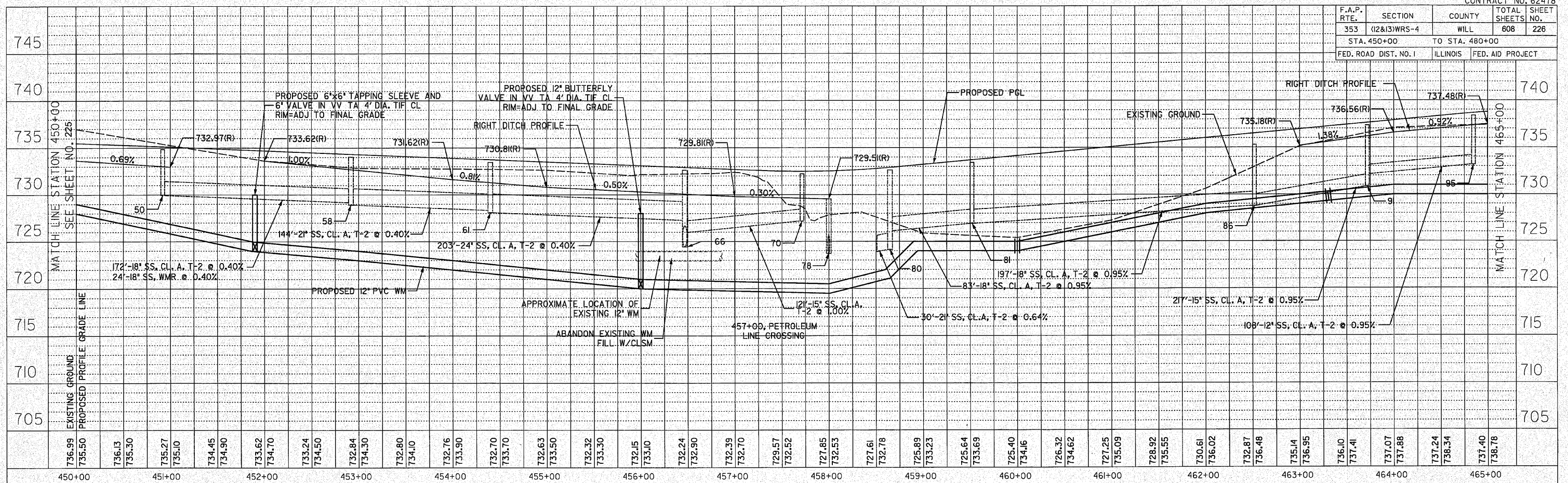


F.A.P. RTE.	SECTION	COUNTY	TOTAL SHEETS	SHEET NO.
353	(12&13)WRS-4	WILL	608	226
STA. 450+00		TO STA. 480+00		
FED. ROAD DIST. NO. 1		ILLINOIS		FED. AID PROJECT



PREPARED BY OR UNDER THE DIRECT SUPERVISION OF:
David C. Schubert
 6/9/10

ILLINOIS DEPARTMENT OF TRANSPORTATION
 U.S. ROUTE 30
 VILLAGE OF FRANKFORT
 WATERMAIN INSTALLATION PLANS
 STA. 450+00 TO STA. 480+00
 DATE: 6/09/2010
 DRAWN BY: KWM
 CHECKED BY: GAK

62-0907 REGISTERED PROFESSIONAL ENGINEER
 STATE OF ILLINOIS
 LICENSE EXPIRES: 11/30/11

50 HORIZ. SCALE IN FEET
 5 VERT. SCALE IN FEET