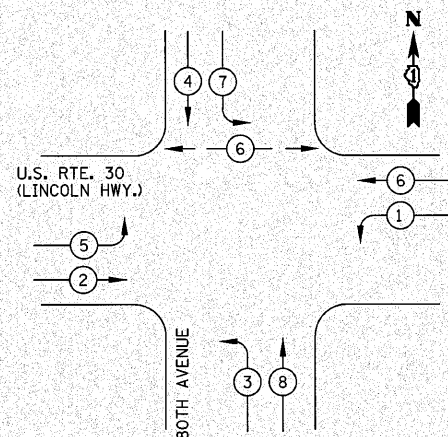
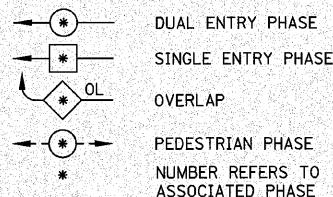


F.A.P. RTE.	SECTION	COUNTY	TOTAL SHEETS	SHEET NO.
353	(12&13)WRS-4	WILL/COOK	608	375
STA.		TO STA.		
FED. ROAD DIST. NO. 1 ILLINOIS		FED. AID PROJECT		
CONTRACT NO. 62478				

PROPOSED CONTROLLER SEQUENCE

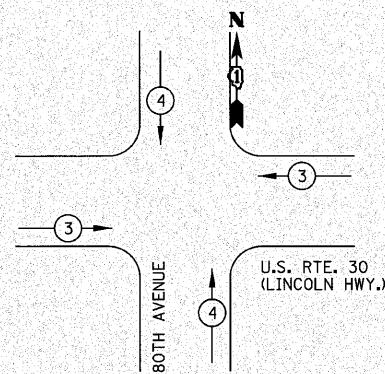


LEGEND



PROPOSED PHASE DESIGNATION DIAGRAM

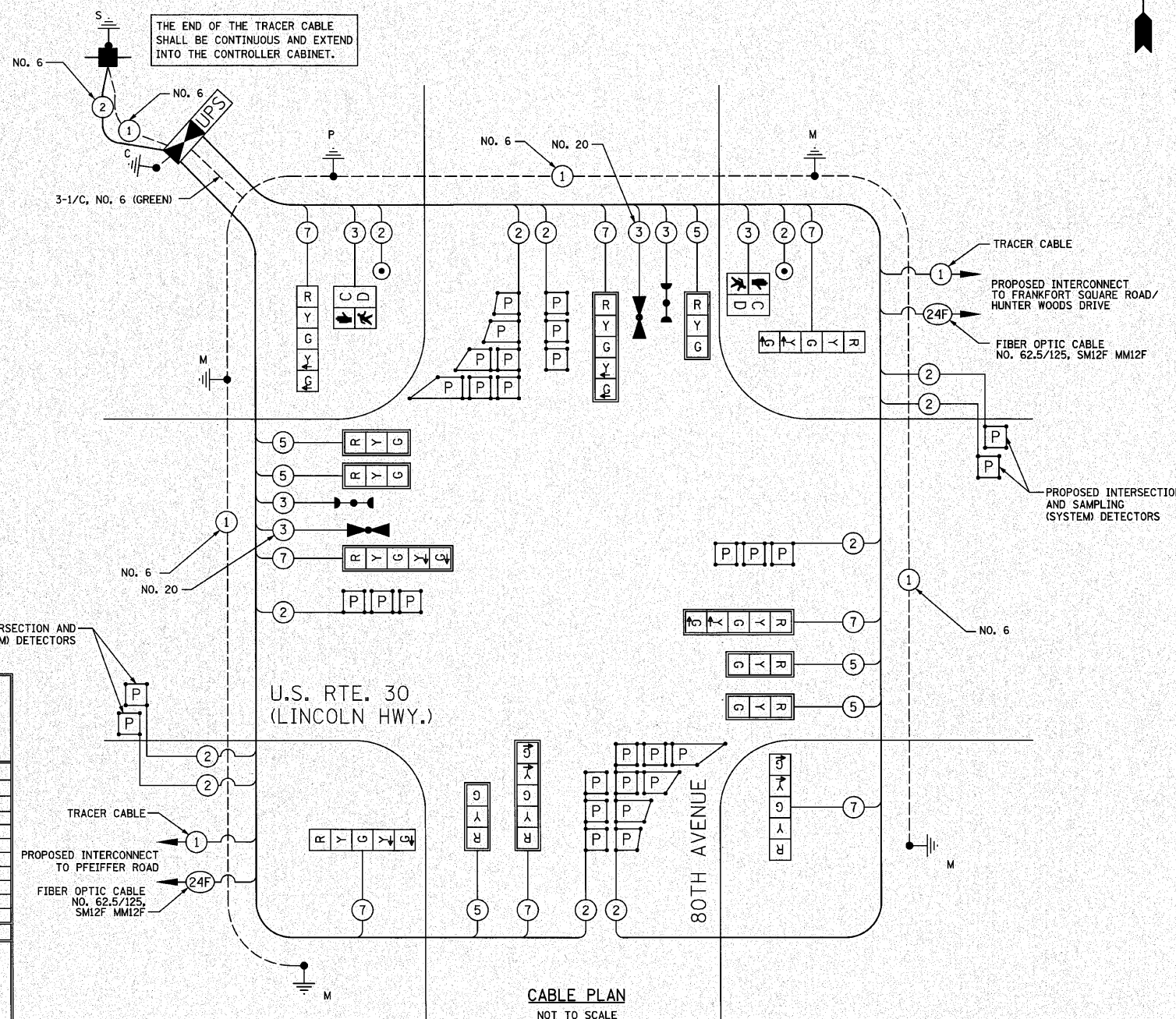
PROPOSED EMERGENCY VEHICLE PREEMPTION SEQUENCE



PROPOSED EMERGENCY VEHICLE PREEMPTORS		
EMERGENCY VEHICLE PREEMPTOR	3	4
MOVEMENT	←	→

SCHEDULE OF QUANTITIES

PAY ITEM	UNIT	QUANTITY
SIGN PANEL - TYPE 1	SQ FT	12
SIGN PANEL - TYPE 2	SQ FT	30
CONDUIT IN TRENCH, 2" DIA., GALVANIZED STEEL	FOOT	451
CONDUIT IN TRENCH, 2 1/2" DIA., GALVANIZED STEEL	FOOT	10
CONDUIT IN TRENCH, 3" DIA., GALVANIZED STEEL	FOOT	33
CONDUIT IN TRENCH, 4" DIA., GALVANIZED STEEL	FOOT	56
CONDUIT PUSHED, 2" DIA., GALVANIZED STEEL	FOOT	328
CONDUIT PUSHED, 4" DIA., GALVANIZED STEEL	FOOT	455
HANDHOLE	EACH	4
HEAVY-DUTY HANDHOLE	EACH	4
DOUBLE HANDHOLE	EACH	2
TRENCH AND BACKFILL FOR ELECTRICAL WORK	FOOT	524
FULL-ACTUATED CONTROLLER AND TYPE IV CABINET, SPECIAL	EACH	1
TRANSCEIVER-FIBER OPTIC	EACH	1
ELECTRIC CABLE IN CONDUIT, SIGNAL NO. 14 2C	FOOT	210
ELECTRIC CABLE IN CONDUIT, SIGNAL NO. 14 3C	FOOT	556
ELECTRIC CABLE IN CONDUIT, SIGNAL NO. 14 5C	FOOT	1319
ELECTRIC CABLE IN CONDUIT, SIGNAL NO. 14 7C	FOOT	1648
ELECTRIC CABLE IN CONDUIT, LEAD-IN, NO. 14 1 PAIR	FOOT	2579
ELECTRIC CABLE IN CONDUIT, SERVICE NO. 6 2C	FOOT	36
TRAFFIC SIGNAL POST, GALVANIZED STEEL 16 FT.	EACH	1
STEEL MAST ARM ASSEMBLY AND POLE, 48 FT.	EACH	1
STEEL MAST ARM ASSEMBLY AND POLE, 50 FT.	EACH	1
STEEL MAST ARM ASSEMBLY AND POLE, 58 FT.	EACH	1
STEEL MAST ARM ASSEMBLY AND POLE, 60 FT.	EACH	1
CONCRETE FOUNDATION, TYPE A	FOOT	4
CONCRETE FOUNDATION, TYPE C	FOOT	4
CONCRETE FOUNDATION, TYPE E 36-INCH DIAMETER	FOOT	28
CONCRETE FOUNDATION, TYPE E 42-INCH DIAMETER	FOOT	42
SIGNAL HEAD, L.E.D., 1-FACE, 3-SECTION, MAST ARM MOUNTED	EACH	6
SIGNAL HEAD, L.E.D., 1-FACE, 5-SECTION, BRACKET MOUNTED	EACH	4
SIGNAL HEAD, L.E.D., 1-FACE, 5-SECTION, MAST ARM MOUNTED	EACH	4
PEDESTRIAN SIGNAL HEAD, L.E.D., 1-FACE, BRACKET MOUNTED WITH COUNTDOWN TIMER	EACH	2
TRAFFIC SIGNAL BACKPLATE, LOUVERED, ALUMINUM	EACH	10
INDUCTIVE LOOP DETECTOR	EACH	10
* LIGHT DETECTOR	EACH	2
* LIGHT DETECTOR AMPLIFIER	EACH	1
PEDESTRIAN PUSH-BUTTON	EACH	2
PREFORMED DETECTOR LOOP	FOOT	1065
SERVICE INSTALLATION-POLE MOUNTED	EACH	1
UNINTERRUPTIBLE POWER SUPPLY	EACH	1
ELECTRIC CABLE IN CONDUIT, GROUNDING, NO. 6 1C	FOOT	693
* ELECTRIC CABLE IN CONDUIT, NO. 20 3C, TWISTED, SHIELDED	FOOT	332
* 100% COST TO FRANKFORT FIRE PROTECTION DISTRICT		



CABLE PLAN
NOT TO SCALE

I.D.O.T. TRAFFIC SIGNAL INSTALLATION ELECTRICAL SERVICE REQUIREMENTS				TOTAL WATTAGE
TYPE	NO. LAMPS	WATTAGE INCAND.	% OPERATION	
SIGNAL (RED)	14	17	0.50	119
(YELLOW)	14	25	0.25	88
(GREEN)	14	15	0.25	53
ARROW	16	12	0.10	20
PED SIGNAL	2	25	1.00	50
CONTROLLER	1	100	1.00	100
ILLUM. SIGN			0.05	
TOTAL =				430
ENERGY COSTS TO: ILLINOIS DEPARTMENT OF TRANSPORTATION 201 W. CENTER CT. SCHAUMBURG, IL 60196				
ENERGY SUPPLY: CONTACT: MARK ANDERSON PHONE: 815-724-5988 COMPANY: COM. ED.				

NOTE:
THE TRAFFIC SIGNAL CONTROLLER EQUIPMENT FOR THIS PROJECT SHALL BE "ECONOLITE" TO MATCH THE EXISTING ADJACENT SYSTEM.

REVISIONS	
NAME	DATE

ILLINOIS DEPARTMENT OF TRANSPORTATION
CABLE PLAN,
PHASE DESIGNATION DIAGRAM,
EMERGENCY PREEMPTION SEQUENCE AND
SCHEDULE OF QUANTITIES
U.S. RTE. 30 (LINCOLN HWY.) &
BOTH AVENUE
NOT TO SCALE
DATE 7/29/2010
DRAWN BY OJT
DESIGNED BY BRD
CHECKED BY JUE