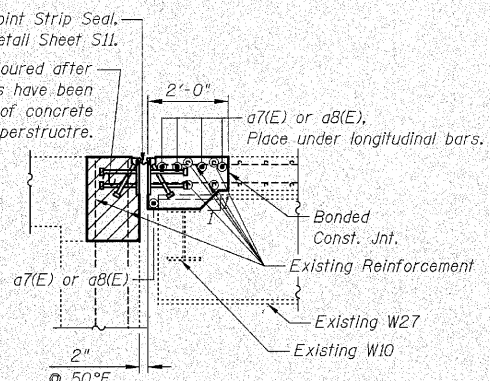
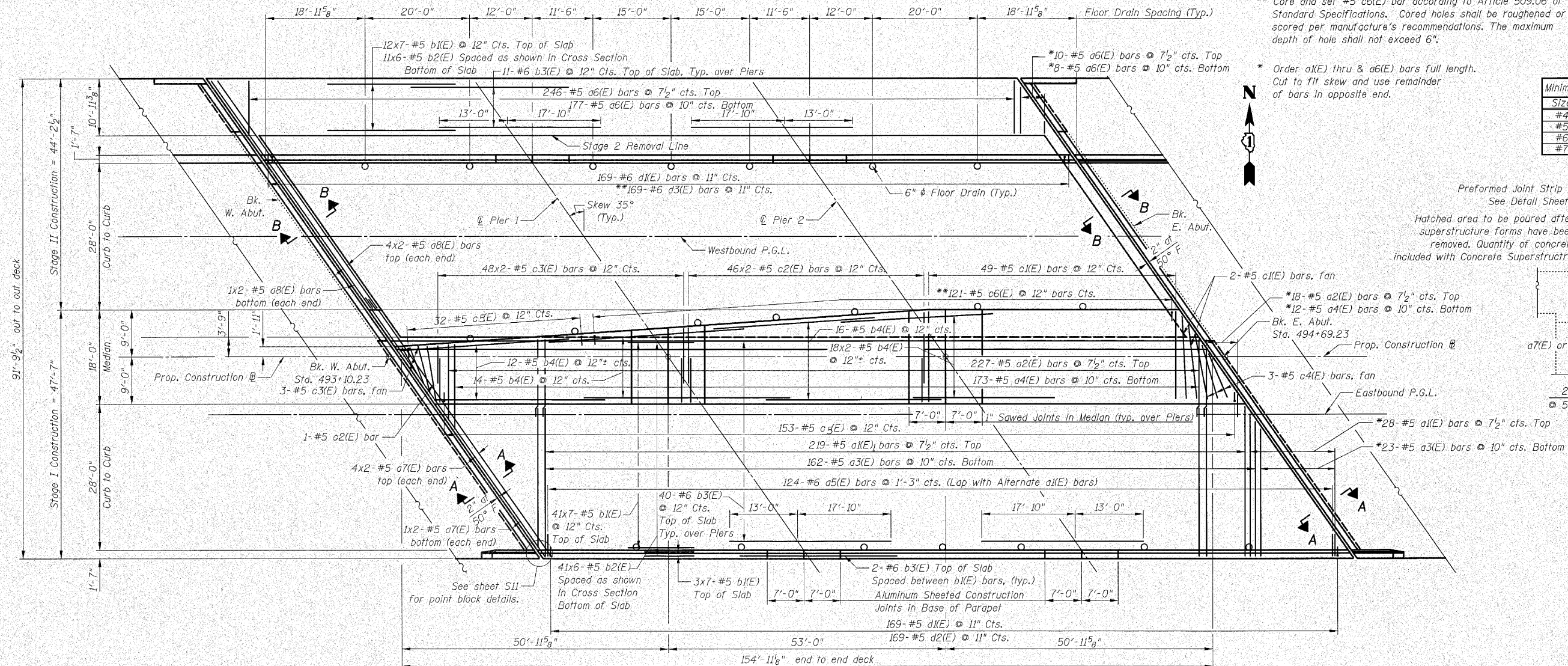


Contract No. 62478

** Core and set #5 c6(E) bar according to Article 509.06 of the Standard Specifications. Cored holes shall be roughened or scored per manufacture's recommendations. The maximum depth of hole shall not exceed 6".

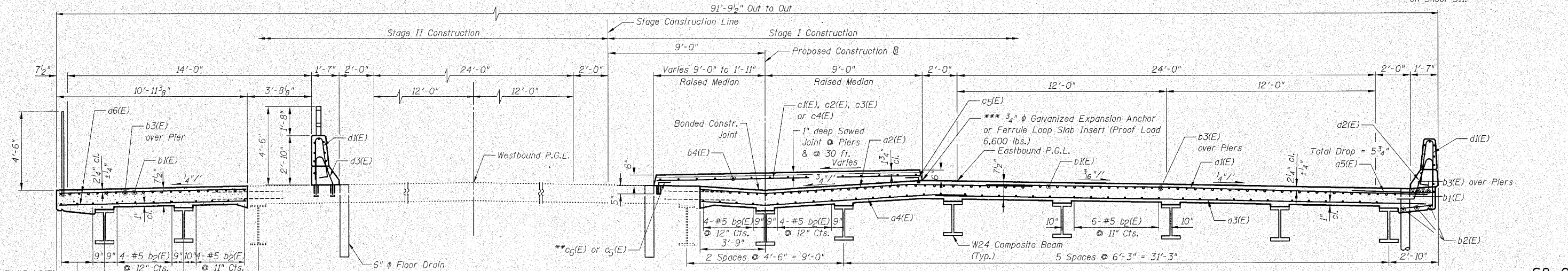
* Order a1(E) thru & a6(E) bars full length. Cut to fit skew and use remainder of bars in opposite end.

Size	Lap
#4	1'-8"
#5	2'-2"
#6	2'-7"
#7	3'-5"

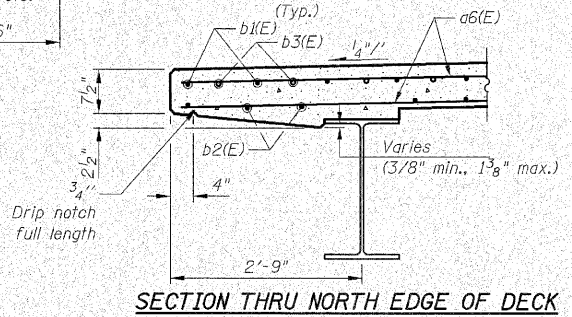


SECTION B-B

- Notes:**
1. See Sheet S9 for superstructure details and Bill of Material.
 2. Reinforcement bars designated (E) shall be epoxy coated.
 3. Bars indicated thus 20 x 3-#5 etc. Indicates 20 lines of bars with 3 lengths per line.
 4. See Sheet S9 for parapet reinforcement.
 5. See Sheet S9 for Section A-A.
 6. Dimensions are based on a Rolled Rail Strip Seal Joint. If the Contractor elects to use the Welded Rail Strip Seal Joint, deck dimensions may require adjustments to satisfy the details on Sheet S11.



CROSS SECTION
(Looking East)



SECTION THRU NORTH EDGE OF DECK

S8 OF S26

STATE OF ILLINOIS
DEPARTMENT OF TRANSPORTATION
DECK PLAN & SECTION

U.S. RTE. 30 OVER HICKORY CREEK
STATION 493+89.73
STRUCTURE NUMBER 099-0311

SCALE: DRAWN BY: C. Cooney
DATE: June 11, 2010 CHECKED BY: G. Hatlestad

*** The cost of Expansion Anchors/Insert is included in the cost of Reinforcement Bars, Epoxy Coated.