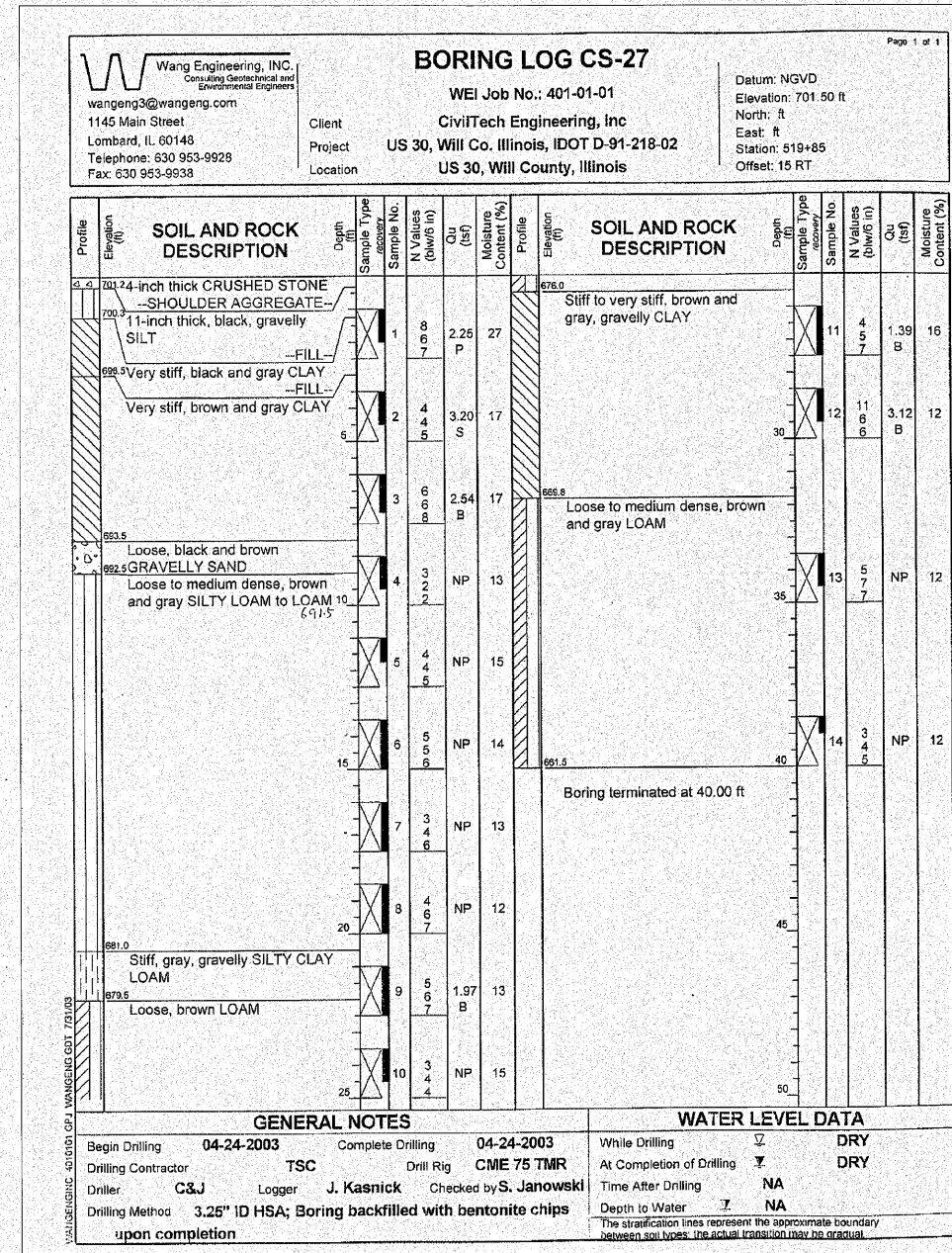
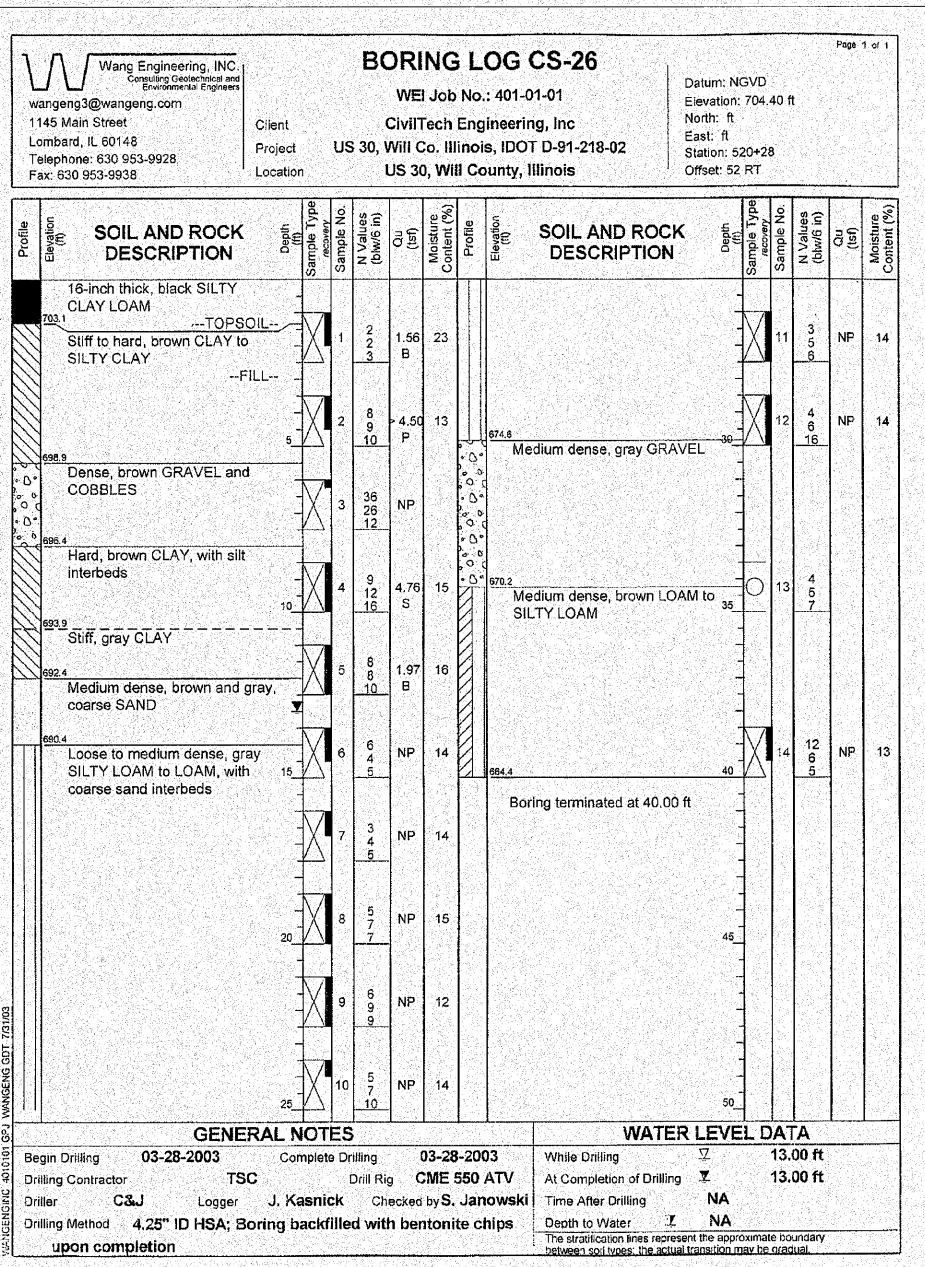


STATE OF ILLINOIS  
DEPARTMENT OF TRANSPORTATION



DESIGNED	
CHECKED	
DRAWN	ASJ
CHECKED	SPK

**INFRASTRUCTURE ENGINEERING** | INCORPORATED  
33 West Monroe | Suite 1540 | Chicago, IL 60603  
P 312.425.9560 | F 312.425.9564 | www.infrastructure-eng.com

SOIL BORING LOGS CS-26 & CS-27  
U.S. ROUTE 30 AND HILLSIDE ROAD OVER  
TRIBUTARY TO HICKORY CREEK  
F.A.P. ROUTE 353 SEC. (12&13)WRS-4  
WILL COUNTY  
STATION 520+20.00  
STRUCTURE NO. 099-C027

P:\P\_03\_15205\Dr-awings\Final\_Design\520+20.00\0-D-awings\Sheet\swl\520-sht125B.dgn 6/9/2010 4:07:38 PM