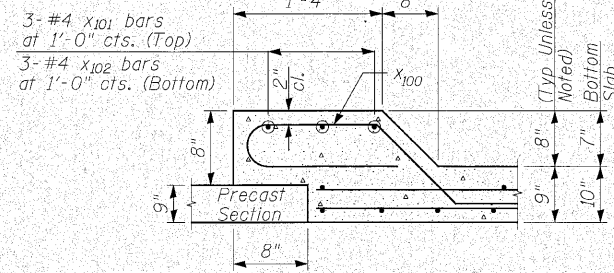
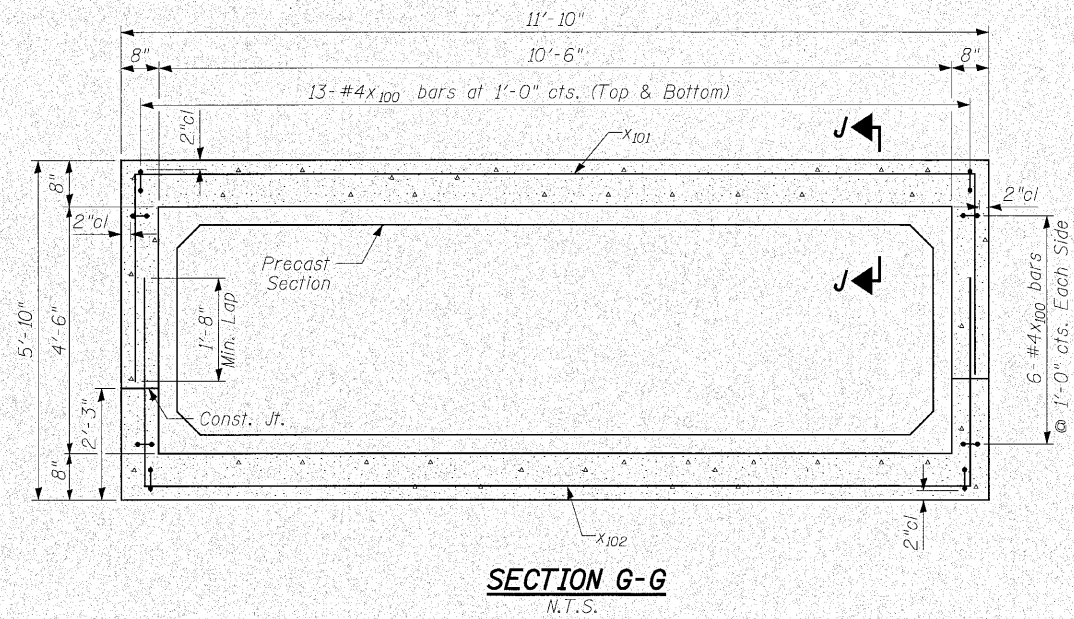
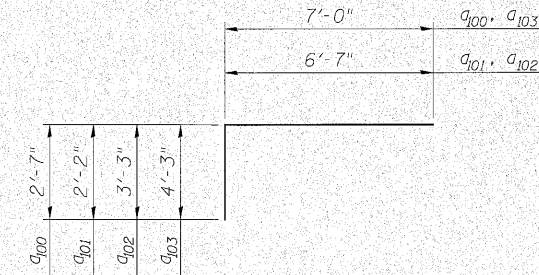


STATE OF ILLINOIS  
DEPARTMENT OF TRANSPORTATION

ROUTE NO.	SECTION	COUNTY	TOTAL SHEETS	SHEET NO.
353	(12&13)WRS-4	Will	608	488
8 SHEETS				
FED. ROAD DIST. NO. 7	ILLINOIS	FED. AID PROJECT	Contract No. 62478	



**SECTION J-J**  
N.T.S.

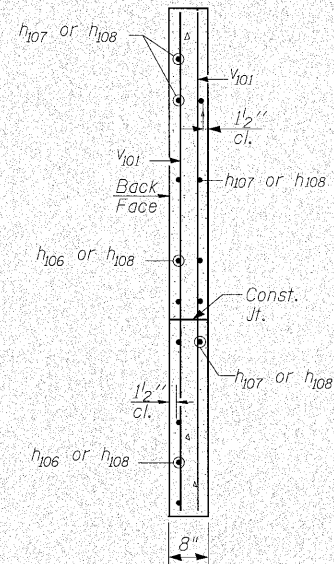


**BARS a<sub>100</sub> • a<sub>101</sub> • a<sub>102</sub> & a<sub>103</sub>**

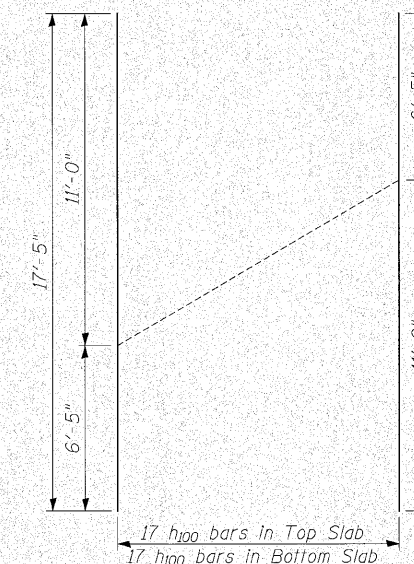
**BILL OF MATERIAL**  
(For One End Section)

Bar	No.	Size	Length	Shape
a <sub>100</sub>	40	#6	9'-7"	□
a <sub>101</sub>	40	#6	8'-9"	□
a <sub>102</sub>	40	#6	9'-10"	□
a <sub>103</sub>	40	#6	11'-3"	□
d <sub>100</sub>	10	#4	4'-6"	□
h <sub>100</sub>	34	#5	17'-5"	□
h <sub>101</sub>	10	#4	6'-5"	□
h <sub>102</sub>	10	#4	11'-0"	□
h <sub>103</sub>	1	#4	11'-6"	□
h <sub>105</sub>	2	#6	9'-10"	□
h <sub>106</sub>	7	#5	10'-6"	□
h <sub>107</sub>	7	#5	8'-0"	□
h <sub>108</sub>	14	#4	8'-0"	□
v <sub>101</sub>	8	#4	7'-2"	□
x <sub>100</sub>	38	#4	5'-8"	□
x <sub>101</sub>	3	#4	17'-11"	□
x <sub>102</sub>	3	#4	19'-3"	□
Concrete Structures		Cu. Yd.	11.6	
Reinforcement Bars		Pound	3,640	

**Note:**  
Quantity of Concrete Structures and Reinforcement Bars is shown for information only.

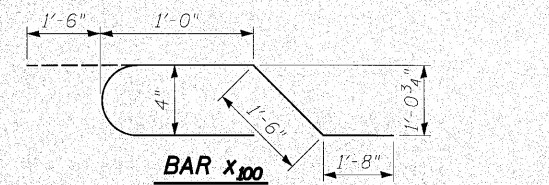


**SECTION H-H**

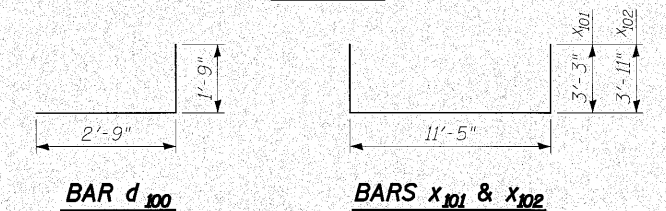


**FIELD CUTTING DIAGRAM\***

\*Order bars full length. Cut to fit as shown and place in the bottom of the slab. Use remainder of bars in the top of the slab.

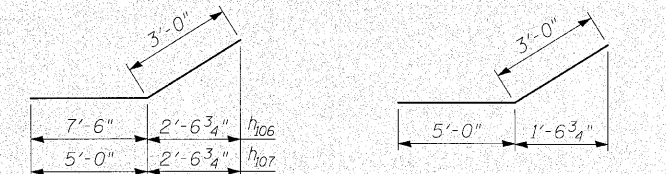


**BAR X<sub>100</sub>**



**BAR d<sub>100</sub>**

**BARS X<sub>101</sub> & X<sub>102</sub>**



**BARS h<sub>106</sub> & h<sub>107</sub>**

**BAR h<sub>108</sub>**

DESIGNED	SST
CHECKED	SPK
DRAWN	BID
CHECKED	SST



**INFRASTRUCTURE ENGINEERING** INCORPORATED  
33 West Monroe | Suite 1540 | Chicago, IL 60603  
P 312.425.9580 | F 312.425.9584 | www.infrastructure-eng.com

**SECTIONS & DETAILS**  
**HARLEM AVENUE OVER**  
**DRAINAGE DITCH**  
**F.A.P. ROUTE 353 - SEC. (12&13)WRS-4**  
**WILL COUNTY**  
**STATION 991+37.00**  
**STRUCTURE NO. 099-C028**

P:\P-03\1505\Drawings\Final Design\991+37.00\Drawings\Sheets\culv991-sh104.dgn 6/9/2010 2:31:05 PM