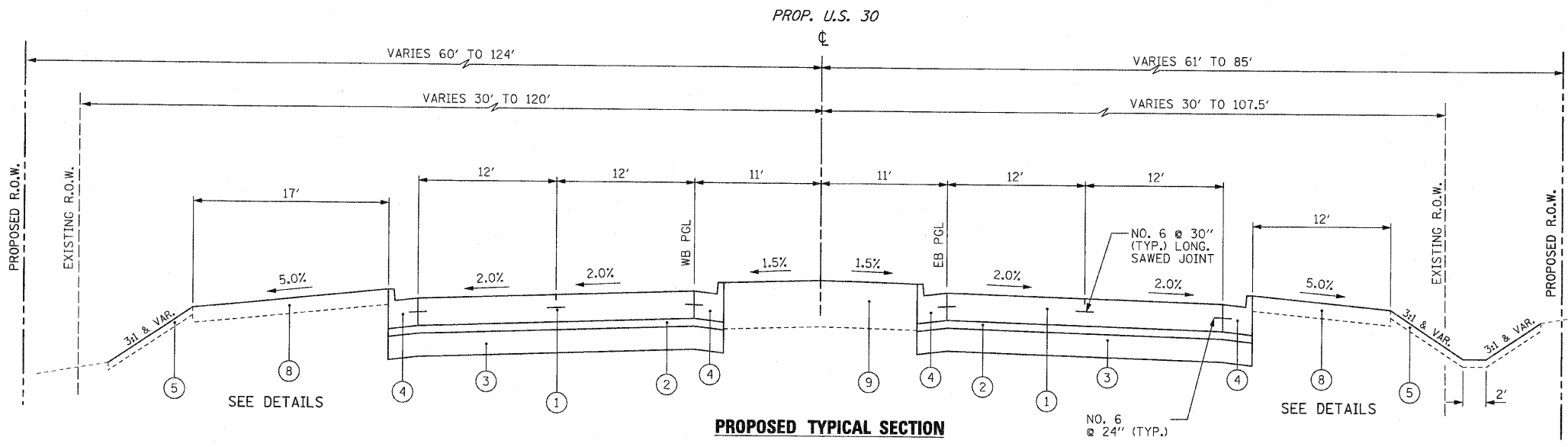


F.A.P. RTE.	SECTION	COUNTY	TOTAL SHEETS	SHEET NO.
353	(12&13)WRS-3	WILL	1235	30
STA.	TO STA.		CONTRACT NO. 62479	
FED. AID DIST. NO.	ILLINOIS	FED. AID PROJECT		

PROPOSED LEGEND

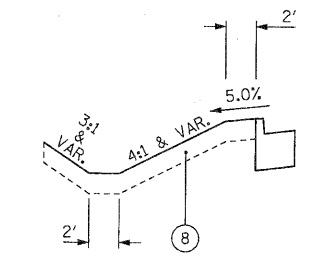
- ① PORTLAND CEMENT CONCRETE PAVEMENT, 9 3/4" (JOINTED)
- ② STABILIZED SUBBASE - HOT MIX ASPHALT, 4 1/2"
- ③ AGGREGATE SUBGRADE 12", SPECIAL
- ④ COMBINATION CONCRETE CURB & GUTTER, TYPE B-6.24
- ⑤ TOPSOIL FURNISH AND PLACE, 4"
- ⑥ PORTLAND CEMENT CONCRETE SIDEWALK, 5"
- ⑦ HOT-MIX ASPHALT SURFACE COURSE, MIX "C", N50, 3"
- ⑧ TOPSOIL FURNISH AND PLACE, 8"
- ⑨ TOPSOIL FURNISH AND PLACE, 24"
- ⑩ CONCRETE MEDIAN, TYPE SB-6.24 (MODIFIED)
- ⑪ HOT-MIX ASPHALT PAVEMENT (FULL DEPTH), 9"
- ⑫ AGGREGATE SUBGRADE, 12"
- ⑬ LEVELING BINDER, (MACHINE METHOD), N50, 3/4"
- ⑭ HOT-MIX ASPHALT SURFACE COURSE, MIX "C", N50, 1 1/2"
- ⑮ COMBINATION CONCRETE CURB & GUTTER, TYPE B-6.12
- ⑯ HOT-MIX ASPHALT BINDER COURSE, IL-19.0, N50, 2 1/4"
- ⑰ HOT-MIX ASPHALT BINDER COURSE, IL-19.0, N50, 6 3/4"
- ⑱ HOT-MIX ASPHALT SURFACE COURSE, MIX "D", N50, 1 1/2"
- ⑲ HOT-MIX ASPHALT BASE COURSE WIDENING, 6 3/4"
- ⑳ AGGREGATE BASE COURSE, TYPE B 6"
- ㉑ HOT-MIX ASPHALT SURFACE COURSE, MIX "C", N50, 2"
- ㉒ AGGREGATE SHOULDERS, TYPE B 6"



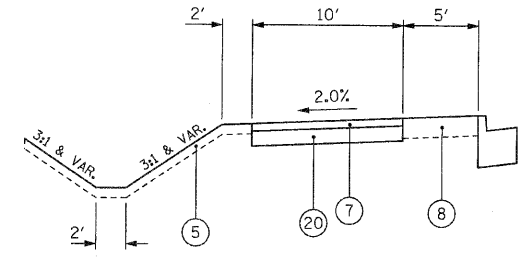
**PROPOSED TYPICAL SECTION
U.S. RTE. 30**

STA. 190+59.00 TO STA. 191+98.35	STA. 274+10.27 TO STA. 281+67.12	STA. 377+03.85 TO STA. 378+56.39
STA. 203+28.33 TO STA. 210+00.00	STA. 291+85.22 TO STA. 291+94.89	STA. 384+29.20 TO STA. 384+51.00
• STA. 210+00.00 TO STA. 212+34.70	STA. 323+62.05 TO STA. 324+25.26	STA. 403+19.23 TO STA. 407+35.15
STA. 250+52.99 TO STA. 253+32.56		
STA. 263+36.36 TO STA. 268+34.27		

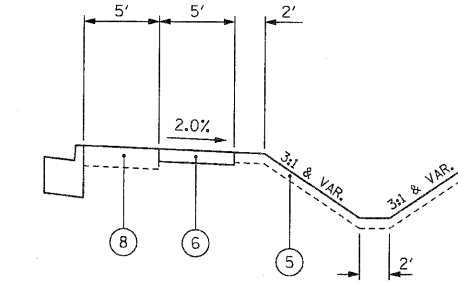
NOTE:
• MEDIAN WIDENS FROM 22' TO 30'



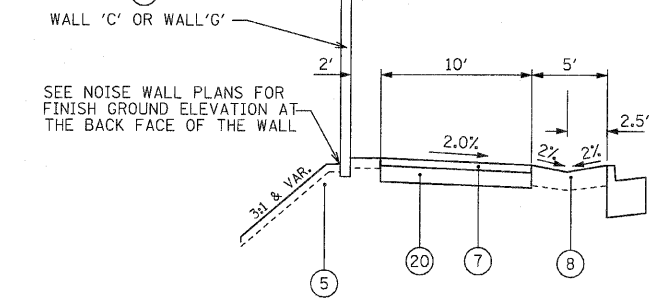
DETAIL "A"
STA. 190+59.00 TO STA. 191+98.35



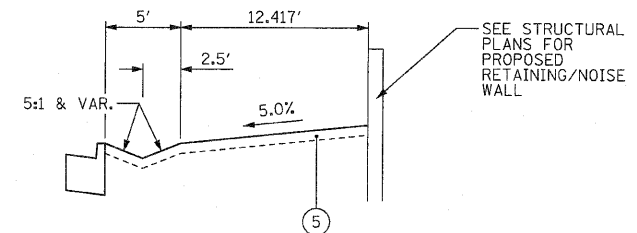
DETAIL "B"
STA. 249+78.00 TO STA. 253+32.56
STA. 291+80.77 TO STA. 291+99.75
STA. 313+35.82 TO STA. 313+70.96
STA. 190+59.00 TO STA. 191+98.35 (RT)
STA. 403+04.07 TO STA. 408+00.00 (RT)



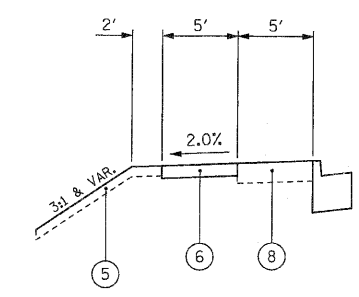
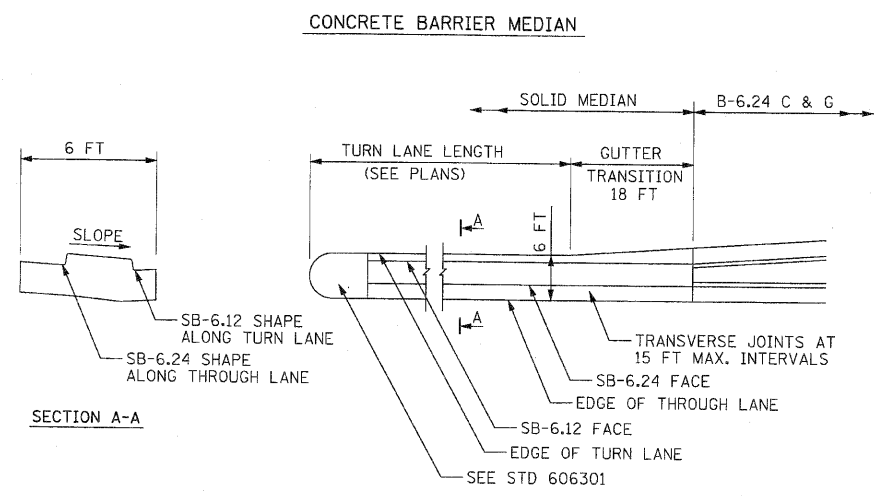
DETAIL "C"
STA. 323+62.30 TO STA. 324+25.26
STA. 263+36.36 TO STA. 268+34.27
STA. 274+10.27 TO STA. 281+67.12
STA. 291+85.22 TO STA. 291+94.89



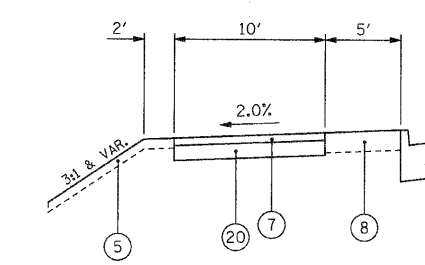
DETAIL "G"
STA. 274+00.00 TO STA. 286+00 (LT)
STA. 372+67 TO STA. 390+00 (LT)



DETAIL "F"
STA. 203+08.49 TO STA. 212+15.00



DETAIL "D"
STA. 403+04.07 TO STA. 408+00.00



DETAIL "E"
STA. 263+36.36 TO STA. 268+49.22
STA. 297+00.00 TO STA. 300+20.20

REVISIONS		ILLINOIS DEPARTMENT OF TRANSPORTATION
NAME	DATE	
		TYPICAL SECTIONS PROPOSED U.S. RTE. 30 (LINCOLN HWY) SCALE : 1" = NTS DRAWN BY : BEC DATE : 10/12/2010 CHECKED BY : GB