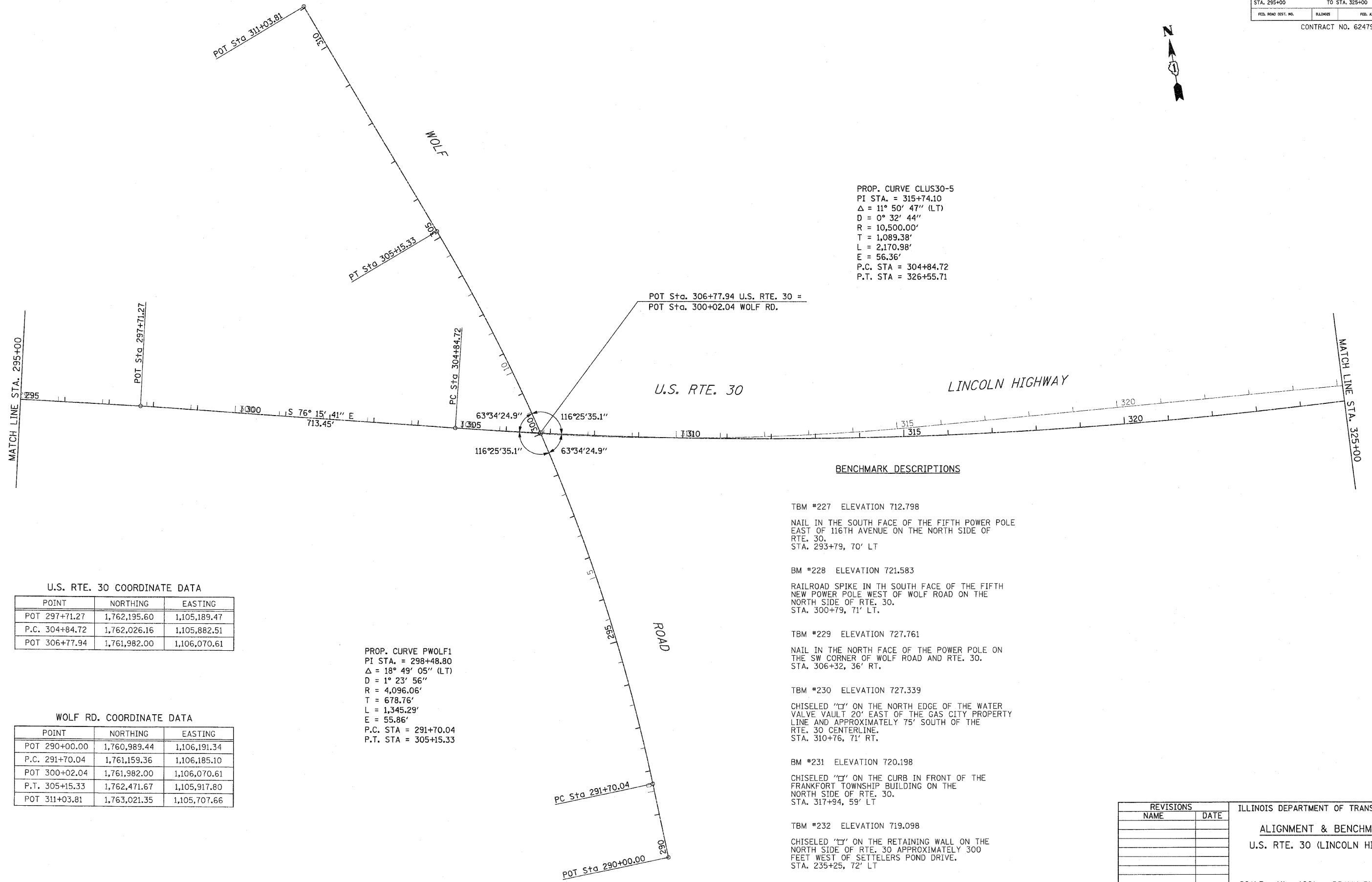


F.A.P. RTE.	SECTION	COUNTY	TOTAL SHEETS	SHEET NO.
353	(12&13)WRS-3	WILL	1235	62
STA. 295+00		TO STA. 325+00		
FED. ROAD DIST. NO.	ILLINOIS	FED. AID PROJECT		

CONTRACT NO. 62479



PROP. CURVE CLUS30-5  
 PI STA. = 315+74.10  
 $\Delta$  = 11° 50' 47" (LT)  
 D = 0° 32' 44"  
 R = 10,500.00'  
 T = 1,089.38'  
 L = 2,170.98'  
 E = 56.36'  
 P.C. STA = 304+84.72  
 P.T. STA = 326+55.71

POT Sta. 306+77.94 U.S. RTE. 30 =  
 POT Sta. 300+02.04 WOLF RD.

MATCH LINE STA. 295+00  
 POT Sta. 297+71.27  
 POT Sta. 304+84.72  
 PC Sta. 304+84.72

MATCH LINE STA. 325+00

**BENCHMARK DESCRIPTIONS**

- TBM #227 ELEVATION 712.798  
 NAIL IN THE SOUTH FACE OF THE FIFTH POWER POLE EAST OF 116TH AVENUE ON THE NORTH SIDE OF RTE. 30.  
 STA. 293+79, 70' LT
- BM #228 ELEVATION 721.583  
 RAILROAD SPIKE IN TH SOUTH FACE OF THE FIFTH NEW POWER POLE WEST OF WOLF ROAD ON THE NORTH SIDE OF RTE. 30.  
 STA. 300+79, 71' LT.
- TBM #229 ELEVATION 727.761  
 NAIL IN THE NORTH FACE OF THE POWER POLE ON THE SW CORNER OF WOLF ROAD AND RTE. 30.  
 STA. 306+32, 36' RT.
- TBM #230 ELEVATION 727.339  
 CHISELED "C" ON THE NORTH EDGE OF THE WATER VALVE VAULT 20' EAST OF THE GAS CITY PROPERTY LINE AND APPROXIMATELY 75' SOUTH OF THE RTE. 30 CENTERLINE.  
 STA. 310+76, 71' RT.
- BM #231 ELEVATION 720.198  
 CHISELED "C" ON THE CURB IN FRONT OF THE FRANKFORT TOWNSHIP BUILDING ON THE NORTH SIDE OF RTE. 30.  
 STA. 317+94, 59' LT
- TBM #232 ELEVATION 719.098  
 CHISELED "C" ON THE RETAINING WALL ON THE NORTH SIDE OF RTE. 30 APPROXIMATELY 300 FEET WEST OF SETTELERS POND DRIVE.  
 STA. 235+25, 72' LT

**U.S. RTE. 30 COORDINATE DATA**

POINT	NORTHING	EASTING
POT 297+71.27	1,762,195.60	1,105,189.47
P.C. 304+84.72	1,762,026.16	1,105,882.51
POT 306+77.94	1,761,982.00	1,106,070.61

**WOLF RD. COORDINATE DATA**

POINT	NORTHING	EASTING
POT 290+00.00	1,760,989.44	1,106,191.34
P.C. 291+70.04	1,761,159.36	1,106,185.10
POT 300+02.04	1,761,982.00	1,106,070.61
P.T. 305+15.33	1,762,471.67	1,105,917.80
POT 311+03.81	1,763,021.35	1,105,707.66

PROP. CURVE PWOLF1  
 PI STA. = 298+48.80  
 $\Delta$  = 18° 49' 05" (LT)  
 D = 1° 23' 56"  
 R = 4,096.06'  
 T = 678.76'  
 L = 1,345.29'  
 E = 55.86'  
 P.C. STA = 291+70.04  
 P.T. STA = 305+15.33

REVISIONS	
NAME	DATE

ILLINOIS DEPARTMENT OF TRANSPORTATION  
**ALIGNMENT & BENCHMARKS**  
 U.S. RTE. 30 (LINCOLN HIGHWAY)

SCALE : 1" = 100'  
 DATE : / /

DRAWN BY : BAE  
 CHECKED BY : CB