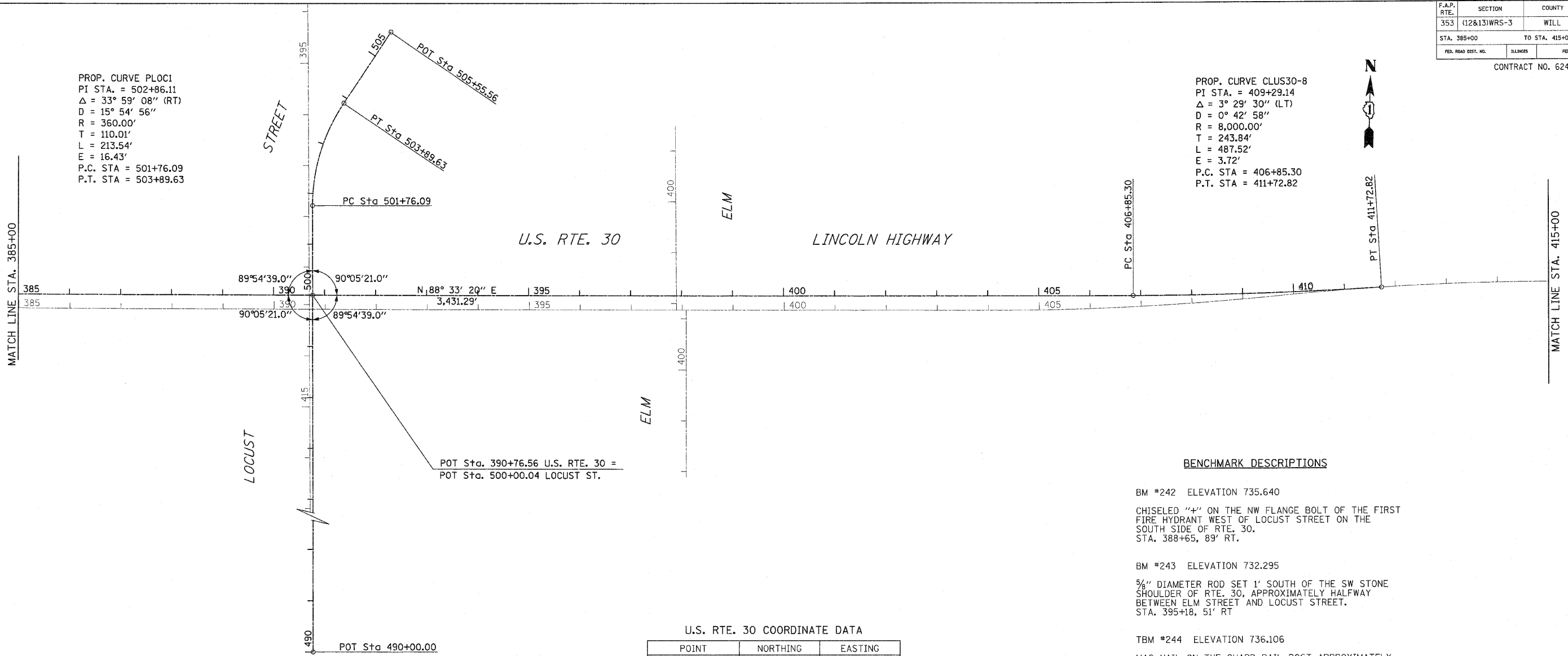


F.A.P. RTE.	SECTION	COUNTY	TOTAL SHEETS	SHEET NO.
353	(12&13)WRS-3	WILL	1235	64
STA. 385+00		TO STA. 415+00		
FED. ROAD DIST. NO.	DISTRICT	FED. AID PROJECT		

CONTRACT NO. 62479

PROP. CURVE PLOC1
 PI STA. = 502+86.11
 $\Delta = 33^\circ 59' 08''$ (RT)
 $D = 15^\circ 54' 56''$
 $R = 360.00'$
 $T = 110.01'$
 $L = 213.54'$
 $E = 16.43'$
 P.C. STA = 501+76.09
 P.T. STA = 503+89.63

PROP. CURVE CLUS30-8
 PI STA. = 409+29.14
 $\Delta = 3^\circ 29' 30''$ (LT)
 $D = 0^\circ 42' 58''$
 $R = 8,000.00'$
 $T = 243.84'$
 $L = 487.52'$
 $E = 3.72'$
 P.C. STA = 406+85.30
 P.T. STA = 411+72.82



BENCHMARK DESCRIPTIONS

- BM #242 ELEVATION 735.640
 CHISELED "4" ON THE NW FLANGE BOLT OF THE FIRST FIRE HYDRANT WEST OF LOCUST STREET ON THE SOUTH SIDE OF RTE. 30.
 STA. 388+65, 89' RT.
- BM #243 ELEVATION 732.295
 5/8" DIAMETER ROD SET 1' SOUTH OF THE SW STONE SHOULDER OF RTE. 30, APPROXIMATELY HALFWAY BETWEEN ELM STREET AND LOCUST STREET.
 STA. 395+18, 51' RT
- TBM #244 ELEVATION 736.106
 MAG NAIL ON THE GUARD RAIL POST APPROXIMATELY 200' EAST OF ELM STREET ON THE SOUTH SIDE OF RTE. 30.
 STA. 400+53, 51' RT
- BM #245 ELEVATION 735.534
 RAILROAD SPIKE IN THE SOUTH FACE OF THE POWER POLE OPPOSITE THE FIRST NATIONAL BANK BUILDING ON THE NORTH SIDE OF RTE. 30.
 (APPROXIMATELY 1000' WEST OF RTE.45).
 STA. 406+27, 71' LT.
- TBM #246 ELEVATION 728.423
 NAIL IN THE NORTH FACE OF THE THIRD POWER POLE WEST OF RTE. 45 ON THE SOUTH SIDE OF RTE. 30.
 STA. 412+64, 64' RT.

U.S. RTE. 30 COORDINATE DATA

POINT	NORTHING	EASTING
POT 390+76.56	1,763,104.49	1,114,167.78
P.C. 406+85.30	1,763,145.04	1,115,776.01
P.T. 411+72.82	1,763,172.17	1,116,262.70

LOCUST ST. COORDINATE DATA

POINT	NORTHING	EASTING
POT 490+00.00	1,762,104.81	1,114,194.54
POT 500+00.04	1,763,104.49	1,114,167.78
P.C. 501+76.09	1,763,280.48	1,114,163.07
P.T. 503+89.63	1,763,483.29	1,114,219.15
POT 505+55.56	1,763,623.31	1,114,308.18

REVISIONS		ILLINOIS DEPARTMENT OF TRANSPORTATION
NAME	DATE	
		ALIGNMENT & BENCHMARKS U.S. RTE. 30 (LINCOLN HIGHWAY)

SCALE : 1" = 100'
 DATE : / /
 DRAWN BY : BAE
 CHECKED BY : GB