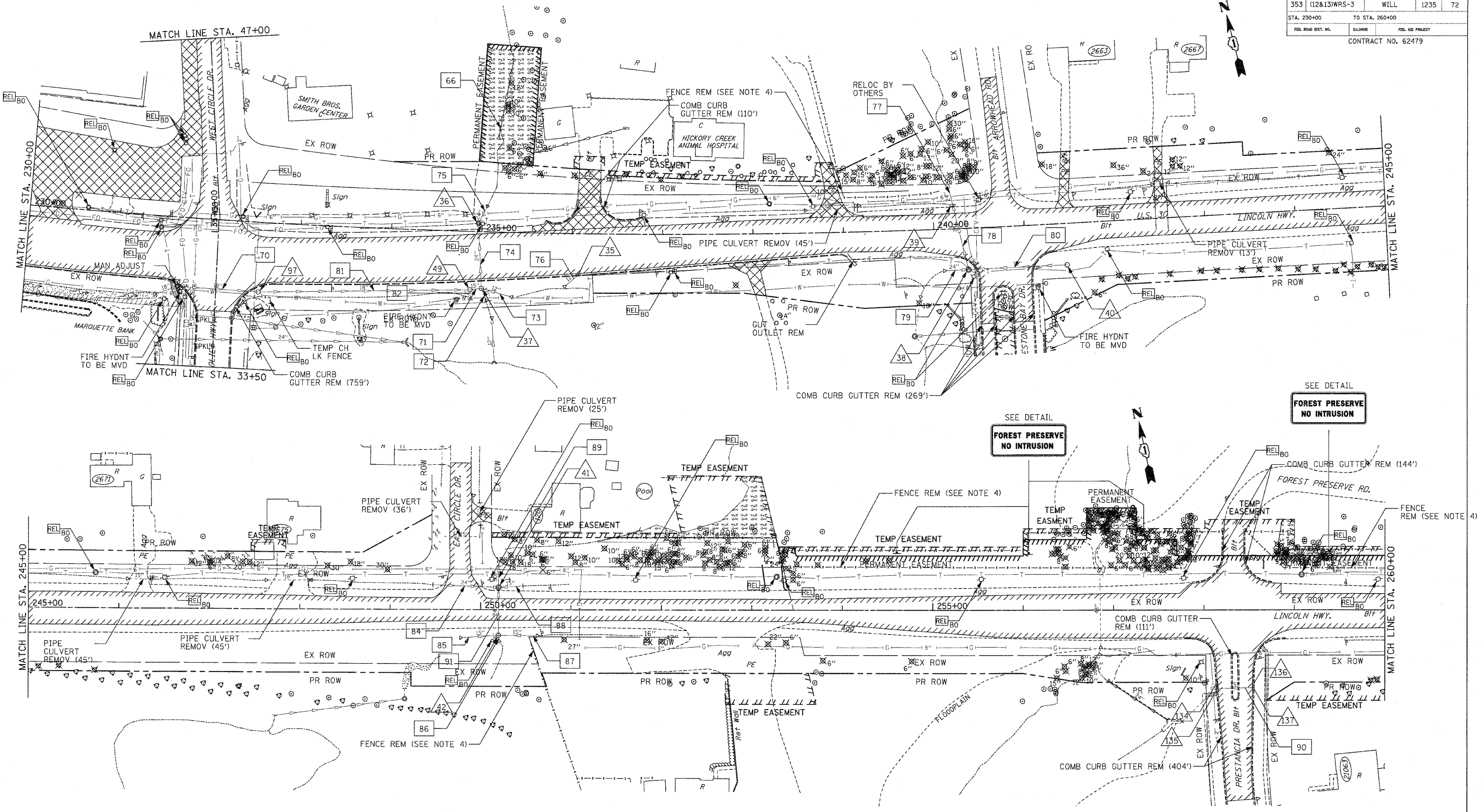


F.A.P. RTE.	SECTION	COUNTY	TOTAL SHEETS	SHEET NO
353	(12&13)WRS-3	WILL	1235	72
STA. 230+00		TO STA. 260+00		
FED. ROAD DIST. NO.	ILLINOIS	FED. AID PROJECT		
CONTRACT NO. 62479				



- NOTES:
1. FOR REMOVAL NOTES SEE FIRST PAGE REMOVAL PLANS.
 2. FOR REMOVAL LEGEND SEE FIRST PAGE REMOVAL PLANS.

SEE DETAIL
**FOREST PRESERVE
 NO INTRUSION**

REVISIONS		ILLINOIS DEPARTMENT OF TRANSPORTATION <u>REMOVAL PLANS</u> U.S. RTE. 30 (LINCOLN HIGHWAY) STA. 230+00 TO STA. 260+00 SCALE: 1" = 50' DATE: / /
NAME	DATE	
		DRAWN BY: BAE CHECKED BY: GB