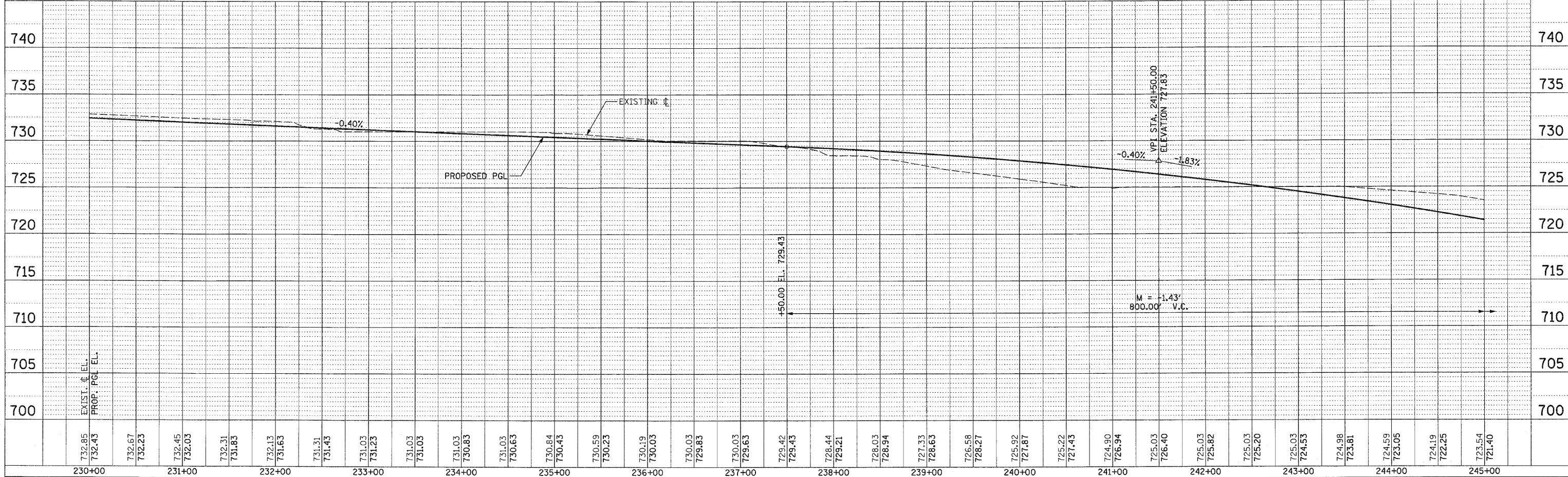
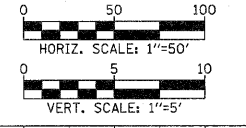
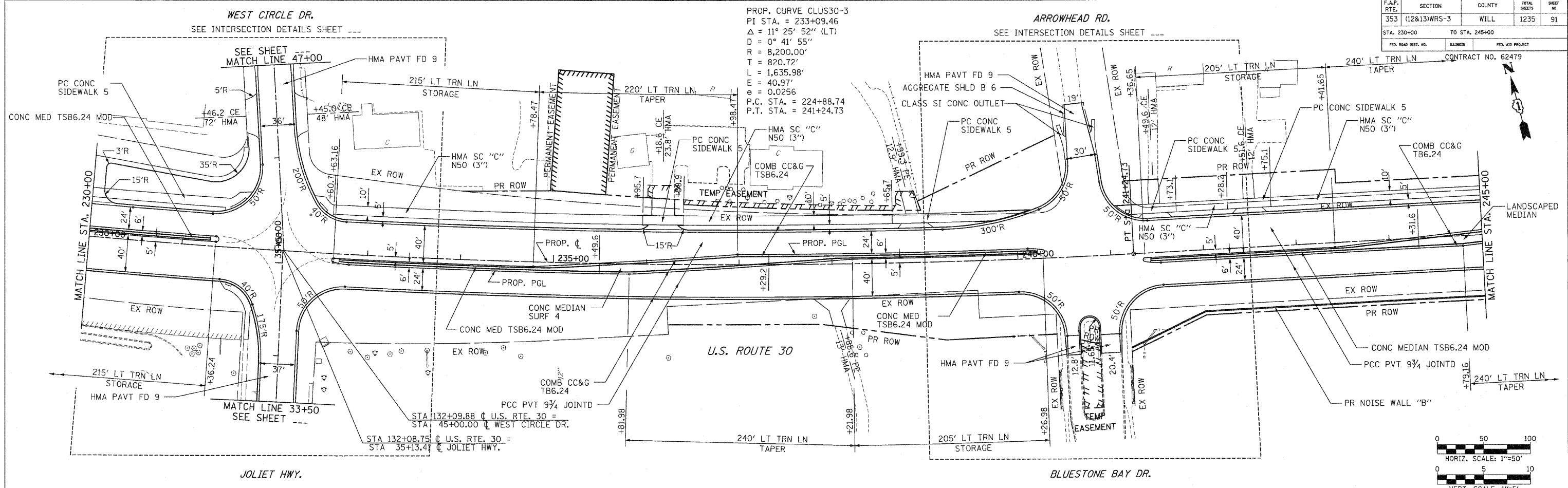


F.A.P. RTE.	SECTION	COUNTY	TOTAL SHEETS	SHEET NO.
353	(12&13)WRS-3	WILL	1235	91
STA. 230+00 TO STA. 245+00		CONTRACT NO. 62479		
FED. ROAD DIST. NO.	ILLINOIS	FED. AID PROJECT		

PROP. CURVE CLUS30-3
 PI STA. = 233+09.46
 $\Delta = 11^\circ 25' 52''$ (LT)
 $D = 0^\circ 41' 55''$
 $R = 8,200.00'$
 $T = 820.72'$
 $L = 1,635.98'$
 $E = 40.97'$
 $e = 0.0256$
 P.C. STA. = 224+88.74
 P.T. STA. = 241+24.73



732.85	732.43	732.67	732.23	732.45	732.03	732.31	731.83	732.13	731.63	731.31	731.43	731.03	731.23	731.03	731.03	731.03	730.83	731.03	730.63	730.84	730.43	730.59	730.23	730.19	730.03	730.03	729.83	730.03	729.83	729.42	729.43	728.44	729.21	728.03	728.94	727.33	728.63	726.58	728.27	725.92	727.87	725.22	727.43	724.90	726.34	725.03	726.40	725.03	725.82	725.03	725.20	725.03	724.53	724.98	723.81	724.59	723.05	724.19	722.25	723.54	721.40
230+00	231+00	232+00	233+00	234+00	235+00	236+00	237+00	238+00	239+00	240+00	241+00	242+00	243+00	244+00	245+00																																														