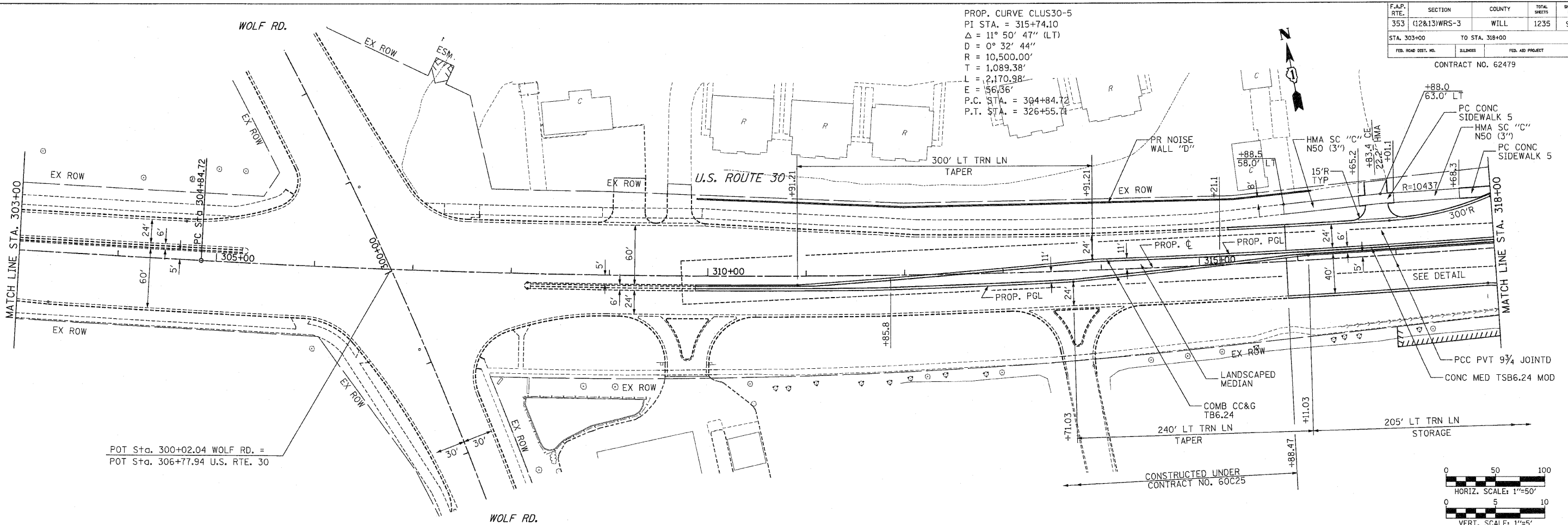


F.A.P. RTE.	SECTION	COUNTY	TOTAL SHEETS	SHEET NO.
353	(12&13)WRS-3	WILL	1235	96
STA. 303+00		TO STA. 318+00		
FED. ROAD DIST. NO.	BLDG. NO.	FED. AID PROJECT		

CONTRACT NO. 62479

PROP. CURVE CLUS30-5
 PI STA. = 315+74.10
 $\Delta = 11^\circ 50' 47''$ (LT)
 $D = 0^\circ 32' 44''$
 $R = 10,500.00'$
 $T = 1,089.38'$
 $L = 2,170.98'$
 $E = 56.36'$
 P.C. STA. = 304+84.72
 P.T. STA. = 326+55.71



POT Sta. 300+02.04 WOLF RD. =
 POT Sta. 306+77.94 U.S. RTE. 30

