

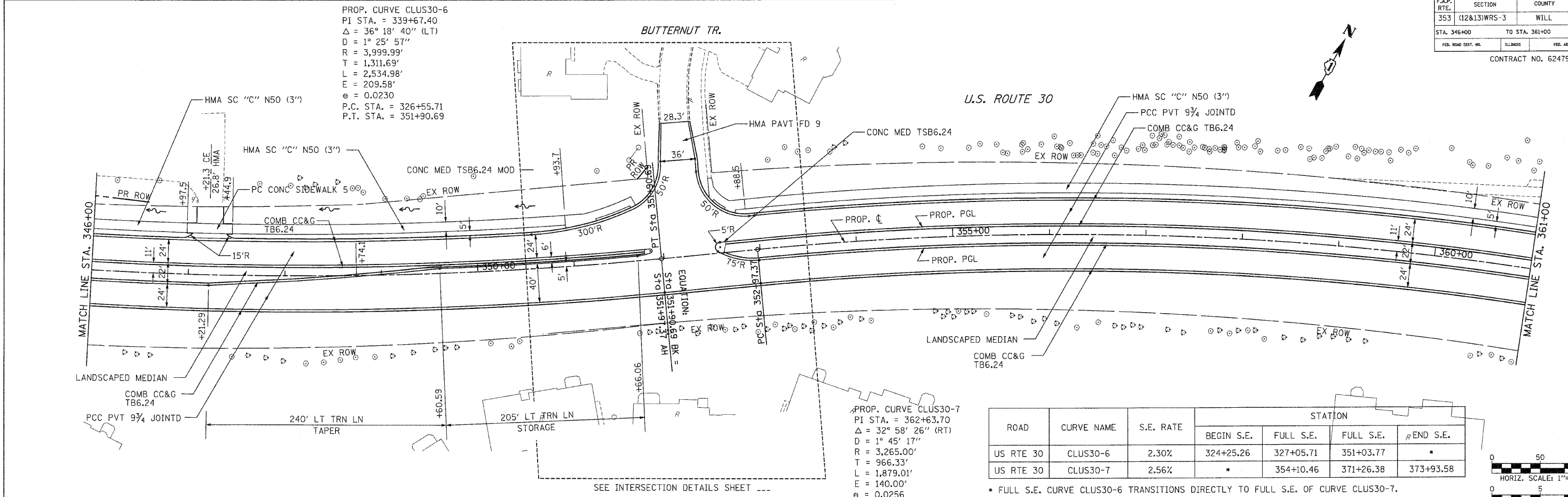
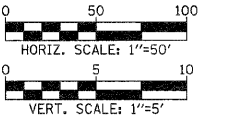
F.A.P. RTE.	SECTION	COUNTY	TOTAL SHEETS	SHEET NO.
353	(12&13)WRS-3	WILL	1235	99
STA. 346+00		TO STA. 361+00		
FED. ROAD DIST. NO.		ILLINOIS	FED. AID PROJECT	
CONTRACT NO. 62479				

PROP. CURVE CLUS30-6  
 PI STA. = 339+67.40  
 $\Delta = 36^\circ 18' 40''$  (LT)  
 $D = 1^\circ 25' 57''$   
 $R = 3,999.99'$   
 $T = 1,311.69'$   
 $L = 2,534.98'$   
 $E = 209.58'$   
 $e = 0.0230$   
 P.C. STA. = 326+55.71  
 P.T. STA. = 351+90.69

PROP. CURVE CLUS30-7  
 PI STA. = 362+63.70  
 $\Delta = 32^\circ 58' 26''$  (RT)  
 $D = 1^\circ 45' 17''$   
 $R = 3,265.00'$   
 $T = 966.33'$   
 $L = 1,879.01'$   
 $E = 140.00'$   
 $e = 0.0256$   
 P.C. STA. = 352+97.37  
 P.T. STA. = 371+76.39

ROAD	CURVE NAME	S.E. RATE	STATION			
			BEGIN S.E.	FULL S.E.	FULL S.E.	R END S.E.
US RTE 30	CLUS30-6	2.30%	324+25.26	327+05.71	351+03.77	*
US RTE 30	CLUS30-7	2.56%	*	354+10.46	371+26.38	373+93.58

\* FULL S.E. CURVE CLUS30-6 TRANSITIONS DIRECTLY TO FULL S.E. OF CURVE CLUS30-7.



SEE INTERSECTION DETAILS SHEET ---

