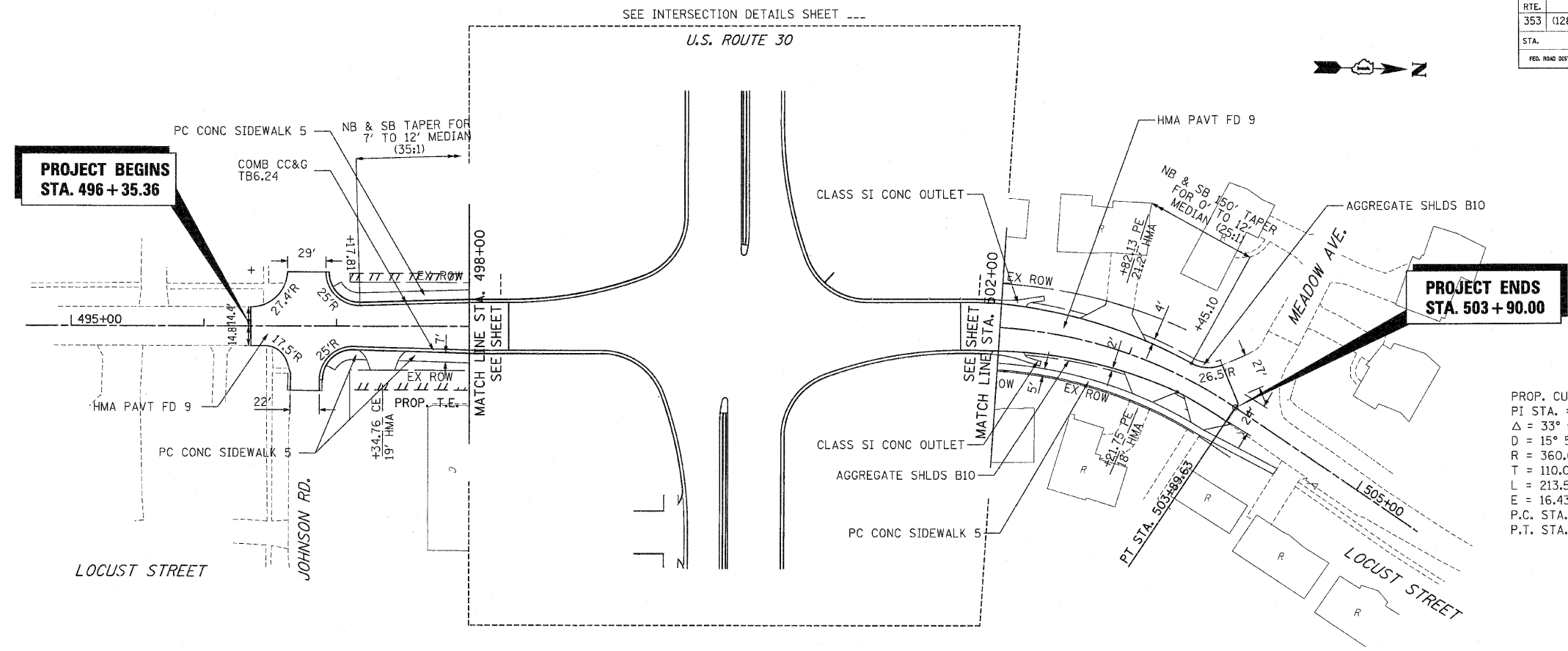


F.A.P. RTE.	SECTION	COUNTY	TOTAL SHEETS	SHEET NO
353	(12&13)WRS-3	WILL	1235	113
STA.	TO STA.			
FED. ROAD DIST. NO.	ILLINOIS	FED. AID PROJECT		

CONTRACT NO. 62479



PROP. CURVE PLOC1
 PI STA. = 502+86.11
 $\Delta = 33^\circ 59' 08''$ (RT)
 $D = 15^\circ 54' 56''$
 $R = 360.00'$
 $T = 110.01'$
 $L = 213.54'$
 $E = 16.43'$
 P.C. STA. = 501+76.09
 P.T. STA. = 503+89.63

