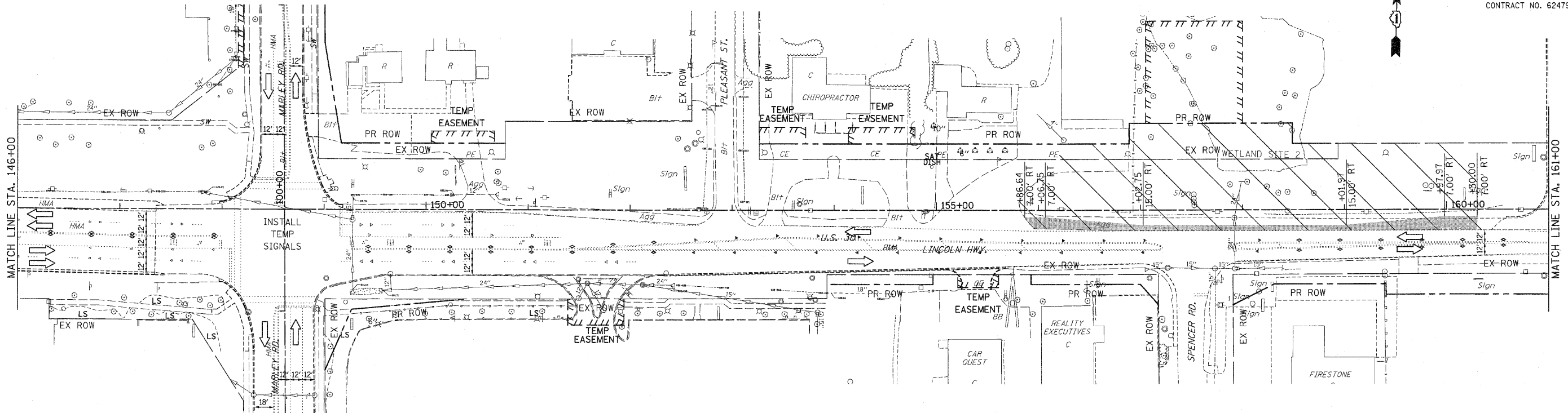
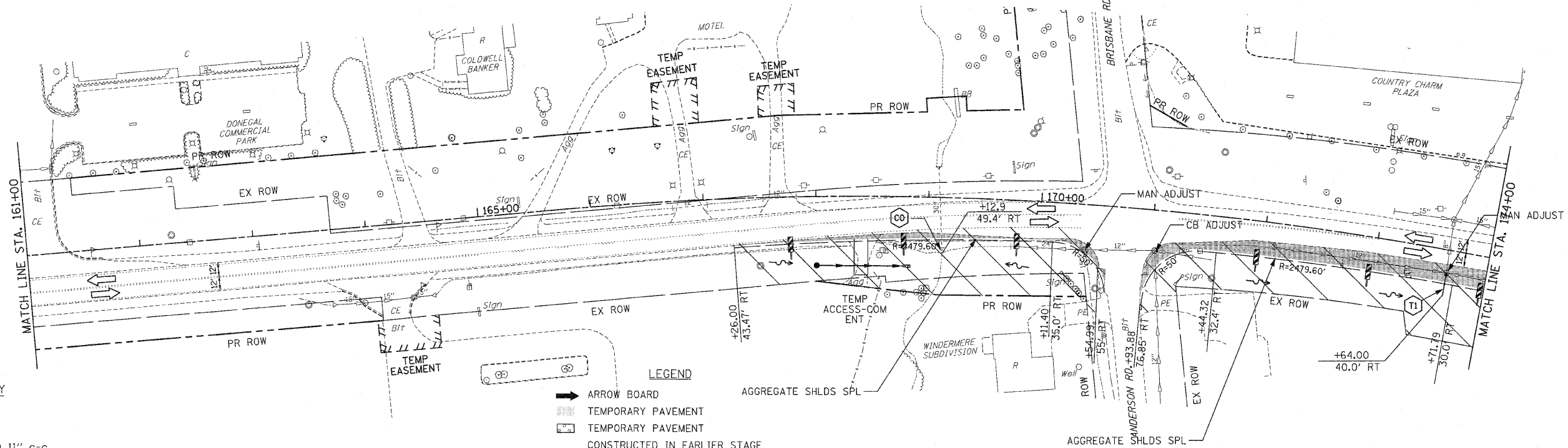


F.A.P. RTE.	SECTION	COUNTY	TOTAL SHEETS	SHEET NO.
353	(12&13)WRS-3	WILL	1235	120
STA. 146+00	TO STA. 174+00			
FED. ROAD DIST. NO.	ILLINOIS	FED. AID PROJECT		
CONTRACT NO. 62479				



PIPE NO.	PIPE CULVERT (TEMPORARY)			SLOPE (FT/FT)	INVERT		TRENCH BACKFILL
	LENGTH	DIAMETER	CLASS TYPE		U.S.	D.S.	
C0	5	30	A 1	0.005	677.43	677.40	0.0

PIPE NO.	LENGTH	DIAMETER	TYPE	SLOPE (FT/FT)	INVERT		TRENCH BACKFILL
					U.S.	D.S.	
T1	20	18	1	.01	681.30	681.10	1.1



- PAVEMENT MARKING KEY**
- 1 4" SOLID - WHITE
 - 2 12" SOLID - YELLOW
 - 3 4" SOLID - YELLOW @ 11" C-C
 - 4 24" STOP BAR - WHITE
 - 5 12" SOLID - WHITE
 - 6 6" SOLID - WHITE
 - 7 6"-6'/2" DASH-WHITE
 - 8 4" SOLID - YELLOW
 - 9 4" 30'/10" DASH WHITE

- LEGEND**
- ARROW BOARD
 - TEMPORARY PAVEMENT
 - CONSTRUCTED IN EARLIER STAGE
 - CONSTRUCTION ZONE
 - TYPE III BARRICADE WITH FLASHING LIGHTS
 - TYPE II BARRICADE
 - DRUM OR VERTICAL BARRICADE
 - DIRECTION INDICATOR BARRICADE WITH STEADY BURN MONODIRECTIONAL LIGHT
 - FLASHING LIGHT

- (XX) TEMPORARY STRUCTURE NUMBER
- (XX) TEMPORARY PIPE NUMBER

REVISIONS	
NAME	DATE

ILLINOIS DEPARTMENT OF TRANSPORTATION
MAINTENANCE OF TRAFFIC
 PRE-STAGE 1
 U.S. RTE. 30 (LINCOLN HIGHWAY)
 STA. 146+00 TO STA. 174+00
 SCALE: 1" = 50'
 DATE: / / DRAWN BY: BAE
 CHECKED BY: GB