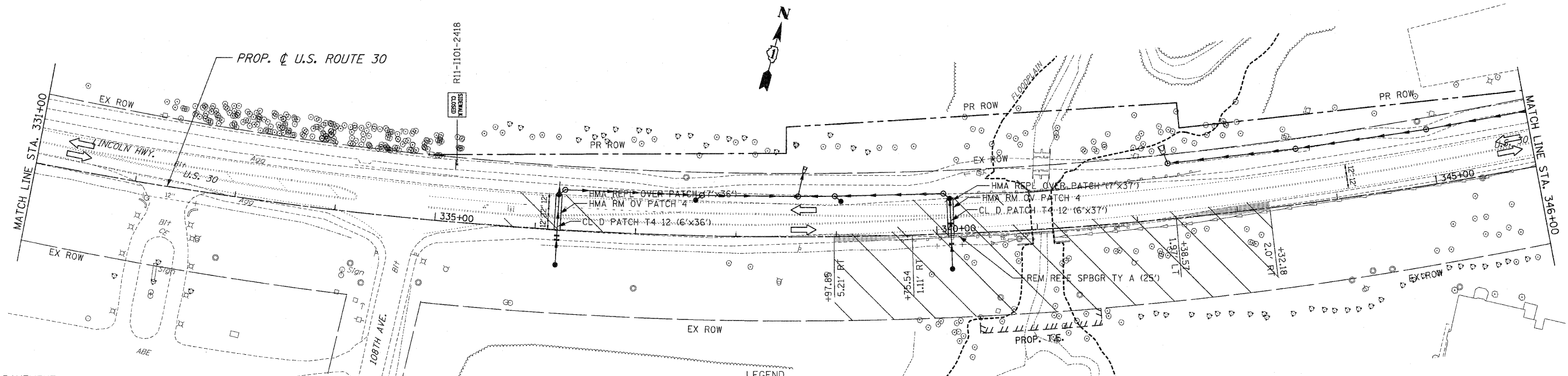
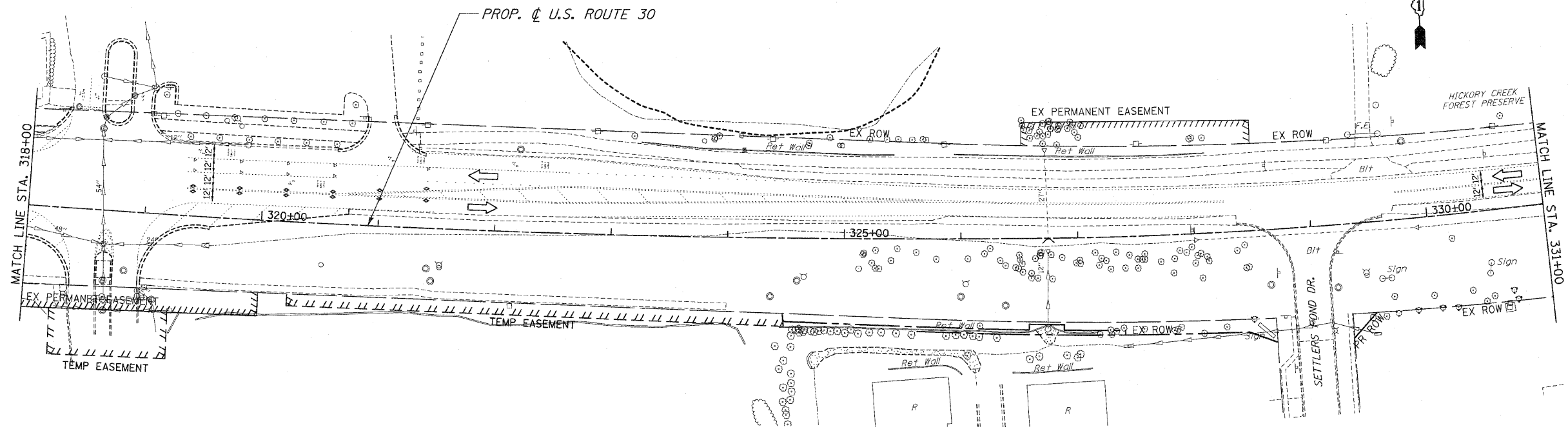


F.A.P. RTE.	SECTION	COUNTY	TOTAL SHEETS	SHEET NO.
353	(12&13)WRS-3	WILL	1235	126
STA. 318+00		TO STA. 346+00		
FED. ROAD DIST. NO.	ILLINOIS	FED. AID PROJECT		

CONTRACT NO. 62479



PAVEMENT MARKING KEY

- 1 4" SOLID - WHITE
- 2 12" SOLID - YELLOW
- 3 4" SOLID - YELLOW @ 11" o-c
- 4 24" STOP BAR - WHITE
- 5 12" SOLID - WHITE
- 6 6" SOLID - WHITE
- 7 6"-6'/2" DASH-WHITE
- 8 4" SOLID - YELLOW
- 9 4" 30'/10' DASH WHITE

LEGEND

- ARROW BOARD
- TEMPORARY PAVEMENT
- TEMPORARY PAVEMENT CONSTRUCTED IN EARLIER STAGE
- CONSTRUCTION ZONE
- TYPE III BARRICADE WITH FLASHING LIGHTS
- TYPE II BARRICADE
- DRUM OR VERTICAL BARRICADE
- DIRECTION INDICATOR BARRICADE WITH STEADY BURN MONODIRECTIONAL LIGHT
- FLASHING LIGHT
- TEMPORARY STRUCTURE NUMBER
- TEMPORARY PIPE NUMBER

REVISIONS	
NAME	DATE

ILLINOIS DEPARTMENT OF TRANSPORTATION  
**MAINTENANCE OF TRAFFIC**  
 PRE-STAGE 1  
 U.S. RTE. 30 (LINCOLN HIGHWAY)  
 STA. 318+00 TO STA. 346+00  
 SCALE : 1" = 50'  
 DATE : 10/12/2010  
 DRAWN BY : BAE  
 CHECKED BY : GB