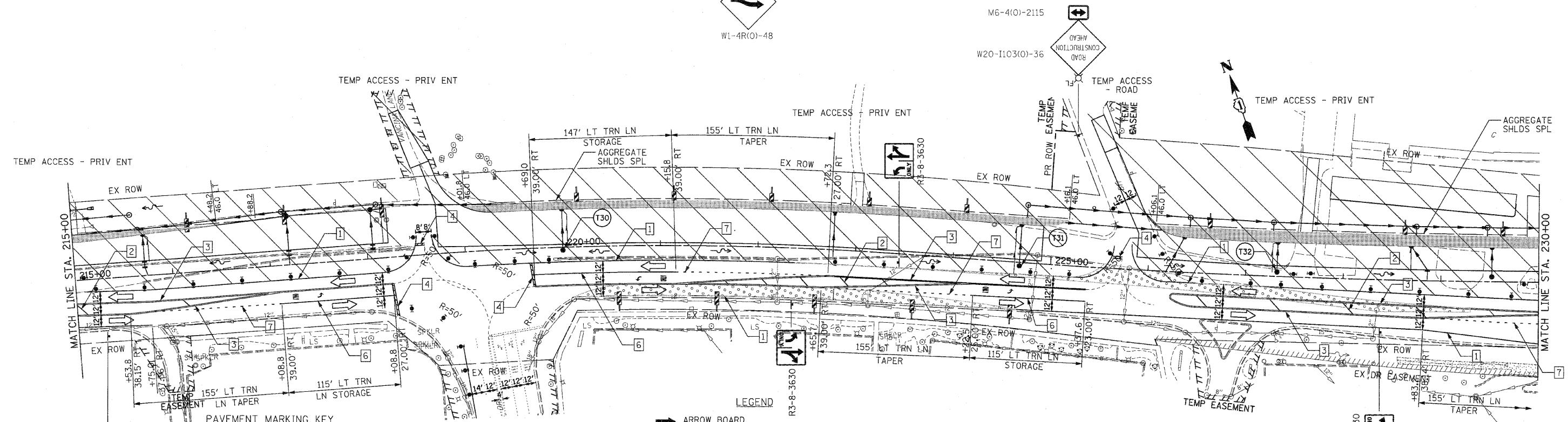
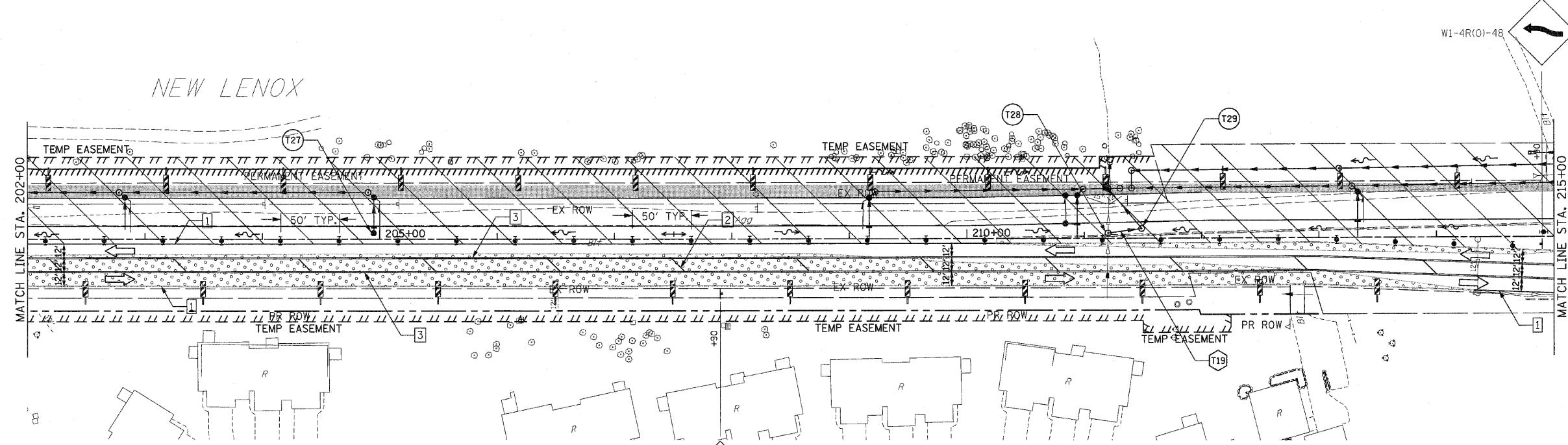


F.A.P. RTE.	SECTION	COUNTY	TOTAL SHEETS	SHEET NO.
353	(12&13)WRS-3	WILL	1235	135
STA. 202+00	TO STA. 230+00			
FED. ROAD DIST. NO.	ILLINOIS	FED. AID PROJECT		

CONTRACT NO. 62479



PAVEMENT MARKING KEY

1	4" SOLID - WHITE
2	12" SOLID - YELLOW
3	4" SOLID - YELLOW @ 11" c-c
4	24" STOP BAR - WHITE
5	12" SOLID - WHITE
6	6" SOLID - WHITE
7	6"-6'1/2' DASH-WHITE
8	4" SOLID - YELLOW
9	4" 30'/10' DASH WHITE

- LEGEND**
- ➔ ARROW BOARD
 - ▨ TEMPORARY PAVEMENT
 - ▨ TEMPORARY PAVEMENT
 - ▨ CONSTRUCTED IN EARLIER STAGE
 - ▨ CONSTRUCTION ZONE
 - ⊠ TYPE III BARRICADE WITH FLASHING LIGHTS
 - ⊠ TYPE II BARRICADE
 - ⊠ DRUM OR VERTICAL BARRICADE
 - ➔ DIRECTION INDICATOR BARRICADE WITH STEADY BURN MONODIRECTIONAL LIGHT
 - ⊠ FLASHING LIGHT
 - ⊠ TEMPORARY STRUCTURE NUMBER
 - ⊠ TEMPORARY PIPE NUMBER

- NOTES:**
- STATION AND OFFSET GIVEN TO OUTSIDE EDGE OF TRAVELED WAY.
 - STATION AND OFFSET GIVEN TO EB EDGE OF TRAVELED WAY.

REVISIONS		ILLINOIS DEPARTMENT OF TRANSPORTATION
NAME	DATE	
		MAINTENANCE OF TRAFFIC STAGE 1 U.S. RTE. 30 (LINCOLN HIGHWAY) STA. 202+00 TO STA. 230+00 SCALE : 1" = 50' DATE : / / DRAWN BY : BAE CHECKED BY : GB