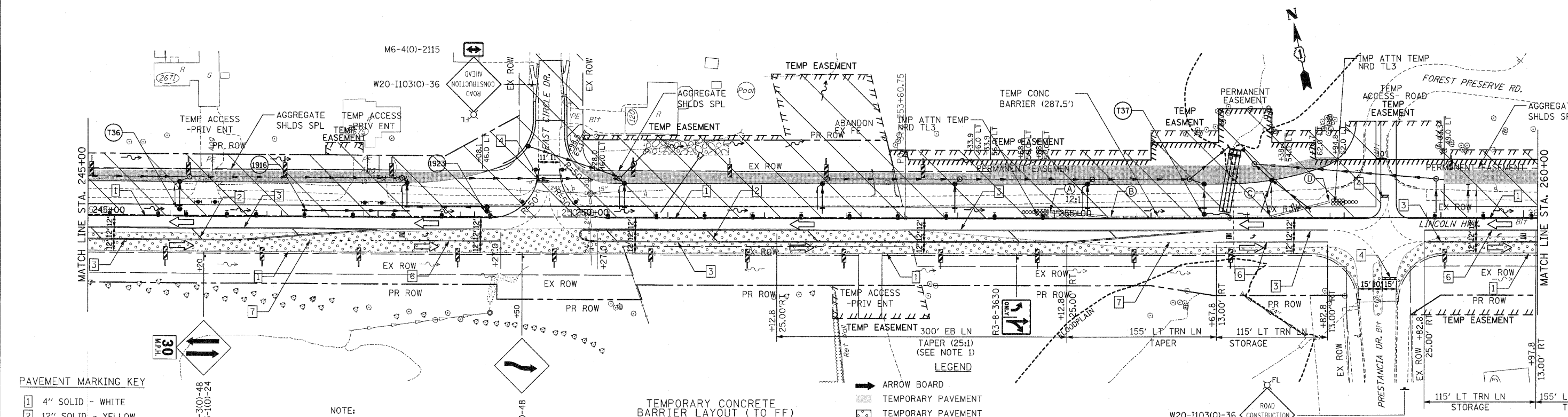
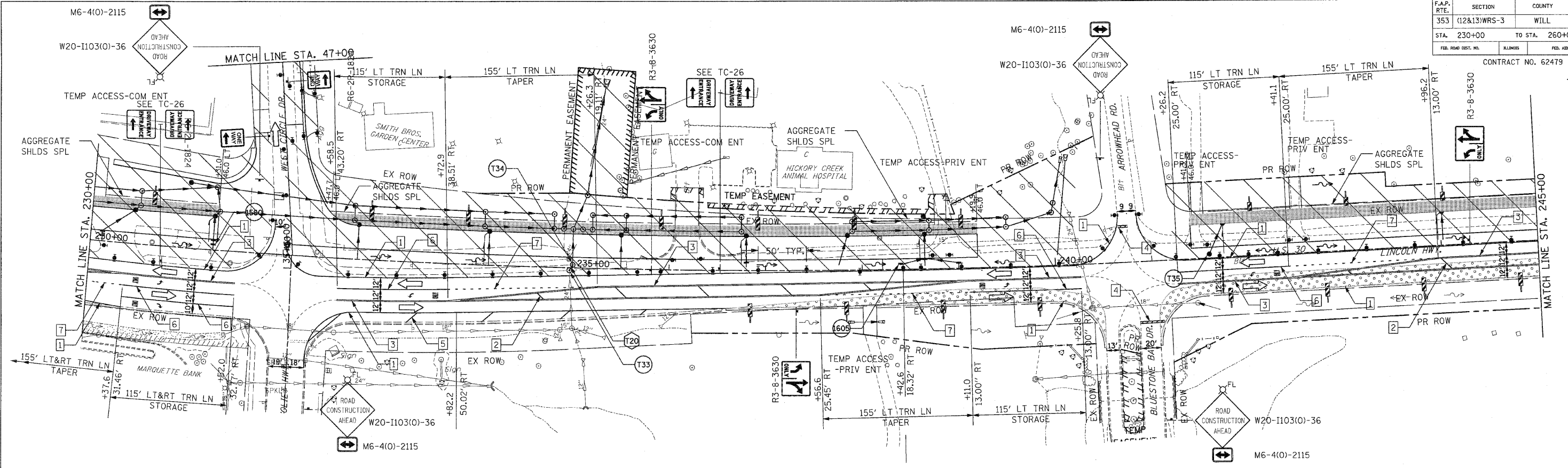


F.A.P. RTE.	SECTION	COUNTY	TOTAL SHEETS	SHEET NO
353	(12&13)WRS-3	WILL	1235	136
STA. 230+00		TO STA. 260+00		
FED. ROAD DIST. NO.		MILES		FED. AID PROJECT

CONTRACT NO. 62479



PAVEMENT MARKING KEY

1	4" SOLID - WHITE
2	12" SOLID - YELLOW
3	4" SOLID - YELLOW @ 11" C-C
4	24" STOP BAR - WHITE
5	12" SOLID - WHITE
6	6" SOLID - WHITE
7	6"-6 1/2" DASH-WHITE
8	4" SOLID - YELLOW
9	4" 30'/10' DASH WHITE

NOTE:
1. STATION AND OFFSET GIVEN TO EB EDGE OF TRAVELED WAY.

TEMPORARY CONCRETE BARRIER LAYOUT (TO FF)

LOCATION	STATION	OFFSET
A	254+95.51	05.26' LT
B	255+58.62	00.00' RT
C	257+23.12	00.00' RT
D	257+84.80	15.35' LT

- LEGEND**
- ARROW BOARD
 - ▨ TEMPORARY PAVEMENT
 - ▨ TEMPORARY PAVEMENT CONSTRUCTED IN EARLIER STAGE
 - ▨ CONSTRUCTION ZONE
 - ⌋ TYPE III BARRICADE WITH FLASHING LIGHTS
 - ⌋ TYPE II BARRICADE
 - ⌋ DRUM OR VERTICAL BARRICADE
 - DIRECTION INDICATOR BARRICADE WITH STEADY BURN MONODIRECTIONAL LIGHT
 - ⊘ FLASHING LIGHT
 - ⊘ TEMPORARY STRUCTURE NUMBER
 - ⊘ TEMPORARY PIPE NUMBER

REVISIONS

NAME	DATE

ILLINOIS DEPARTMENT OF TRANSPORTATION
MAINTENANCE OF TRAFFIC
STAGE 1
U.S. RTE. 30 (LINCOLN HIGHWAY)
STA. 230+00 TO STA. 260+00
SCALE: 1" = 50'
DATE: / /
DRAWN BY: BAE
CHECKED BY: GB