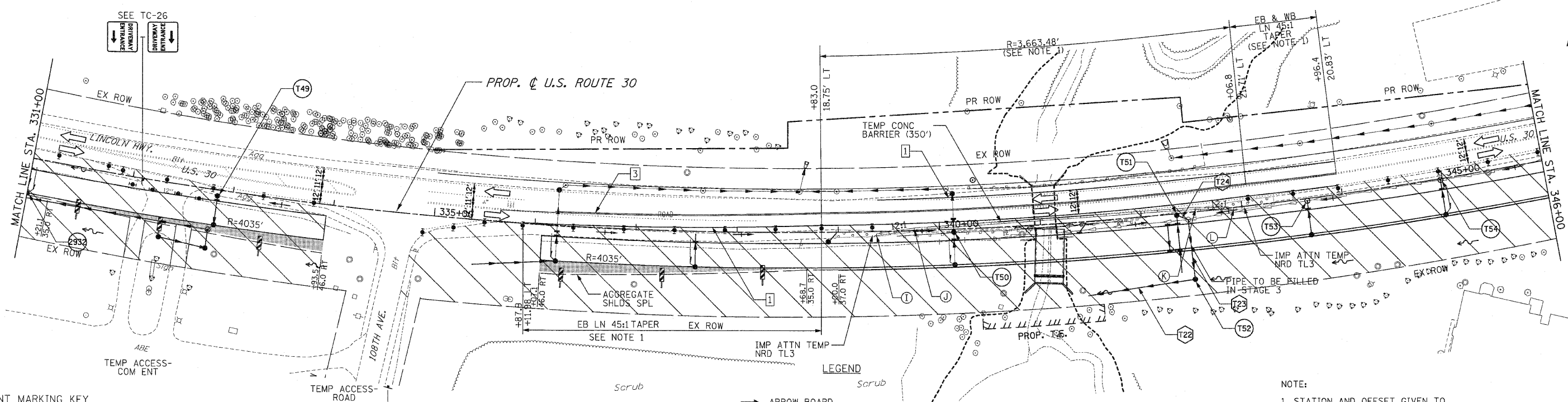
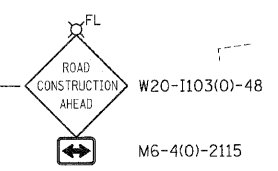
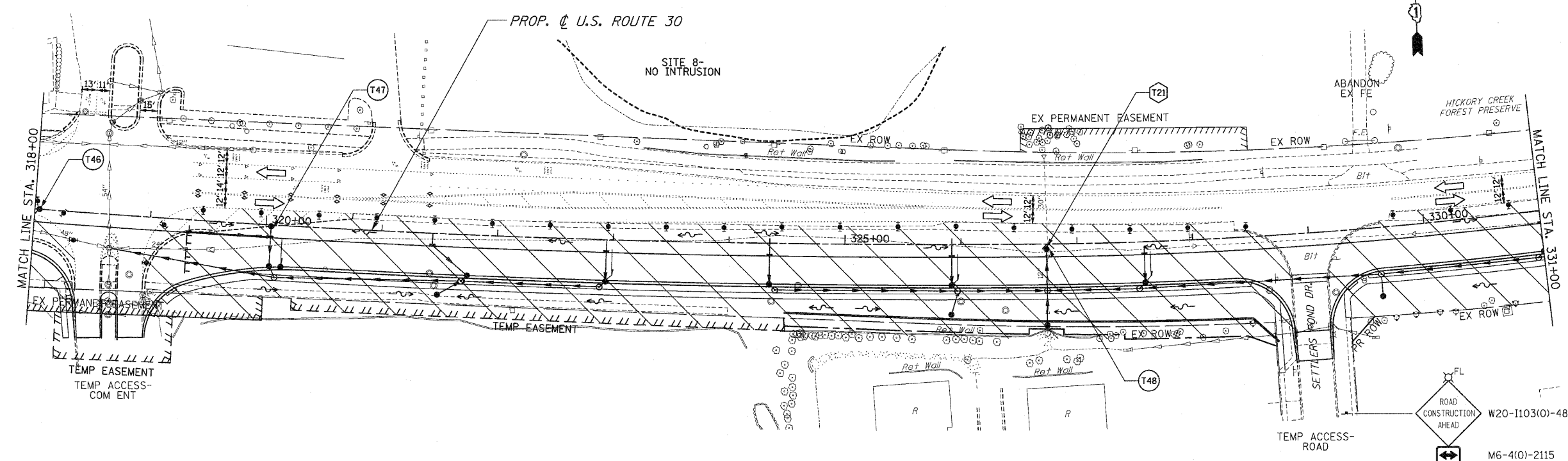


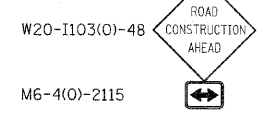
F.A.P. RTE.	SECTION	COUNTY	TOTAL SHEETS	SHEET NO.
353	(12&13)WRS-3	WILL	1235	139
STA. 318+00	TO STA. 346+00			
FED. ROAD DIST. NO.	ILLINOIS	FED. AID PROJECT		

CONTRACT NO. 62479



PAVEMENT MARKING KEY

- 1 4" SOLID - WHITE
- 2 12" SOLID - YELLOW
- 3 4" SOLID - YELLOW @ 11" C-C
- 4 24" STOP BAR - WHITE
- 5 12" SOLID - WHITE
- 6 6" SOLID - WHITE
- 7 6"-6'/2' DASH-WHITE
- 8 4" SOLID - YELLOW
- 9 4" 30'/10' DASH WHITE



TEMPORARY CONCRETE BARRIER LAYOUT (TO FF)

LOCATION	STATION	OFFSET
J	339+37.61	2.30' RT
K	339+75.30	2.59' LT
L	342+54.25	4.33' LT
M	342+92.01	0.08' RT

- ARROW BOARD
- TEMPORARY PAVEMENT
- TEMPORARY PAVEMENT CONSTRUCTED IN EARLIER STAGE
- CONSTRUCTION ZONE
- TYPE III BARRICADE WITH FLASHING LIGHTS
- TYPE II BARRICADE
- DRUM OR VERTICAL BARRICADE
- DIRECTION INDICATOR BARRICADE WITH STEADY BURN MONODIRECTIONAL LIGHT
- FLASHING LIGHT

- XX TEMPORARY STRUCTURE NUMBER
- XX TEMPORARY PIPE NUMBER

NOTE:
1. STATION AND OFFSET GIVEN TO CENTER OF EB & WB LANES.

REVISIONS		ILLINOIS DEPARTMENT OF TRANSPORTATION MAINTENANCE OF TRAFFIC STAGE 1 U.S. RTE. 30 (LINCOLN HIGHWAY) STA. 318+00 TO STA. 346+00 SCALE: 1" = 50' DATE: 10/12/2010
NAME	DATE	
		DRAWN BY: BAE CHECKED BY: GB