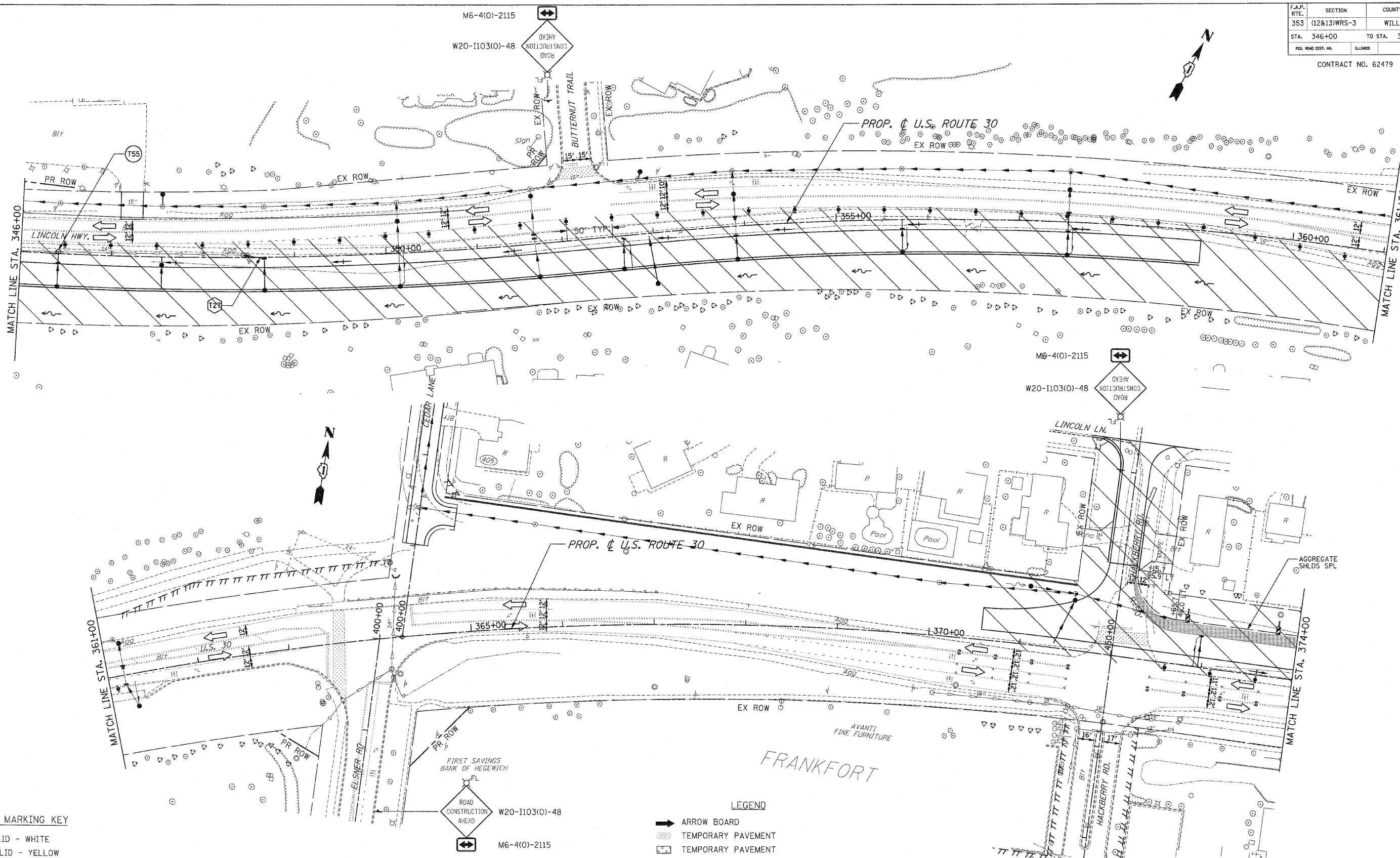


F.A.P. RTE.	SECTION	COUNTY	TOTAL SHEETS	SHEET NO.
353	(12&13)WRS-3	WILL	1235	140
STA. 346+00	TO STA. 374+00			
FED. ROAD DIST. NO.	ILLINOIS	FED. AID PROJECT		

CONTRACT NO. 62479



PAVEMENT MARKING KEY

- 1 4" SOLID - WHITE
- 2 12" SOLID - YELLOW
- 3 4" SOLID - YELLOW @ 11" C-C
- 4 24" STOP BAR - WHITE
- 5 12" SOLID - WHITE
- 6 6" SOLID - WHITE
- 7 6"-6'/2" DASH-WHITE
- 8 4" SOLID - YELLOW
- 9 4' 30'/10' DASH WHITE

LEGEND

- ➔ ARROW BOARD
- ▨ TEMPORARY PAVEMENT
- ▩ TEMPORARY PAVEMENT CONSTRUCTED IN EARLIER STAGE
- ▧ CONSTRUCTION ZONE
- ⊠ TYPE III BARRICADE WITH FLASHING LIGHTS
- ⊡ TYPE II BARRICADE
- ⊞ DRUM OR VERTICAL BARRICADE
- ➔ DIRECTION INDICATOR BARRICADE WITH STEADY BURN MONODIRECTIONAL LIGHT
- ⊞^{FL} FLASHING LIGHT
- ⊞ TEMPORARY STRUCTURE NUMBER
- ⊞ TEMPORARY PIPE NUMBER

REVISIONS	
NAME	DATE

ILLINOIS DEPARTMENT OF TRANSPORTATION
MAINTENANCE OF TRAFFIC
 STAGE 1
 U.S. RTE. 30 (LINCOLN HIGHWAY)
 STA. 346+00 TO STA. 374+00
 SCALE : 1" = 50'
 DATE : / /
 DRAWN BY : BAE
 CHECKED BY : GB