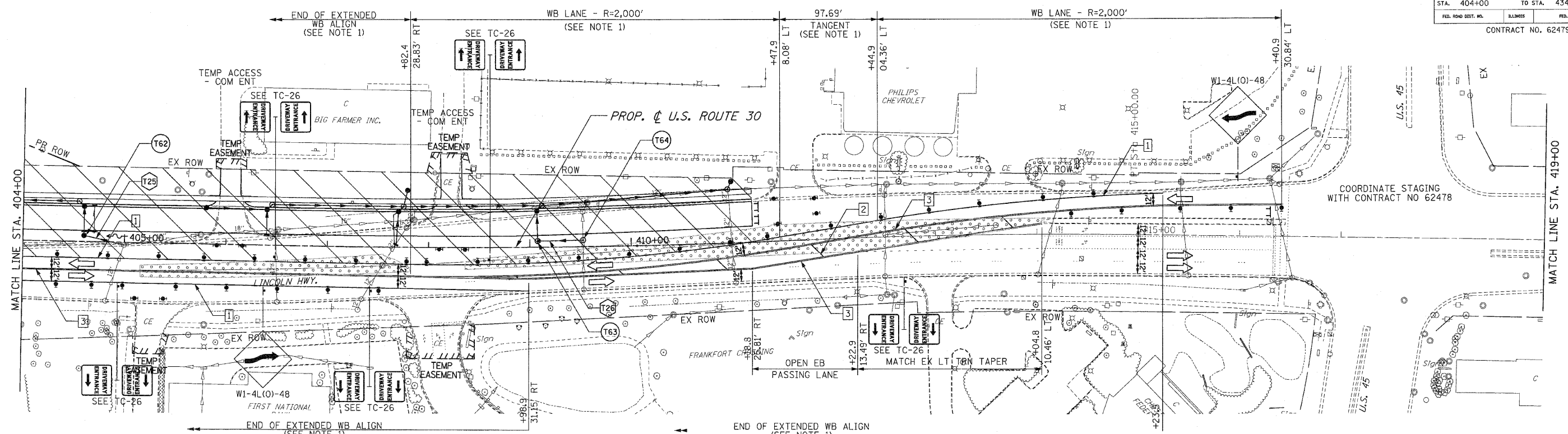


F.A.P. RTE.	SECTION	COUNTY	TOTAL SHEETS	SHEET NO.
353	(12&13)WRS-3	WILL	1235	142
STA. 404+00	TO STA. 434+00			
FED. ROAD DIST. NO.	ILLINOIS	FED. AID PROJECT		
CONTRACT NO. 62479				



STAGE 1 TEMPORARY STRUCTURE TABLE

STR. #	STATION	OFFSET	STRUCTURE		RIM ELEV	INVERT ELEVATION				
			TYPE	FRAME		NORTH	EAST	SOUTH	WEST	
T14	138+31	-0.3	CB C	8	676.5	673.00				
T15	143+98	0	MHA6	8	674.75	669.60	671.30			
T16	144+26.4	0	MHA5	8	675.31			671.58	671.58	
T17	150+76	-2.2	CB C	8	685.3	681.75				
T18	158 + 34	8	CB C	8	687.6	686.36				683.20
T19	163+88	2	CB C	8	689	686.46				
T20	165+94	3	CB C	8	685.8	683.45				
T21	169+11	2	MHA5	8	682.3	675.31		676.35	EXIST	
T22	171+39	0	INA	8	684.3	682.70				
T23	172+93	-0.08	CB C	8	685.35	681.75				
T24	175+77	-2	CB C	8	688	684.11				
T25	180+02	10	CB C	8	688.75	684.53				
*1014					696.2	691.82				
T26	198+87	-5	CB C	8	708.1	704.16				
*1052					702.4	698.70				
T27	204+95	-6	CB C	8	720.6	716.30				
T28	211+20.11	-4.5	MHA5	1 CL	721.5		717.70	717.70		
T29	211+48.8	-8.4	CBA5	8	720.7	717.48		717.48		
T30	220+00	3	CB C	8	732.5	728.37				
T31	224+68	3	CB C	8	732.9	729.46				
T32	227+32	4.5	CB C	8	732.1	728.55				
*1560					729.6					
T33	204+97	2.5	MHA5	1 CL	729		722.16	722.16		
T34	235+00	3	MHA5	10L	728.7	722.46		722.46		
*1605	238+40				727.8					
T35	241+60	-4	CB C	8	724.3	721.30				
T36	245+95	-6.5	CB C	8	719	714.60				
*1916					716.9					
*1923					713.5					
T37	254+38	-3.8	CB C	8	705.7	700.56				
T38	263+33	-6	CB C	8	699.8	695.61				
T39	266+27	-9	CB C	8	698.2	694.46				
T40	268+99	-5	CB C	8	697	693.54				
T41	273+95	-5.7	CB C	8	704.7	701.90				
T42	276+28	4	CB C	8	713.2	709.72				
T43	282+48	-1.5	CB C	8	715.7	713.88				
T44	290+46	-2	CB C	8	710.8	708.43				
T45	291+99	-6.5	CB C	8	710.9	707.48				
T46	318+04	0	CB C	8	718.4			715.42		
T47	320+04	0	CB C	8	717.7			715.56		
T48	326+73.6	4.3	CBA5	8	719.5	717.40		712.57		
*2932					725.1					
T49	332+85	7	CB C	8	727.8			723.8		
T50	340+20	4.5	CB C	8	725.4	722.96		722.96		
T51	342+35	3.5	CB C	8	724.4		717.12	718.78		
T52	342+47	6.7	CBA5	8	722.8	716.57		716.57		
T53	343+65	2.2	MHA5	8	723.9		717.0 EX	722.49	EXIST	
T54	344+98	1.1	MHA5	8	724.6		717.5 EX	723.25	717.5 EX	
T55	346+42	2	MHA5	8	725.6		718.1 EX	725.65	718.1 EX	
T56	377+12	0	CB C	8	730.8	727.56				
T60	387+43	-3	CB C	8	727.6	725.02				
T61	402+60	-3	CB C	8	732	728.88				
T62	404+60	-6	CB C	8	731.7					
T63	409+08	-6	MHA4	8	729.8					
T64	409+53	-6.4	MHA4	8	729.5	727.18	727.18			727.15

STAGE 1 TEMPORARY PIPE TABLE

#	INVERT		SLOPE (FT/FT)	STORM SEWER			TRENCH BACKFILL (CU YD)
	U. S.	D. S.		TYPE	LENGTH (FT)	CLASS	
T17	671.58	671.3	0.010	1	28	B	24
T18	683.70	683.2	0.010	1	50	B	15
T19	717.70	717.48	0.010	1	29	B	24
T20	722.16	722.46	0.043	1	7	B	30
T21	717.40	717.36	0.010	1	4	B	30
T22	716.57	716.14	0.004	1	107	B	24
T23	717.12	717.00	0.010	1	59	B	12
T24	725.41	725.18	0.010	1	23	B	12
T25	727.90	727.89	0.005	1	40	B	12
T26	725.17	725.18	0.010	1	45	B	12
T27	EXIST	EXIST	0.010	1	23	B	12
T28	725.17	725.18	0.010	1	45	B	12
T90	725.50	725.42	0.010	1	8	B	15
T91	725.68	725.61	0.010	1	7	B	15

* SEE DRAINAGE PLANS FOR THIS INFORMATION

STAGE 1 TEMPORARY CULVERT TABLE

PIPE NO.	PIPE CULVERT (TEMPORARY)				SLOPE (FT/FT)	INVERT		TRENCH BACKFILL
	LENGTH	DIAMETER	CLASS	TYPE		U.S.	D.S.	
C7	44	24	A	1	.01	682.85	682.67	3.6

LEGEND

- PAVEMENT MARKING KEY
- 1 4" SOLID - WHITE
 - 2 12" SOLID - YELLOW
 - 3 4" SOLID - YELLOW @ 11" c-c
 - 4 24" STOP BAR - WHITE
 - 5 12" SOLID - WHITE
 - 6 6" SOLID - WHITE
 - 7 6"-6'/2' DASH-WHITE
 - 8 4" SOLID - YELLOW
 - 9 4" 30'/10' DASH WHITE
- ARROW BOARD
 - TEMPORARY PAVEMENT
 - TEMPORARY PAVEMENT CONSTRUCTED IN EARLIER STAGE
 - CONSTRUCTION ZONE
 - TYPE III BARRICADE WITH FLASHING LIGHTS
 - TYPE II BARRICADE
 - DRUM OR VERTICAL BARRICADE
 - DIRECTION INDICATOR BARRICADE WITH STEADY BURN MONODIRECTIONAL LIGHT
 - FLASHING LIGHT
 - TEMPORARY STRUCTURE NUMBER
 - TEMPORARY PIPE NUMBER

NOTES:

1. STATION AND OFFSET DATA GIVEN TO INSIDE EDGE OF TRAVELED WAY (YELLOW LINE).
2. STATION AND OFFSET GIVEN TO OUTSIDE EDGE OF TRAVELED WAY.

REVISIONS		ILLINOIS DEPARTMENT OF TRANSPORTATION
NAME	DATE	
		MAINTENANCE OF TRAFFIC STAGE 1 U.S. RTE. 30 (LINCOLN HIGHWAY) STA. 404+00 TO STA. 419+00 SCALE : 1" = 50' DATE : / / DRAWN BY : BAE CHECKED BY : GB