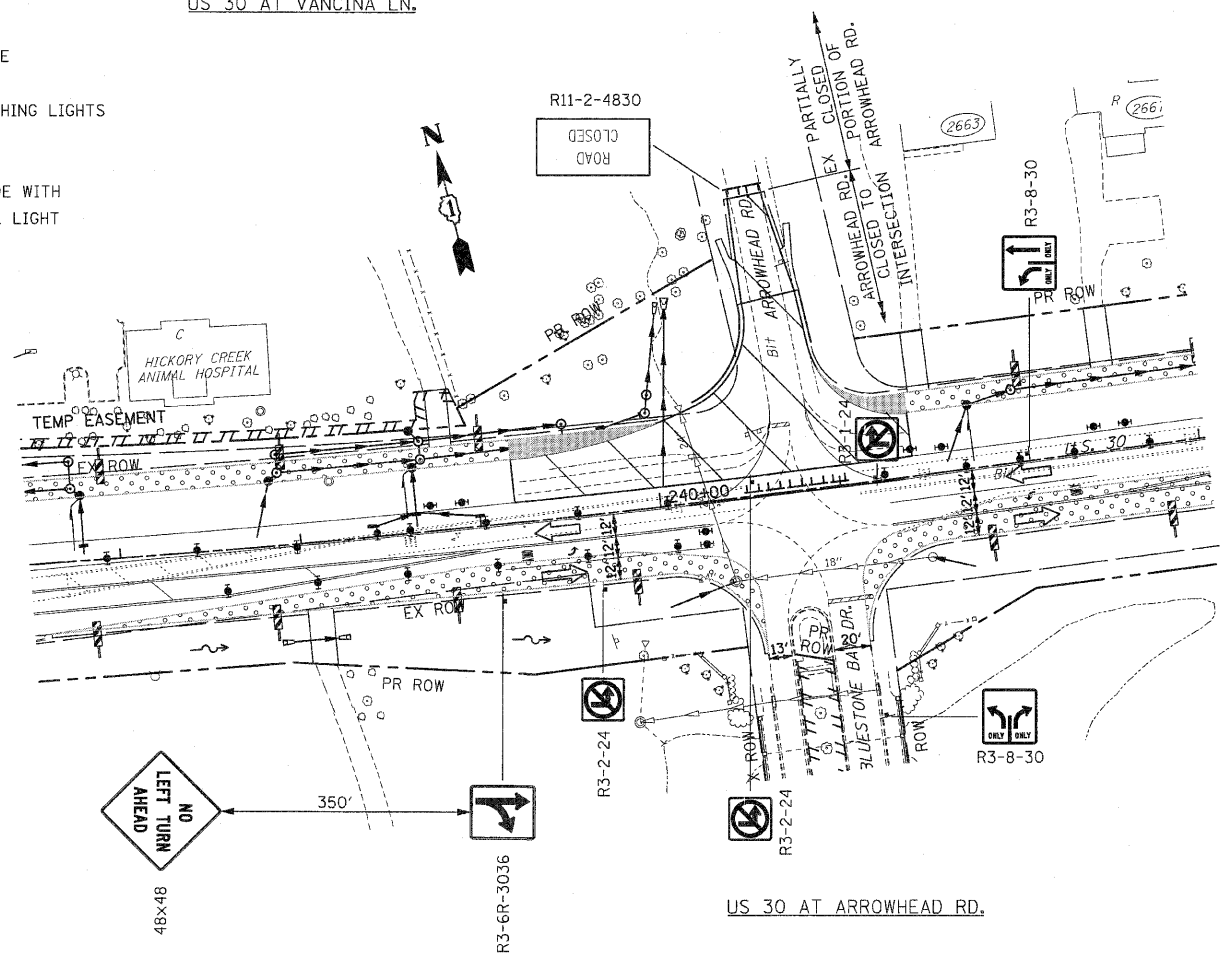
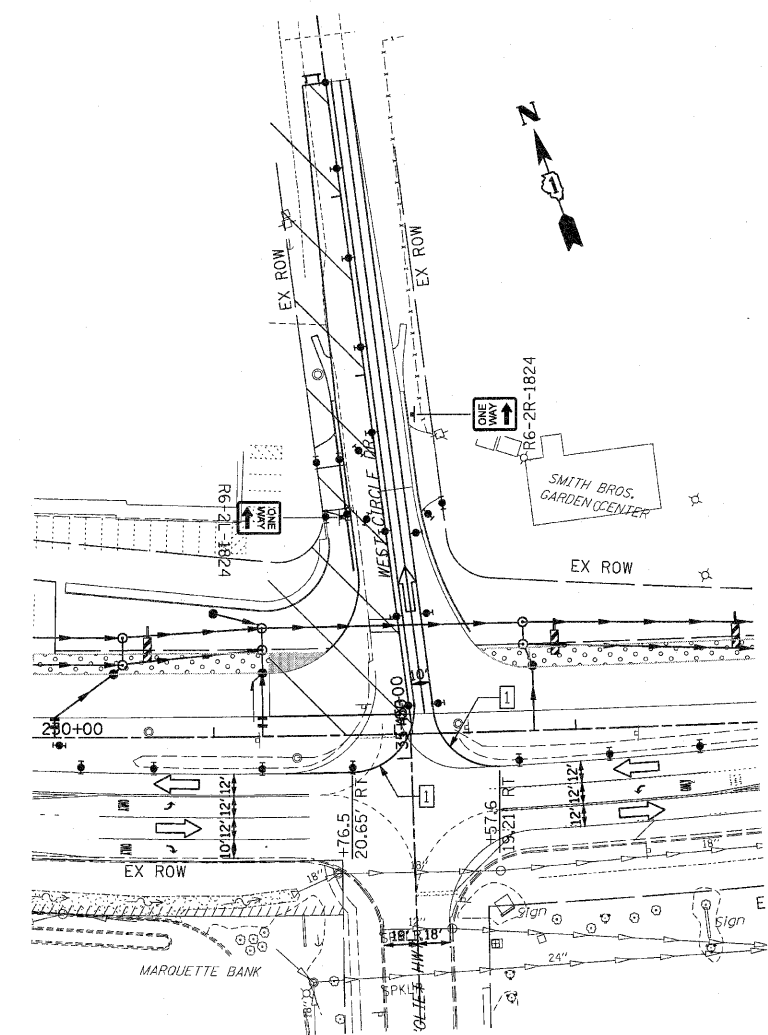
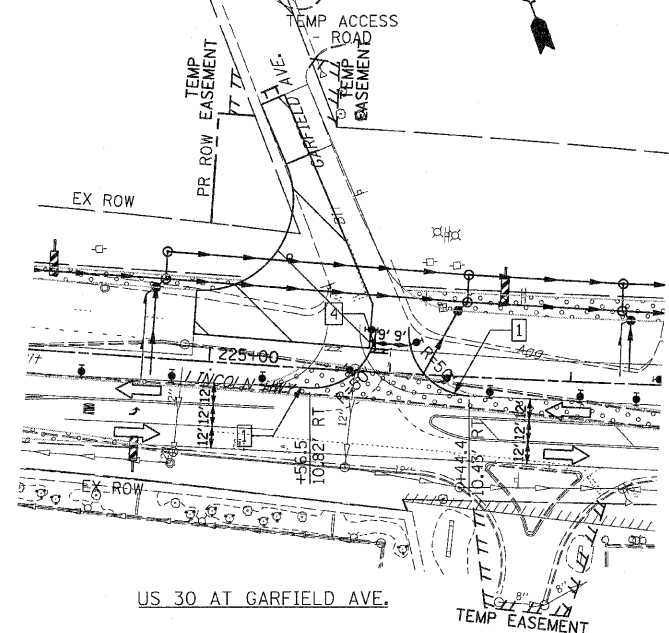
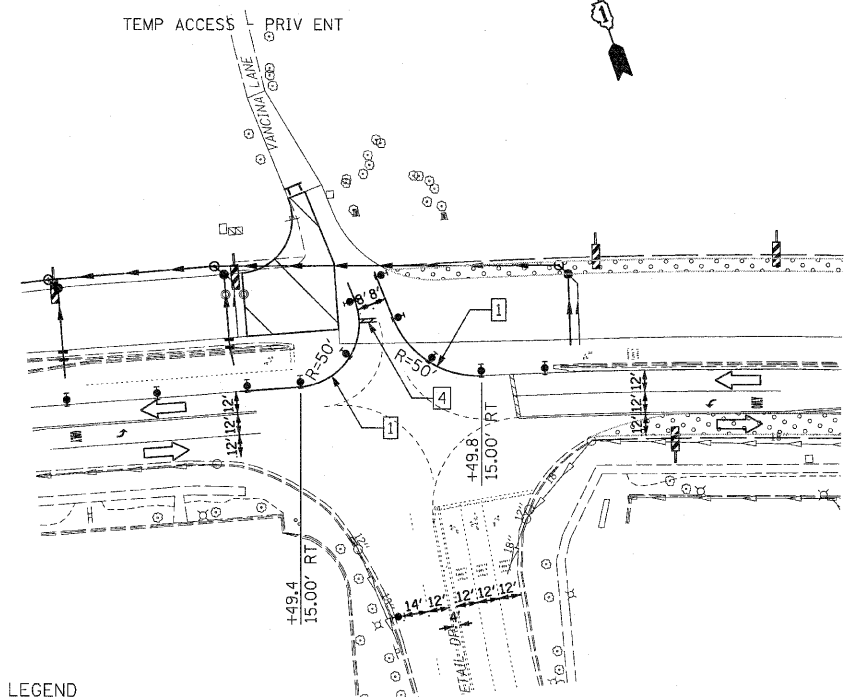


F.A.P. RTE.	SECTION	COUNTY	TOTAL SHEETS	SHEET NO
353	(12&13)WRS-3	WILL	1235	147
STA. 202+00	TO STA. 230+00			
FED. ROAD DIST. NO.	ILLINOIS	FED. AID PROJECT		
CONTRACT NO. 62479				



**LEGEND**

- ➔ ARROW BOARD
- ▨ TEMPORARY PAVEMENT
- ▨ TEMPORARY PAVEMENT CONSTRUCTED IN EARLIER STAGE
- ▨ CONSTRUCTION ZONE
- ⊠ TYPE III BARRICADE WITH FLASHING LIGHTS
- ⊠ TYPE II BARRICADE
- ⊠ DRUM OR VERTICAL BARRICADE
- ➔ DIRECTION INDICATOR BARRICADE WITH STEADY BURN MONODIRECTIONAL LIGHT
- ⊠ FL FLASHING LIGHT

**PAVEMENT MARKING KEY**

- 1 4" SOLID - WHITE
- 2 12" SOLID - YELLOW
- 3 4" SOLID - YELLOW @ 11" o-c
- 4 24" STOP BAR - WHITE
- 5 12" SOLID - WHITE
- 6 6" SOLID - WHITE
- 7 6"-6'/2" DASH-WHITE
- 8 4" SOLID - YELLOW
- 9 4" 30'/10' DASH WHITE

REVISIONS		ILLINOIS DEPARTMENT OF TRANSPORTATION
NAME	DATE	
		<b>MAINTENANCE OF TRAFFIC</b> STAGE 1A U.S. RTE. 30 (LINCOLN HIGHWAY) AT VANCINA LN, GARFIELD AVE, WEST CIRCLE DR, ARROWHEAD RD SCALE : 1" = 50' DATE : / / DRAWN BY : BAE CHECKED BY : GB