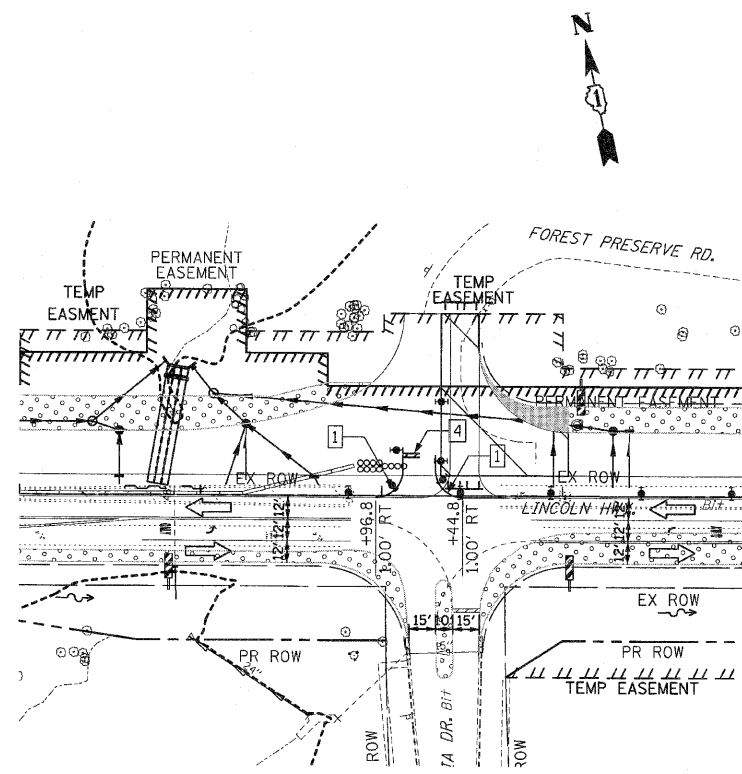
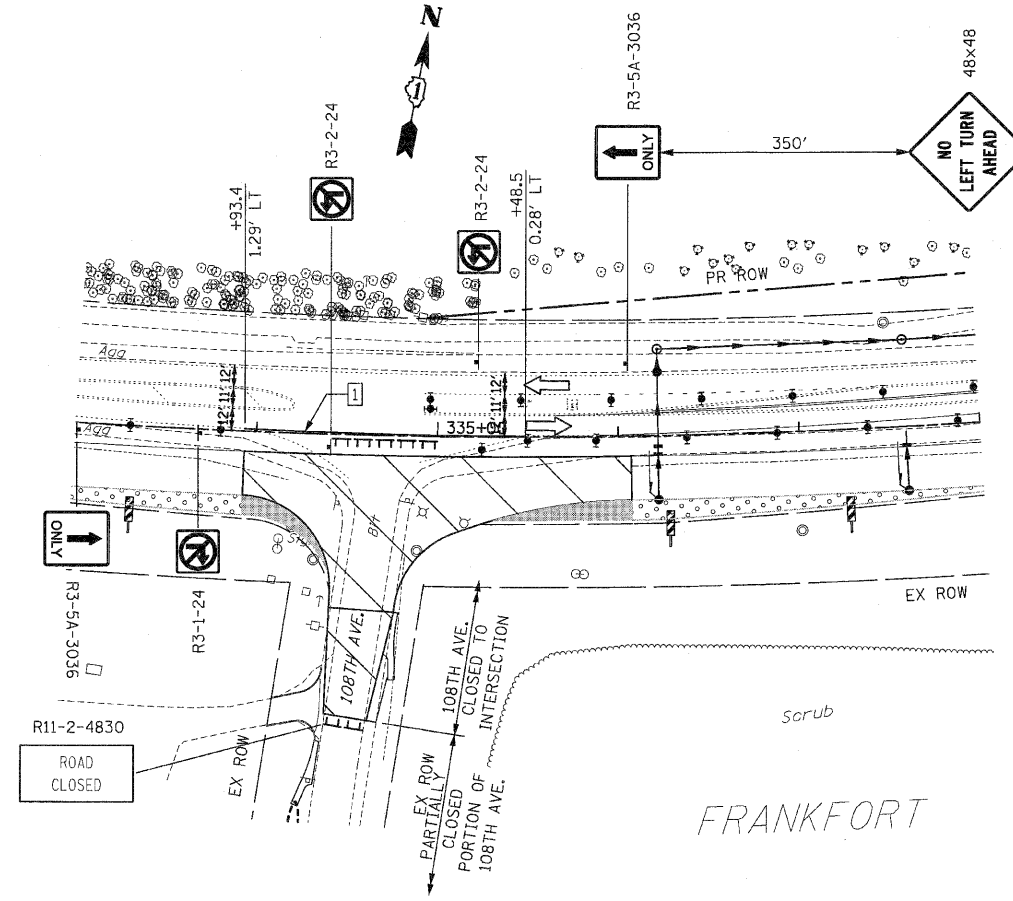


F.A.P. RTE.	SECTION	COUNTY	TOTAL SHEETS	SHEET NO
353	(12&13)WRS-3	WILL	1235	148
STA. 202+00		TO STA. 230+00		
FED. ROAD DIST. NO.	ILLINOIS	FED. AID PROJECT		
CONTRACT NO. 62479				



US 30 AT PRESTANCIA DR.



US 30 AT 108TH AVE.

LEGEND

PAVEMENT MARKING KEY

- 1 4" SOLID - WHITE
- 2 12" SOLID - YELLOW
- 3 4" SOLID - YELLOW @ 11" C-C
- 4 24" STOP BAR - WHITE
- 5 12" SOLID - WHITE
- 6 6" SOLID - WHITE
- 7 6"-6'1/2' DASH-WHITE
- 8 4" SOLID - YELLOW
- 9 4" 30'/10' DASH WHITE

- ➔ ARROW BOARD
- ▨ TEMPORARY PAVEMENT
- ▨ TEMPORARY PAVEMENT CONSTRUCTED IN EARLIER STAGE
- ▨ CONSTRUCTION ZONE
- ⌋ TYPE III BARRICADE WITH FLASHING LIGHTS
- ⌋ TYPE II BARRICADE
- ⊙ DRUM OR VERTICAL BARRICADE
- ➔ DIRECTION INDICATOR BARRICADE WITH STEADY BURN MONODIRECTIONAL LIGHT
- ⊗^{FL} FLASHING LIGHT

REVISIONS	
NAME	DATE

ILLINOIS DEPARTMENT OF TRANSPORTATION
MAINTENANCE OF TRAFFIC
 STAGE 1A
 U.S. RTE. 30 (LINCOLN HIGHWAY)
 AT PRESTANCIA DR, 108TH AVE
 SCALE : 1" = 50'
 DATE : / /
 DRAWN BY : BAE
 CHECKED BY : GB