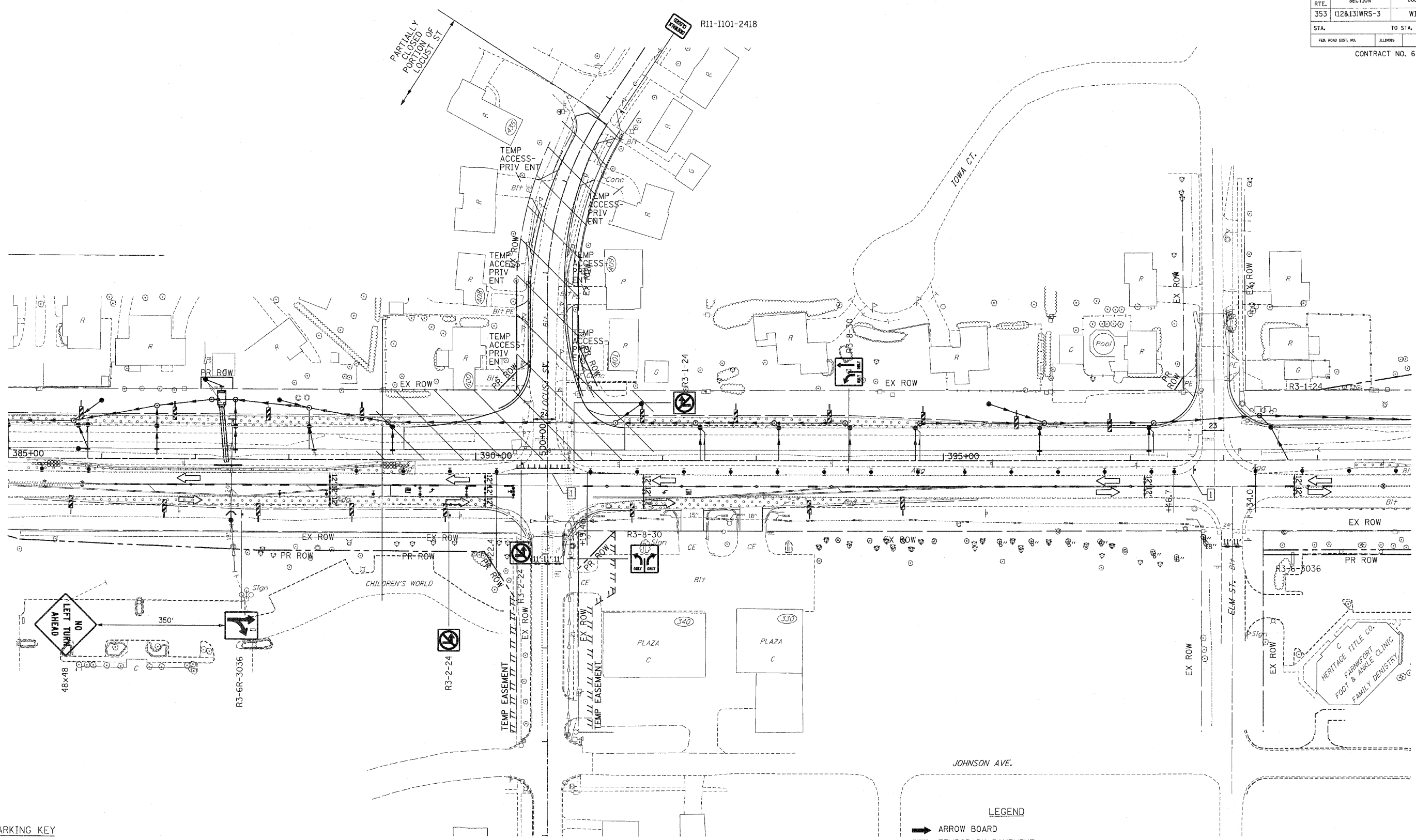


F.A.P. RTE.	SECTION	COUNTY	TOTAL SHEETS	SHEET NO.
353	(12&13)WRS-3	WILL	1235	149
STA.		TO STA.		
FED. ROAD DIST. NO.	ALIGNMENT	FED. AID PROJECT		
CONTRACT NO. 62479				



PAVEMENT MARKING KEY

- 1 4" SOLID - WHITE
- 2 12" SOLID - YELLOW
- 3 4" SOLID - YELLOW @ 11" o-c
- 4 24" STOP BAR - WHITE
- 5 12" SOLID - WHITE
- 6 6" SOLID - WHITE
- 7 6"-6 1/2' DASH-WHITE
- 8 4" SOLID - YELLOW
- 9 4" 30'/10' DASH WHITE

LEGEND

- ➔ ARROW BOARD
- ▨ TEMPORARY PAVEMENT
- ▩ TEMPORARY PAVEMENT CONSTRUCTED IN EARLIER STAGE
- ▭ CONSTRUCTION ZONE
- ⊥ TYPE III BARRICADE WITH FLASHING LIGHTS
- ⊥ TYPE II BARRICADE
- ⊥ DRUM OR VERTICAL BARRICADE
- ➔ DIRECTION INDICATOR BARRICADE WITH STEADY BURN MONODIRECTIONAL LIGHT
- ⊥ FL FLASHING LIGHT

REVISIONS	
NAME	DATE

ILLINOIS DEPARTMENT OF TRANSPORTATION
MAINTENANCE OF TRAFFIC
 STAGE 1A
 U.S. RTE. 30 (LINCOLN HIGHWAY)
 AT LOCUST ST.
 SCALE : 1" = 50'
 DATE : 10/12/2010
 DRAWN BY : BAE
 CHECKED BY : GB