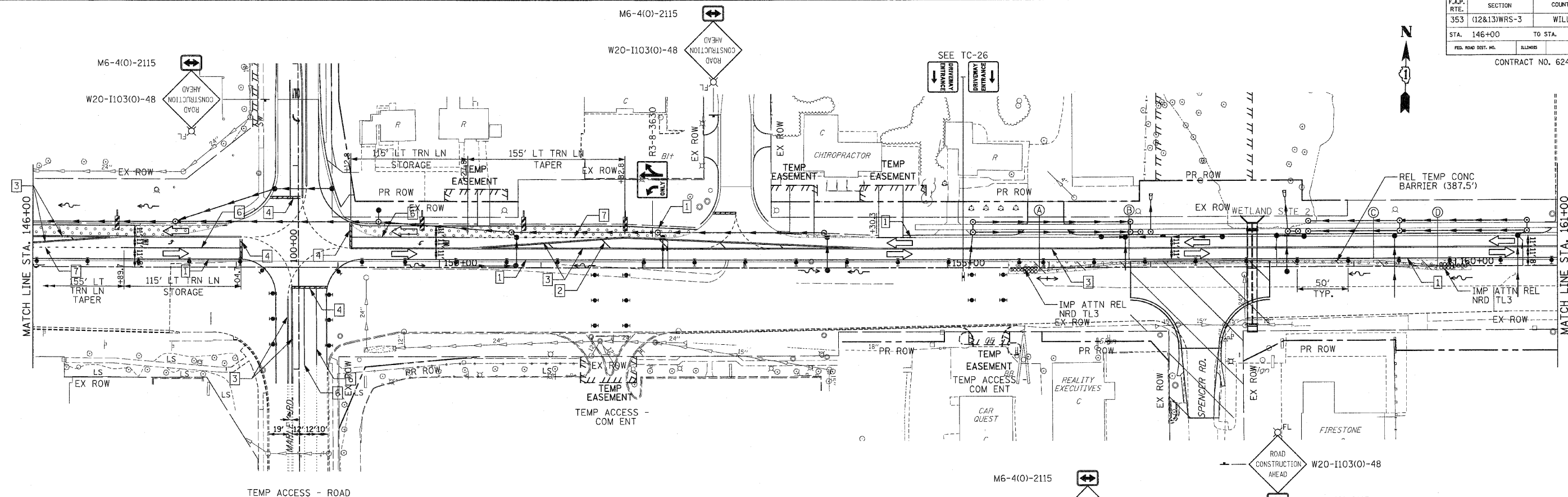
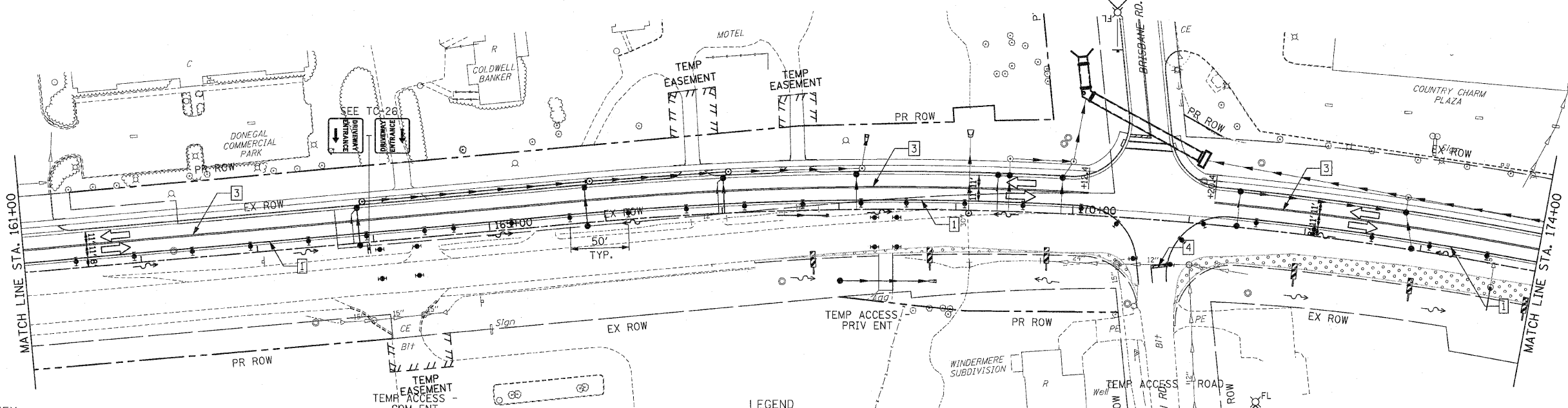


F.A.P. RTE.	SECTION	COUNTY	TOTAL SHEETS	SHEET NO.
353	(12&13)WRS-3	WILL	1235	152
STA. 146+00	TO STA. 174+00			
FED. ROAD DIST. NO.	ILLINOIS	FED. AID PROJECT		

CONTRACT NO. 62479



TEMP ACCESS - ROAD



PAVEMENT MARKING KEY

- 1 4" SOLID - WHITE
- 2 12" SOLID - YELLOW
- 3 4" SOLID - YELLOW @ 11" C-C
- 4 24" STOP BAR - WHITE
- 5 12" SOLID - WHITE
- 6 6" SOLID - WHITE
- 7 6"-6'/2" DASH-WHITE
- 8 4" SOLID - YELLOW
- 9 4" 30'/10" DASH WHITE

TEMPORARY CONCRETE BARRIER LAYOUT (TO FF)

LOCATION	STATION	OFFSET
A	155+90.35	1.36' RT
B	156+78.71	6.00' LT
C	159+19.21	6.00' LT
D	159+82.32	0.74' RT

LEGEND

- ARROW BOARD
- TEMPORARY PAVEMENT
- TEMPORARY PAVEMENT CONSTRUCTED IN EARLIER STAGE
- CONSTRUCTION ZONE
- TYPE III BARRICADE WITH FLASHING LIGHTS
- TYPE II BARRICADE
- DRUM OR VERTICAL BARRICADE
- DIRECTION INDICATOR BARRICADE WITH STEADY BURN MONODIRECTIONAL LIGHT
- FLASHING LIGHT

REVISIONS		ILLINOIS DEPARTMENT OF TRANSPORTATION MAINTENANCE OF TRAFFIC PRE-STAGE 2 U.S. RTE. 30 (LINCOLN HIGHWAY) STA. 146+00 TO STA. 174+00 SCALE: 1" = 50' DRAWN BY: BAE DATE: 10/12/2010 CHECKED BY: GB
NAME	DATE	