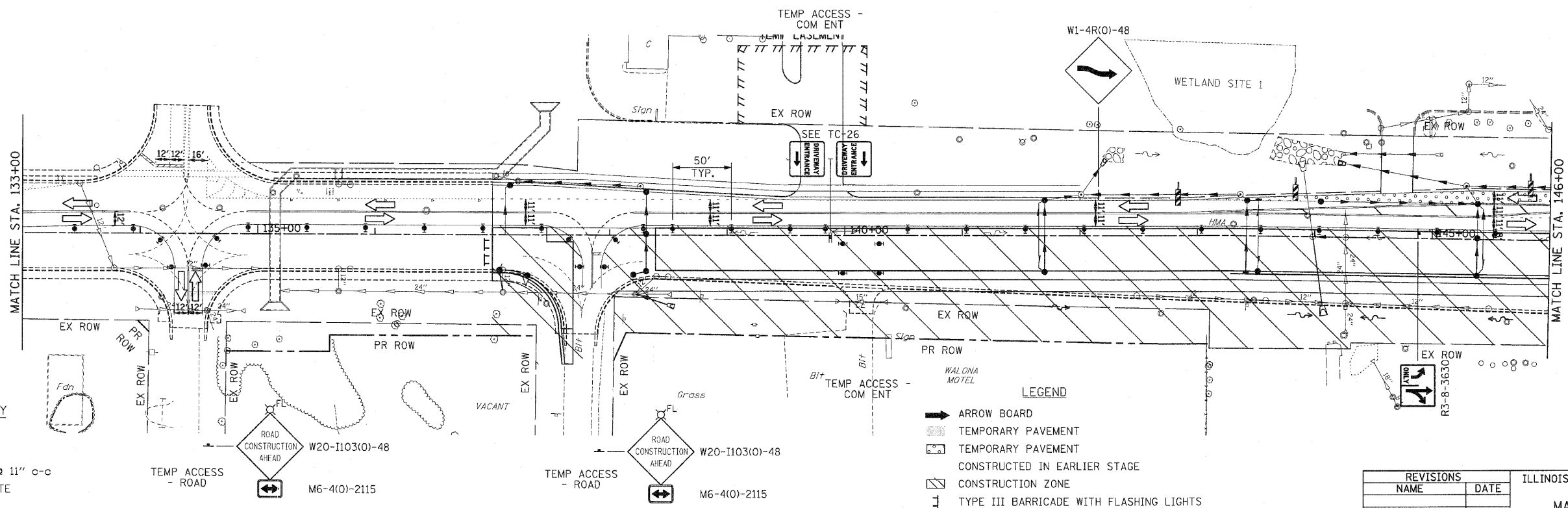
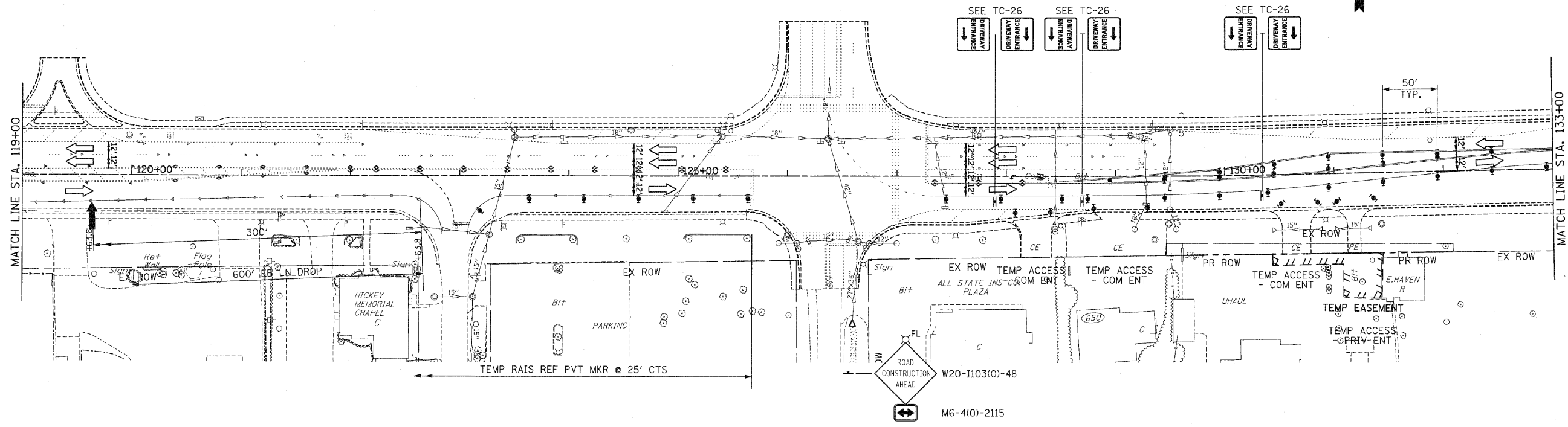


F.A.P. RTE.	SECTION	COUNTY	TOTAL SHEETS	SHEET NO.
353	(12&13)WRS-3	WILL	1235	163
STA. 118+00	TO STA. 146+00			
FED. ROAD DIST. NO.	ALLOYS	FED. AID PROJECT		
CONTRACT NO. 62479				



PAVEMENT MARKING KEY

1	4" SOLID - WHITE
2	12" SOLID - YELLOW
3	4" SOLID - YELLOW @ 11" C-C
4	24" STOP BAR - WHITE
5	12" SOLID - WHITE
6	6" SOLID - WHITE
7	6"-6'/2' DASH-WHITE
8	4" SOLID - YELLOW
9	4" 30'/10' DASH WHITE

LEGEND

- ➔ ARROW BOARD
- ▨ TEMPORARY PAVEMENT
- ▨ TEMPORARY PAVEMENT CONSTRUCTED IN EARLIER STAGE
- ▨ CONSTRUCTION ZONE
- ⊥ TYPE III BARRICADE WITH FLASHING LIGHTS
- ⊥ TYPE II BARRICADE
- ⊥ DRUM OR VERTICAL BARRICADE
- ➔ DIRECTION INDICATOR BARRICADE WITH STEADY BURN MONODIRECTIONAL LIGHT
- ⊥ FL FLASHING LIGHT

REVISIONS	
NAME	DATE

ILLINOIS DEPARTMENT OF TRANSPORTATION
MAINTENANCE OF TRAFFIC
 STAGE 2
 U.S. RTE. 30 (LINCOLN HIGHWAY)
 STA. 118+00 TO STA. 146+00
 SCALE : 1" = 50'
 DATE : / /
 DRAWN BY : BAE
 CHECKED BY : GB