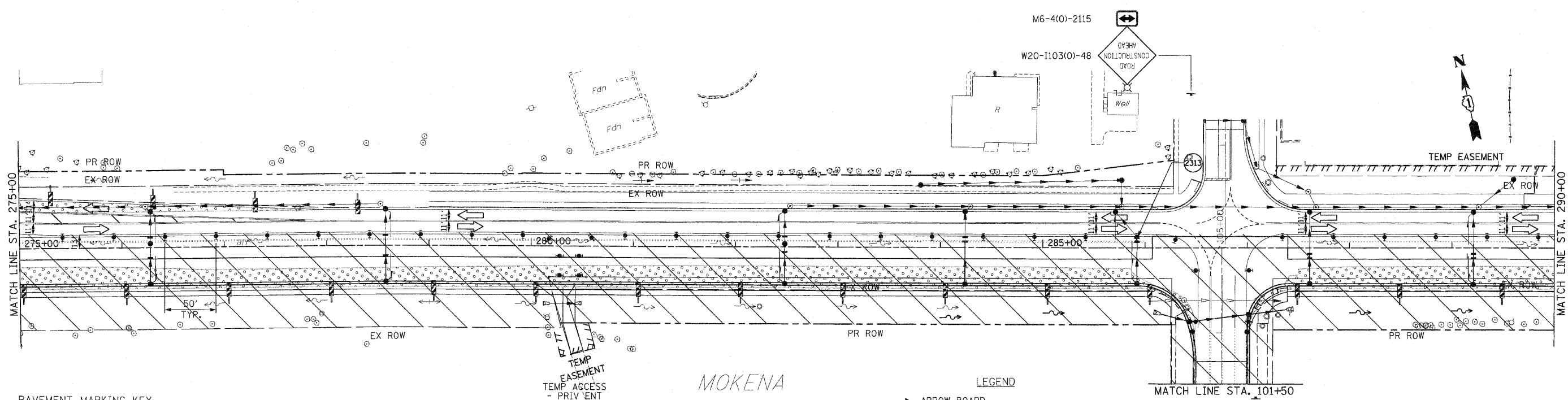
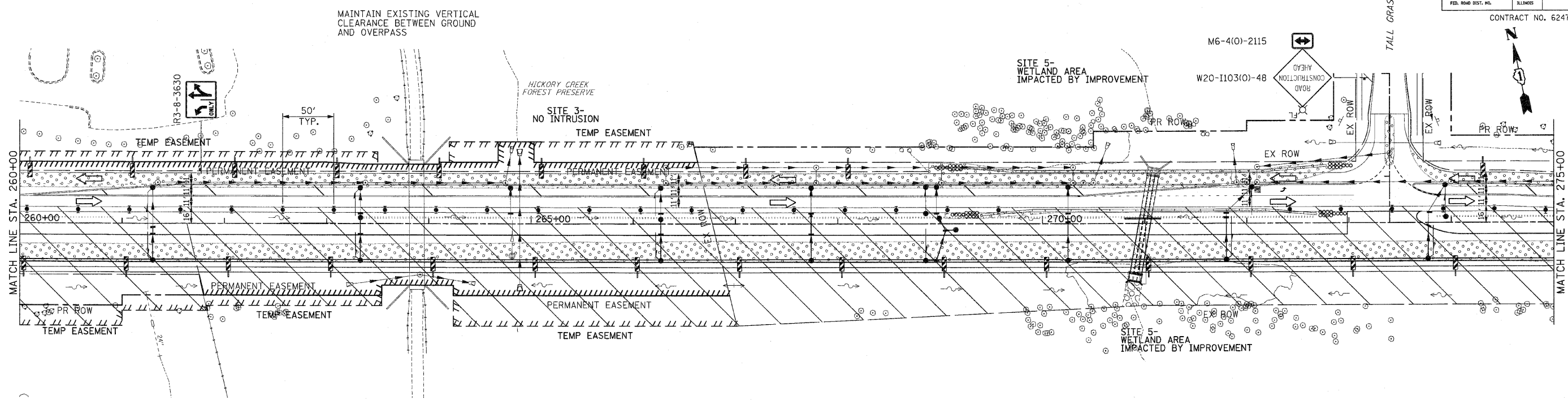


F.A.P. RTE.	SECTION	COUNTY	TOTAL SHEETS	SHEET NO.
353	(12&13)WRS-3	WILL	1235	168
STA. 260+00		TO STA. 290+00		
FID. ROAD DIST. NO.		ILLINOIS		FED. AID PROJECT
CONTRACT NO. 62479				



PAVEMENT MARKING KEY

- 1 4" SOLID - WHITE
- 2 12" SOLID - YELLOW
- 3 4" SOLID - YELLOW @ 11" c-c
- 4 24" STOP BAR - WHITE
- 5 12" SOLID - WHITE
- 6 6" SOLID - WHITE
- 7 6"-6'/2' DASH-WHITE
- 8 4" SOLID - YELLOW
- 9 4" 30'/10' DASH WHITE

- LEGEND**
- ➔ ARROW BOARD
 - ▨ TEMPORARY PAVEMENT
 - ▨ TEMPORARY PAVEMENT CONSTRUCTED IN EARLIER STAGE
 - ▨ CONSTRUCTION ZONE
 - ⌈ TYPE III BARRICADE WITH FLASHING LIGHTS
 - ⌋ TYPE II BARRICADE
 - ⊥ DRUM OR VERTICAL BARRICADE
 - ➔ DIRECTION INDICATOR BARRICADE WITH STEADY BURN MONODIRECTIONAL LIGHT
 - ⊗ FL FLASHING LIGHT

REVISIONS	
NAME	DATE

ILLINOIS DEPARTMENT OF TRANSPORTATION
MAINTENANCE OF TRAFFIC
 STAGE 2
 U.S. RTE. 30 (LINCOLN HIGHWAY)
 STA. 260+00 TO STA. 290+00
 SCALE : 1" = 50'
 DATE : / /
 DRAWN BY : BAE
 CHECKED BY : GB