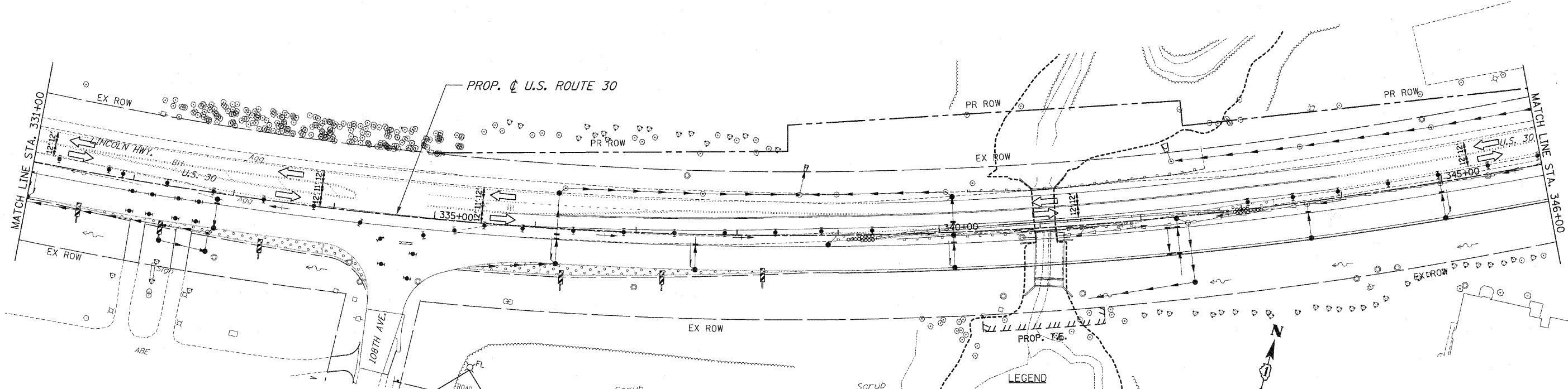
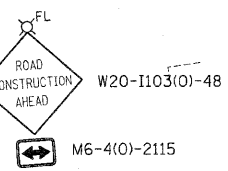
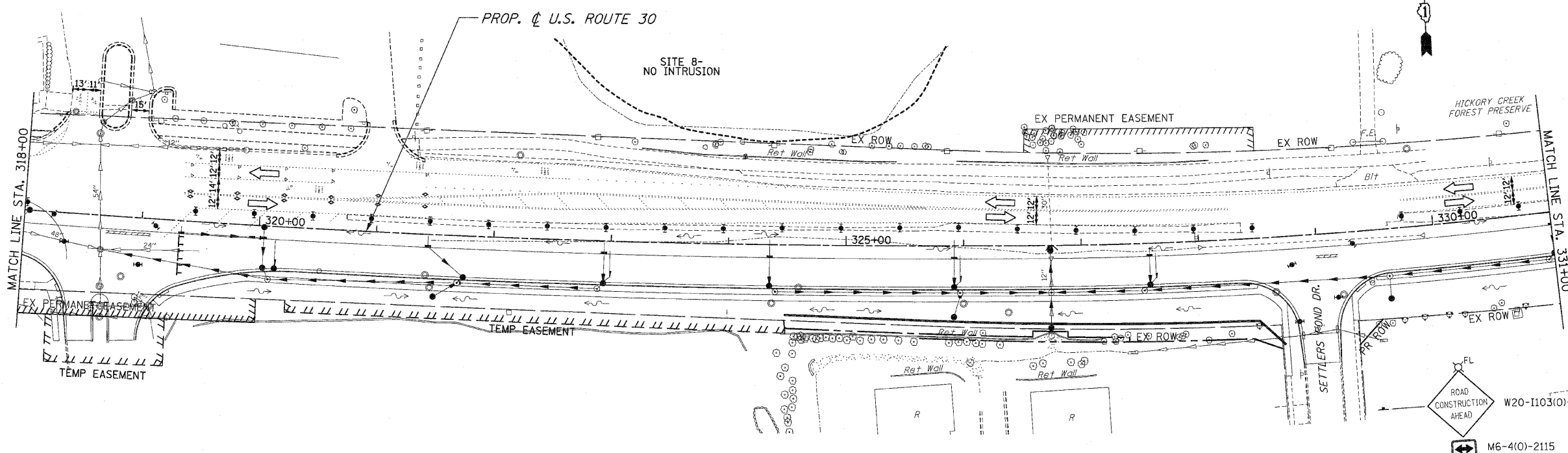
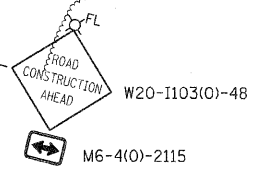


F.A.P. RTE.	SECTION	COUNTY	TOTAL SHEETS	SHEET NO.
353	(12&13)WRS-3	WILL	1235	170
STA. 318+00		TO STA. 346+00		
FED. ROAD DIST. NO.	ILLINOIS	FED. AID PROJECT		
CONTRACT NO. 62479				



- PAVEMENT MARKING KEY**
- 1 4" SOLID - WHITE
  - 2 12" SOLID - YELLOW
  - 3 4" SOLID - YELLOW @ 11" c-c
  - 4 24" STOP BAR - WHITE
  - 5 12" SOLID - WHITE
  - 6 6" SOLID - WHITE
  - 7 6"-6'/2" DASH-WHITE
  - 8 4" SOLID - YELLOW
  - 9 4" 30'/10' DASH WHITE

- LEGEND**
- ARROW BOARD
  - TEMPORARY PAVEMENT
  - TEMPORARY PAVEMENT CONSTRUCTED IN EARLIER STAGE
  - CONSTRUCTION ZONE
  - TYPE III BARRICADE WITH FLASHING LIGHTS
  - TYPE II BARRICADE
  - DRUM OR VERTICAL BARRICADE
  - DIRECTION INDICATOR BARRICADE WITH STEADY BURN MONODIRECTIONAL LIGHT
  - FLASHING LIGHT



REVISIONS	
NAME	DATE

ILLINOIS DEPARTMENT OF TRANSPORTATION  
**MAINTENANCE OF TRAFFIC**  
 STAGE 2  
 U.S. RTE. 30 (LINCOLN HIGHWAY)  
 STA. 318+00 TO STA. 346+00  
 SCALE : 1" = 50' DRAWN BY : BAE  
 DATE : 10/12/2010 CHECKED BY : GB