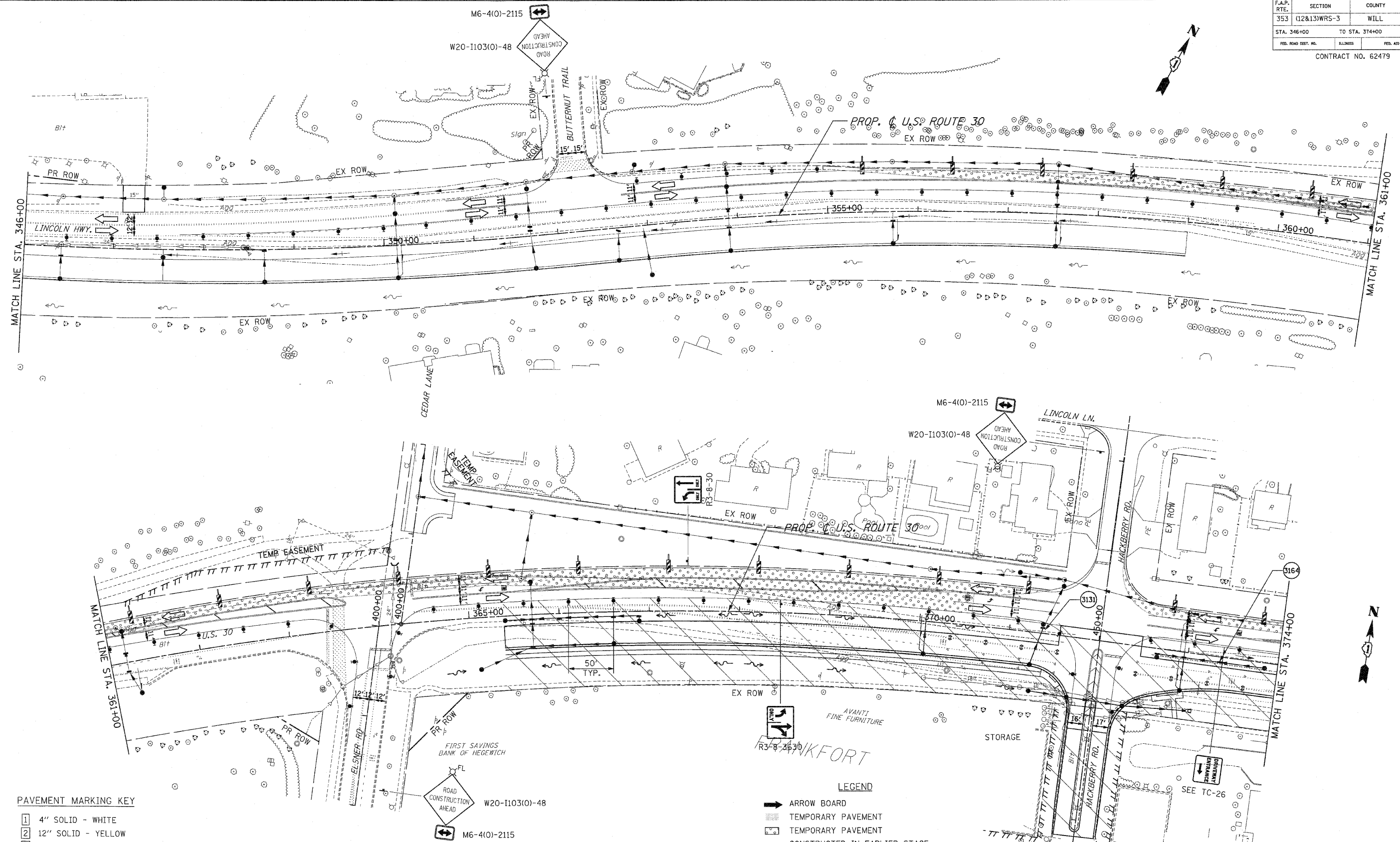


F.A.P. RTE.	SECTION	COUNTY	TOTAL SHEETS	SHEET NO
353	(12&13)WRS-3	WILL	1235	171
STA. 346+00		TO STA. 374+00		
FED. ROAD DIST. NO.	ILLINOIS	FED. AID PROJECT		
CONTRACT NO. 62479				



**PAVEMENT MARKING KEY**

1	4" SOLID - WHITE
2	12" SOLID - YELLOW
3	4" SOLID - YELLOW @ 11" C-C
4	24" STOP BAR - WHITE
5	12" SOLID - WHITE
6	6" SOLID - WHITE
7	6"-6 1/2" DASH-WHITE
8	4" SOLID - YELLOW
9	4" 30'/10' DASH WHITE

**LEGEND**

[Symbol]	ARROW BOARD
[Symbol]	TEMPORARY PAVEMENT
[Symbol]	TEMPORARY PAVEMENT CONSTRUCTED IN EARLIER STAGE
[Symbol]	CONSTRUCTION ZONE
[Symbol]	TYPE III BARRICADE WITH FLASHING LIGHTS
[Symbol]	TYPE II BARRICADE
[Symbol]	DRUM OR VERTICAL BARRICADE
[Symbol]	DIRECTION INDICATOR BARRICADE WITH STEADY BURN MONODIRECTIONAL LIGHT
[Symbol]	FLASHING LIGHT

**REVISIONS**

NAME	DATE

ILLINOIS DEPARTMENT OF TRANSPORTATION  
**MAINTENANCE OF TRAFFIC**  
**STAGE 2**  
**U.S. RTE. 30 (LINCOLN HIGHWAY)**  
 STA. 346+00 TO STA. 374+00  
 SCALE : 1" = 50'  
 DATE : / /  
 DRAWN BY : BAE  
 CHECKED BY : GB