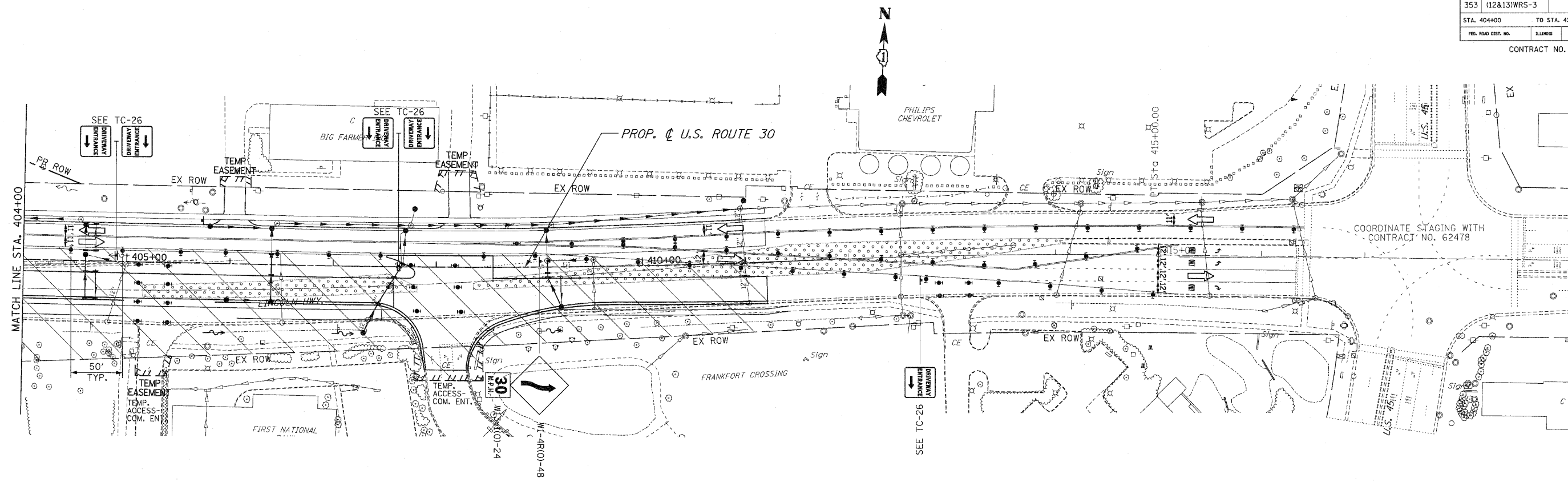


F.A.P. RTE.	SECTION	COUNTY	TOTAL SHEETS	SHEET NO.
353	(12&13)WRS-3	WILL	1235	173
STA. 404+00		TO STA. 434+00		
FED. ROAD DIST. NO.	ILLINOIS	FED. AID PROJECT		

CONTRACT NO. 62479



STAGE 2 TEMPORARY STRUCTURE TABLE

STR. #	STATION	OFFSET	STRUCTURE		RIM ELEV	INVERT ELEVATION			
			TYPE	FRAME		NORTH	EAST	SOUTH	WEST
T65	180+02	0	CB	C	689.50	686.29			
1052	*	*	*	*	703.50				
1600	*	*	*	*	728.10				
1624	*	*	*	*	727.00				
2313	*	*	*	*	713.30				
3164	*	*	*	*	731.60				
3131	*	*	*	*	737.50				

* SEE DRAINAGE PLANS FOR THIS INFORMATION

PAVEMENT MARKING KEY

- 1 4" SOLID - WHITE
- 2 12" SOLID - YELLOW
- 3 4" SOLID - YELLOW @ 11" c-c
- 4 24" STOP BAR - WHITE
- 5 12" SOLID - WHITE
- 6 6" SOLID - WHITE
- 7 6"-6 1/2" DASH-WHITE
- 8 4" SOLID YELLOW
- 9 4" 30'/10' DASH WHITE

LEGEND

- ➔ ARROW BOARD
- ▨ TEMPORARY PAVEMENT
- ▤ TEMPORARY PAVEMENT CONSTRUCTED IN EARLIER STAGE
- ▩ CONSTRUCTION ZONE
- ⌈ TYPE III BARRICADE WITH FLASHING LIGHTS
- ⌋ TYPE II BARRICADE
- ⊙ DRUM OR VERTICAL BARRICADE
- ➔ DIRECTION INDICATOR BARRICADE WITH STEADY BURN MONODIRECTIONAL LIGHT
- ⊗ FL ASHING LIGHT

REVISIONS		ILLINOIS DEPARTMENT OF TRANSPORTATION
NAME	DATE	
		MAINTENANCE OF TRAFFIC STAGE 2 U.S. RTE. 30 (LINCOLN HIGHWAY) STA. 404+00 TO STA. 434+00 SCALE : 1" = 50' DATE : / / DRAWN BY : BAE CHECKED BY : GB