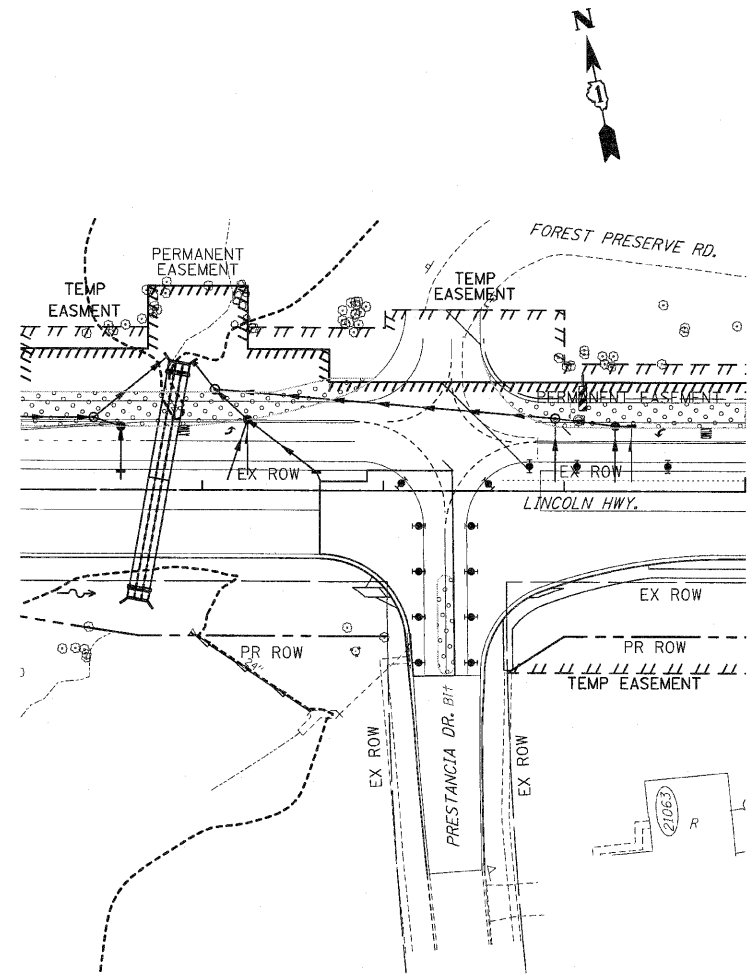
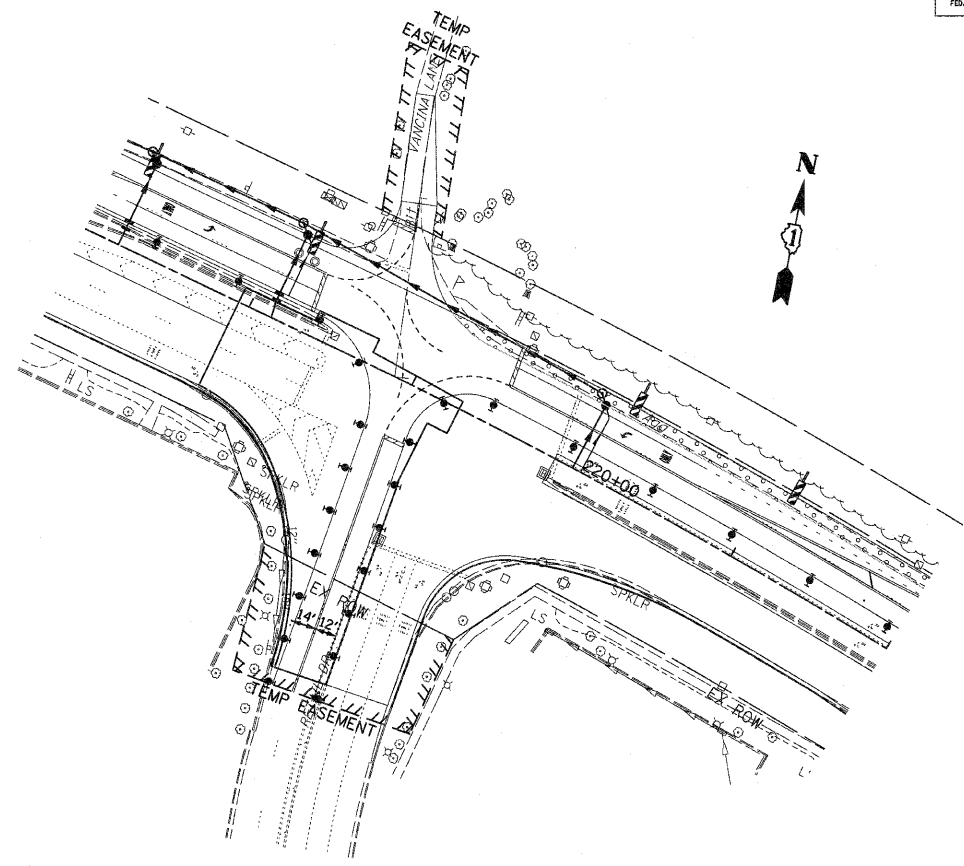


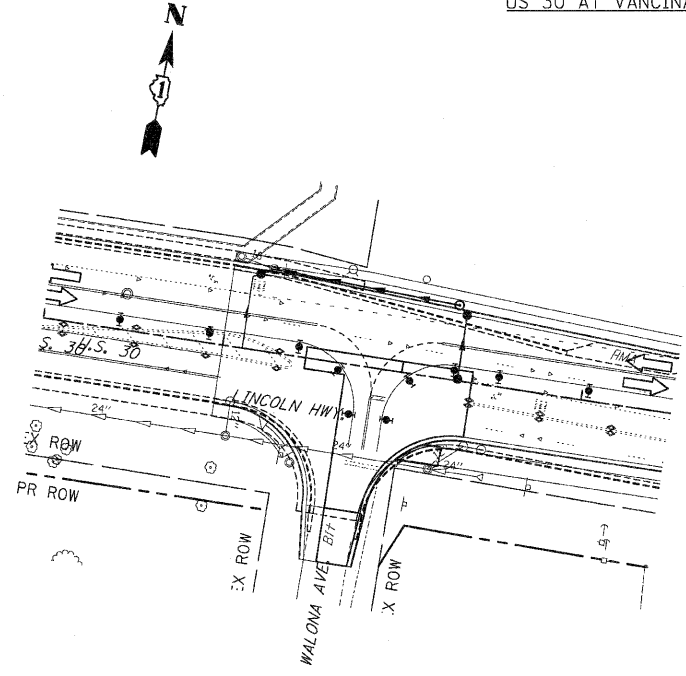
F.A.P. RTE.	SECTION	COUNTY	TOTAL SHEETS	SHEET NO.
353	(12&13)WRS-3	WILL	1235	176
STA. 202+00		TO STA. 230+00		
FED. ROAD DIST. NO.	ILLINOIS	FED. AID PROJECT		
CONTRACT NO. 62479				



US 30 AT PRESTANCIA DR.



US 30 AT VANCINA LN.



US 30 AT WALONA AVE.

PAVEMENT MARKING KEY

- 1 4" SOLID - WHITE
- 2 12" SOLID - YELLOW
- 3 4" SOLID - YELLOW @ 11" c-c
- 4 24" STOP BAR - WHITE
- 5 12" SOLID - WHITE
- 6 6" SOLID - WHITE
- 7 6"-6 1/2' DASH-WHITE
- 8 4" SOLID - YELLOW
- 9 4" 30'/10' DASH WHITE

LEGEND

- ➔ ARROW BOARD
- ▨ TEMPORARY PAVEMENT
- ▨ TEMPORARY PAVEMENT CONSTRUCTED IN EARLIER STAGE
- ▨ CONSTRUCTION ZONE
- ⊥ TYPE III BARRICADE WITH FLASHING LIGHTS
- ⊥ TYPE II BARRICADE
- ⊥ DRUM OR VERTICAL BARRICADE
- ➔ DIRECTION INDICATOR BARRICADE WITH STEADY BURN MONODIRECTIONAL LIGHT
- ⊥ FL FLASHING LIGHT

REVISIONS	
NAME	DATE

ILLINOIS DEPARTMENT OF TRANSPORTATION  
**MAINTENANCE OF TRAFFIC**  
 STAGE 2A  
 U.S. RTE. 30 (LINCOLN HIGHWAY)  
 AT PRESTANCIA DR., VANCINA LN., WALONA AVE  
 SCALE : 1" = 50'  
 DATE : / /  
 DRAWN BY : BAE  
 CHECKED BY : GB