

F.A.P. RTE.	SECTION	COUNTY	TOTAL SHEETS	SHEET NO
353	(12&13)WRS-3	WILL	1235	177
STA. 396+00		TO STA. 400+00		
FED. ROAD DIST. NO.	ILLINOIS	FED. AID PROJECT		

CONTRACT NO. 62479

STAGE 2A CONSTRUCTION

CONSTRUCT ELSNER UP TO THE BOTTOM OF THE SURFACE COURSE.

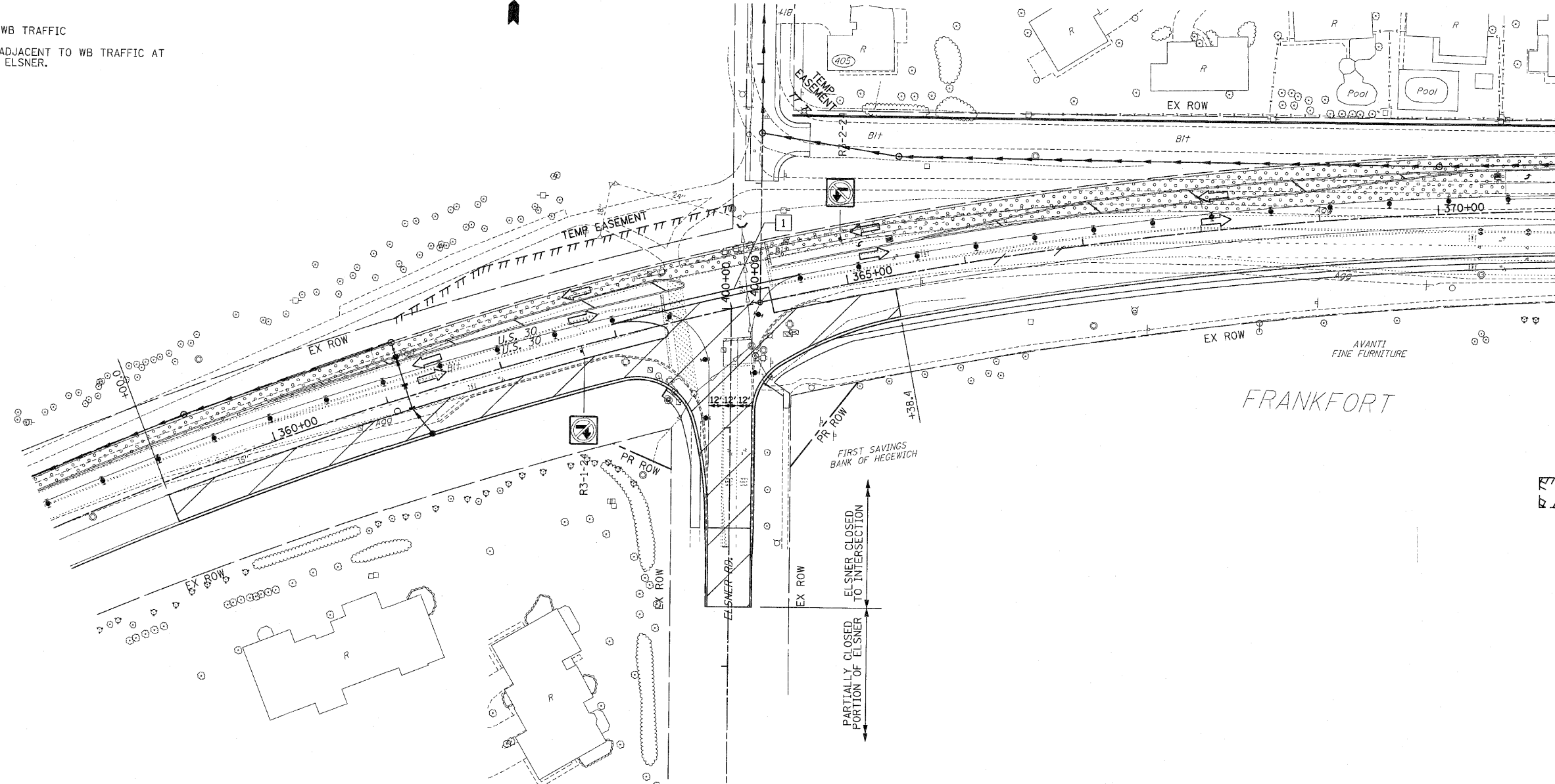
CONSTRUCT TEMPORARY PAVEMENT AND TEMPORARY AGGREGATE SHOULDERS IN MEDIAN OF US ROUTE 30.

STAGE 2A TRAFFIC

DETOUR ELSNER RD.

MAINTAIN STAGE 2 WB TRAFFIC

SHIFT EB TRAFFIC ADJACENT TO WB TRAFFIC AT INTERSECTION WITH ELSNER.



PAVEMENT MARKING KEY

- 1 4" SOLID - WHITE
- 2 12" SOLID - YELLOW
- 3 4" SOLID - YELLOW @ 11" C-C
- 4 24" STOP BAR - WHITE
- 5 12" SOLID - WHITE
- 6 6" SOLID - WHITE
- 7 6"-6'/2" DASH-WHITE
- 8 4" SOLID YELLOW
- 9 4" 30'/10' DASH WHITE

LEGEND

- ➔ ARROW BOARD
- ▨ TEMPORARY PAVEMENT
- ▩ TEMPORARY PAVEMENT CONSTRUCTED IN EARLIER STAGE
- ▧ CONSTRUCTION ZONE
- 1 TYPE III BARRICADE WITH FLASHING LIGHTS
- 2 TYPE II BARRICADE
- 3 DRUM OR VERTICAL BARRICADE
- ➔ DIRECTION INDICATOR BARRICADE WITH STEADY BURN MONODIRECTIONAL LIGHT
- ⊗ FL ASHING LIGHT

REVISIONS	
NAME	DATE

ILLINOIS DEPARTMENT OF TRANSPORTATION
MAINTENANCE OF TRAFFIC
 STAGE 2A
 U.S. RTE. 30 (LINCOLN HIGHWAY)
 ELSNER RD.
 SCALE : 1" = 50'
 DATE : / /
 DRAWN BY : BAE
 CHECKED BY : GB